

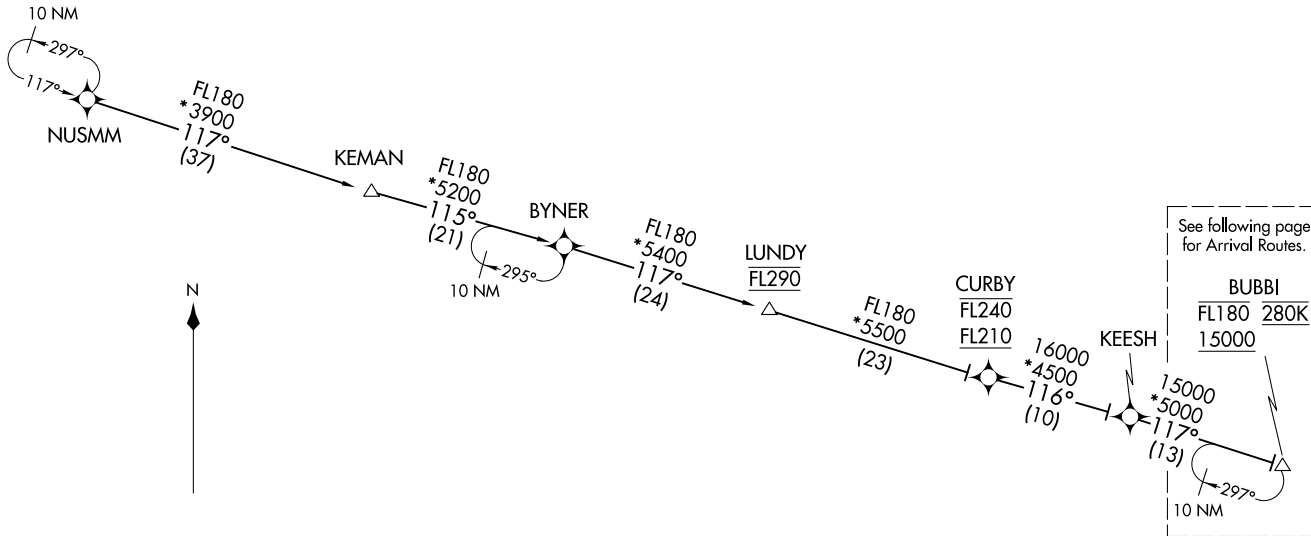
ANTHM THREE ARRIVAL (RNAV) (BUBBI.ANTHM3) 31MART6

Transition Routes

BALTIMORE, MARYLAND

POTOMAC APP CON
133.85 254.25
BWI D-ATIS
115.1 127.8

- NOTE: RADAR required
- NOTE: RNAV 1.
- NOTE: DME/DME/IRU or GPS required.
- NOTE: Turbojet aircraft only.
- NOTE: Prohibited area (P56) 1.5 NM north of DCA avoid surface to 18000 MSL.
- NOTE: ARTCC will issue landing direction assignment (east or west). Potomac TRACON will issue runway assignments.



KEESH TRANSITION (KEESH.ANTHM3)
 KEMAN TRANSITION (KEMAN.ANTHM3)
 NUSMM TRANSITION (NUSMM.ANTHM3)

(CONTINUED ON FOLLOWING PAGES)

NOTE: Chart not to scale.

(BUBBI.ANTHM3) 20198
ANTHM THREE ARRIVAL (RNAV)

Transition Routes

BALTIMORE, MARYLAND

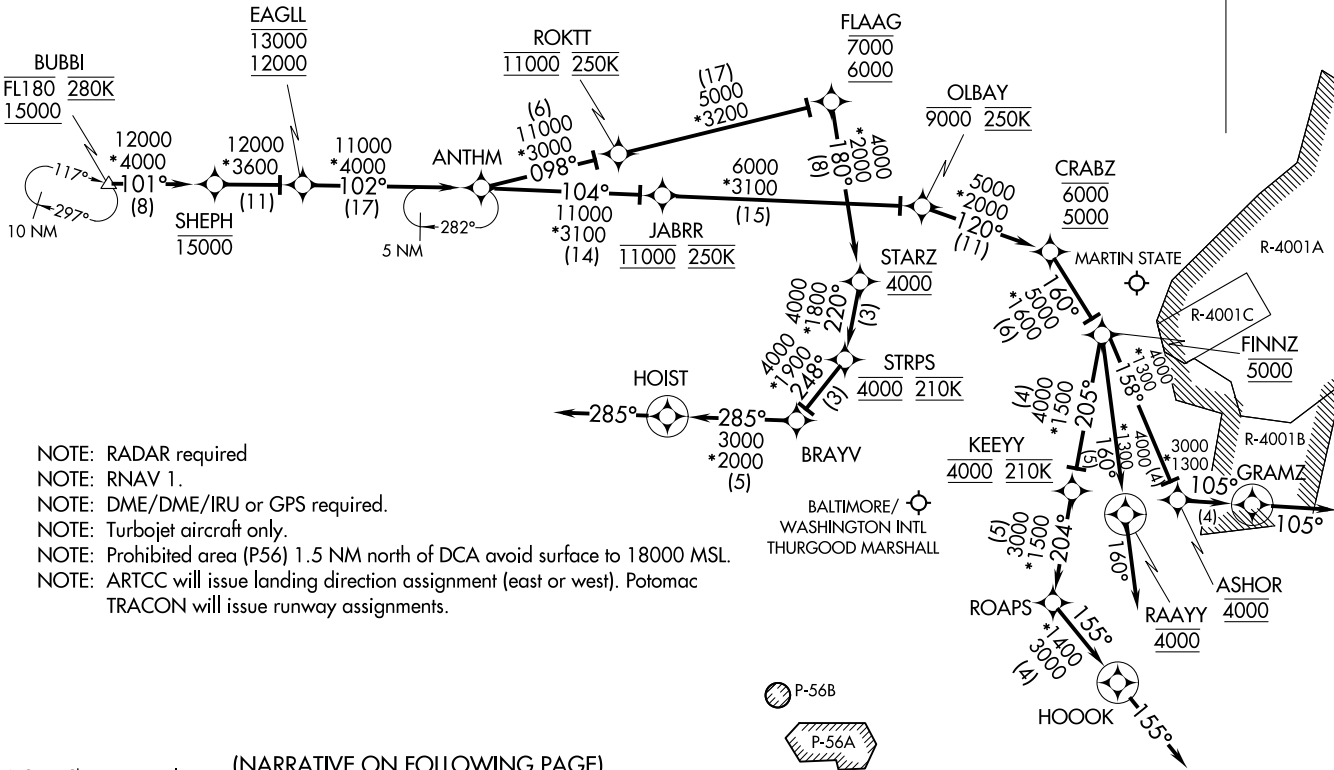
AL-804 (FAA)

ANTHM THREE ARRIVAL (RNAV) (BUBBI,ANTHM3) 31MARI6

Arrival Routes

BALTIMORE, MARYLAND

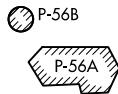
POTOMAC APP CON
133.85 254.25
BWI D-ATIS
115.1 127.8



- NOTE: RADAR required
- NOTE: RNAV 1.
- NOTE: DME/DME/IRU or GPS required.
- NOTE: Turbojet aircraft only.
- NOTE: Prohibited area (P56) 1.5 NM north of DCA avoid surface to 18000 MSL.
- NOTE: ARTCC will issue landing direction assignment (east or west). Potomac TRACON will issue runway assignments.

(NARRATIVE ON FOLLOWING PAGE)

NOTE: Chart not to scale.



ANTHM THREE ARRIVAL (RNAV) (BUBBI,ANTHM3) 20199

Arrival Routes

BALTIMORE, MARYLAND

AL-804 (FAA)

ANTHM THREE ARRIVAL (RNAV)

ARRIVAL ROUTE DESCRIPTION

Landing BWI:

From BUBBI on track 101° to cross SHEPH at or below 15000, then on track 101° to cross EAGLL between 12000 and 13000, then on track 102° to cross ANTHM.

LANDING EAST: RWYS 10 and 15L/R: From ANTHM on track 098° to cross ROKTT at 11000 and at 250K, then on track 098° to cross FLAAG between 6000 and 7000, then on track 180° to cross STARZ at 4000, then on track 220° to cross STRPS at 4000 and at 210K, then on track 248° to BRAYV, then on track 285° to HOIST, then on heading 285° or as assigned by ATC.

Expect RADAR vectors to final approach course.

LANDING WEST: RWY 28: From ANTHM on track 104° to cross JABRR at 11000 and at 250K, then on track 104° to cross OLBAY at or below 9000 and at 250K, then on track 120° to cross CRABZ between 5000 and 6000, then on track 160° to cross FINNZ at 5000, then on track 158° to cross ASHOR at 4000, then on track 105° to GRAMZ, then on heading 105°.

Expect RADAR vectors to final approach course.

LANDING WEST: RWYS 33L/R: From ANTHM on track 104° to cross JABRR at 11000 and at 250K, then on track 104° to cross OLBAY at or below 9000 and at 250K, then on track 120° to cross CRABZ between 5000 and 6000, then on track 160° to cross FINNZ at 5000, then on track 205° to cross KEEYY at 4000 and at 210K, then on track 204° to ROAPS, then on track 155° to HOOOK, then on heading 155°.

Expect RADAR vectors to final approach course.

LANDING MTN: From BUBBI on track 101° to cross SHEPH at or below 15000, then on track 101° to cross EAGLL between 12000 and 13000, then on track 102° to ANTHM, then on track 104° to cross JABRR at 11000 and at 250K, then on track 104° to cross OLBAY at or below 9000 and at 250K, then on track 120° to cross CRABZ between 5000 and 6000, then on track 160° to cross FINNZ at 5000, then on track 160° to cross RAAYY at 4000, then on heading 160°.

Expect RADAR vectors to final approach course.

NE-3, 07 OCT 2021 to 04 NOV 2021

NE-3, 07 OCT 2021 to 04 NOV 2021