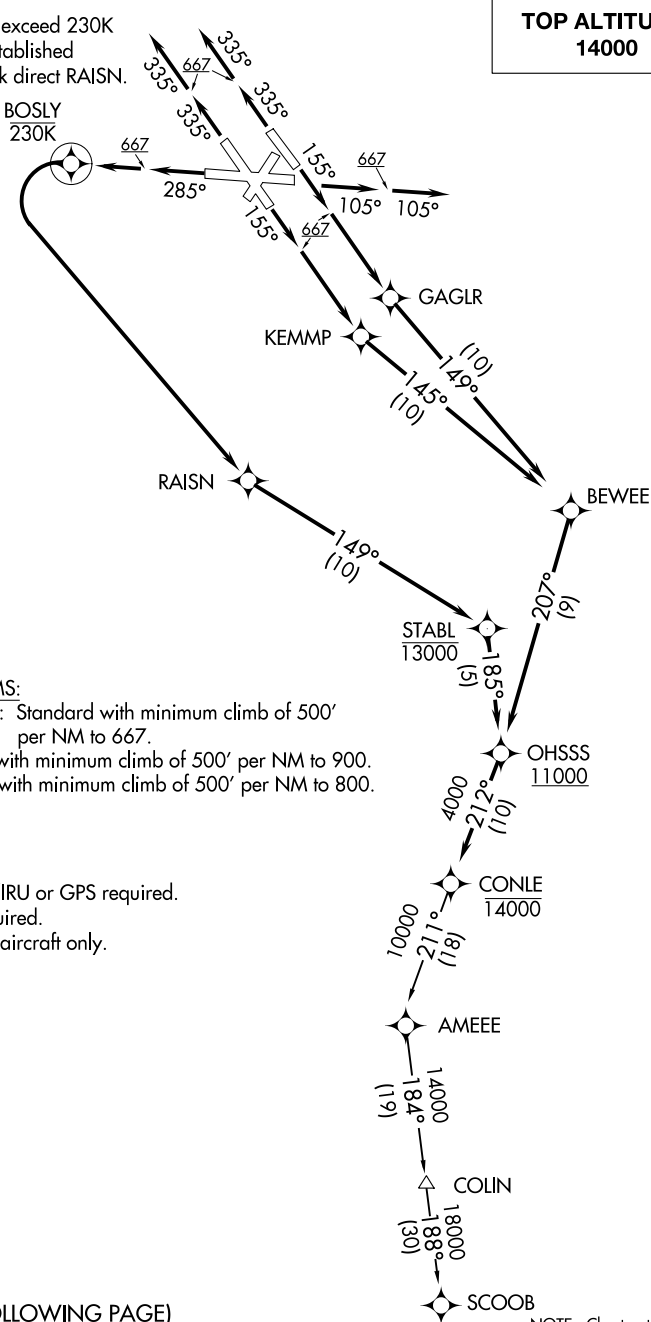


CONLE FOUR DEPARTURE (RNAV)

D-ATIS
 115.1 127.8
 CLNC DEL
 118.05
 CPDLC
 GND CON
 121.9
 BALTIMORE TOWER
 119.4 257.8
 POTOMAC DEP CON
 124.55 317.425

Do not exceed 230K
 until established
 on track direct RAISN.

**TOP ALTITUDE:
 14000**



TAKEOFF MINIMUMS:

Rwys 10, 15L/R, 28: Standard with minimum climb of 500' per NM to 667.

Rwy 33L: Standard with minimum climb of 500' per NM to 900.

Rwy 33R: Standard with minimum climb of 500' per NM to 800.

NOTE: RNAV 1

NOTE: DME/DME/IRU or GPS required.

NOTE: RADAR required.

NOTE: For turbojet aircraft only.

(NARRATIVE ON FOLLOWING PAGE)

NOTE: Chart not to scale.

NE-3, 07 OCT 2021 to 04 NOV 2021

NE-3, 07 OCT 2021 to 04 NOV 2021

CONLE FOUR DEPARTURE (RNAV)

DEPARTURE ROUTE DESCRIPTION

TAKEOFF RWY 10: Climb on heading 105° to 667, then on heading 105° or as assigned by ATC, for vectors to cross OHSSS at or above 11000....

TAKEOFF RWY 15L: Climb on heading 155° to 667, then direct GAGLR, then on track 149° to BEWEE, then on track 207° to cross OHSSS at or above 11000....

TAKEOFF RWY 15R: Climb on heading 155° to 667, then direct KEMMP, then on track 145° to BEWEE, then on track 207° to cross OHSSS at or above 11000....

TAKEOFF RWY 28: Climb on heading 285° to 667, then climb direct BOSLY, then left turn direct RAISN, then on track 149° to cross STABL at or below 13000, then on track 185° to cross OHSSS at or above 11000....

TAKEOFF RWYS 33L/R: Climb on heading 335° to 667, then on heading 335° or as assigned bt ATC, for vectors to cross OHSSS at or above 11000....

....then on track 212° to cross CONLE at or below 14000. Then on assigned transition. Maintain 14000. Expect clearance to filed altitude within 10 minutes after departure.

COLIN TRANSITION (CONLE4.COLIN)

SCOOB TRANSITION (CONLE4.SCOOB)

NE-3, 07 OCT 2021 to 04 NOV 2021

NE-3, 07 OCT 2021 to 04 NOV 2021