

FIXET THREE DEPARTURE (RNAV)
(FIXET3, FIXET) 26MAR20
BALTIMORE/
WASHINGTON INTL THURGOOD MARSHALL (BWTI)
BALTIMORE, MARYLAND

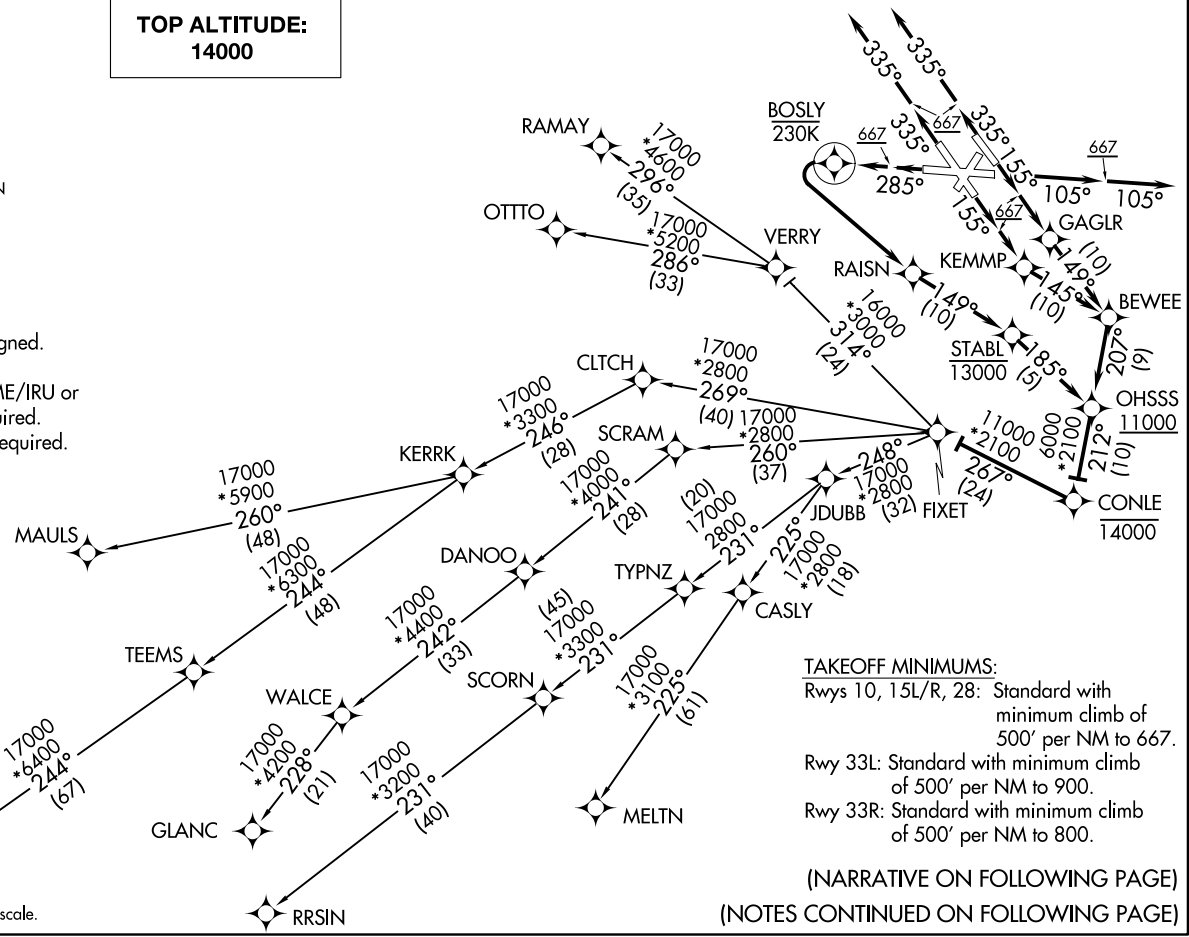
D-ATIS
115.1 127.8
CLNC DEL
118.05
CPDLC
GND CON
121.9
BALTIMORE TOWER
119.4 257.8
POTOMAC DEP CON
124.55 317.425

**TOP ALTITUDE:
14000**

NOTE: ATC assigned.
NOTE: RNAV 1.
NOTE: DME/DME/IRU or
GPS required.
NOTE: RADAR required.



NOTE: Chart not to scale.



TAKEOFF MINIMUMS:
 Rws 10, 15L/R, 28: Standard with minimum climb of 500' per NM to 667.
 Rwy 33L: Standard with minimum climb of 500' per NM to 900.
 Rwy 33R: Standard with minimum climb of 500' per NM to 800.

(NARRATIVE ON FOLLOWING PAGE)
(NOTES CONTINUED ON FOLLOWING PAGE)

(FIXET3, FIXET) 20086
A1-804 (FAA)
BALTIMORE/
WASHINGTON INTL THURGOOD MARSHALL (BWTI)
BALTIMORE, MARYLAND

FIXET THREE DEPARTURE (RNAV)

DEPARTURE ROUTE DESCRIPTION



TAKEOFF RWY 10: Climb on heading 105° to 667, then on heading 105°, expect RADAR vectors to cross OHSSS at or above 11000, then on track 212° to cross CONLE at or below 14000, then on track 267° to FIXET, thence

TAKEOFF RWY 15L: Climb on heading 155° to 667, then direct GAGLR, then on track 149° to BEWEE, then on track 207° to cross OHSSS at or above 11000, then on track 212° to cross CONLE at or below 14000, then on track 267° to FIXET, thence

TAKEOFF RWY 15R: Climb on heading 155° to 667, then direct KEMMP, then on track 145° to BEWEE, then on track 207° to cross OHSSS at or above 11000, then on track 212° to cross CONLE at or below 14000, then on track 267° to FIXET, thence

TAKEOFF RWY 28: Climb on heading 285° to 667, then direct BOSLY, then left turn direct RAISN, then on track 149° to cross STABL at or below 13000, then on track 185° to cross OHSSS at or above 11000, then on track 212° to cross CONLE at or below 14000, then on track 267° to FIXET, thence

TAKEOFF RWY 33L/R: Climb on heading 335° to 667, then on heading 335°, expect RADAR vectors to cross OHSSS at or above 11000, then on track 212° to cross CONLE at or below 14000, then on track 267° to FIXET, thence

. . . . on assigned transition. Maintain 14000. Expect clearance to filed altitude within 10 minutes after departure.

FLASK TRANSITION (FIXET3.FLASK)

GLANC TRANSITION (FIXET3.GLANC)

MAULS TRANSITION (FIXET3.MAULS)

MELTN TRANSITION (FIXET3.MELTN)

OTTO TRANSITION (FIXET3.OTTO)

RAMAY TRANSITION (FIXET3.RAMAY)

RRSIN TRANSITION (FIXET3.RRSIN)

NE-3, 07 OCT 2021 to 04 NOV 2021

NE-3, 07 OCT 2021 to 04 NOV 2021