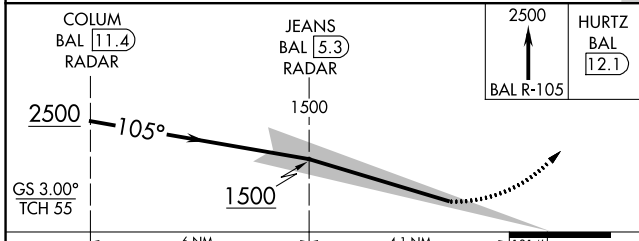
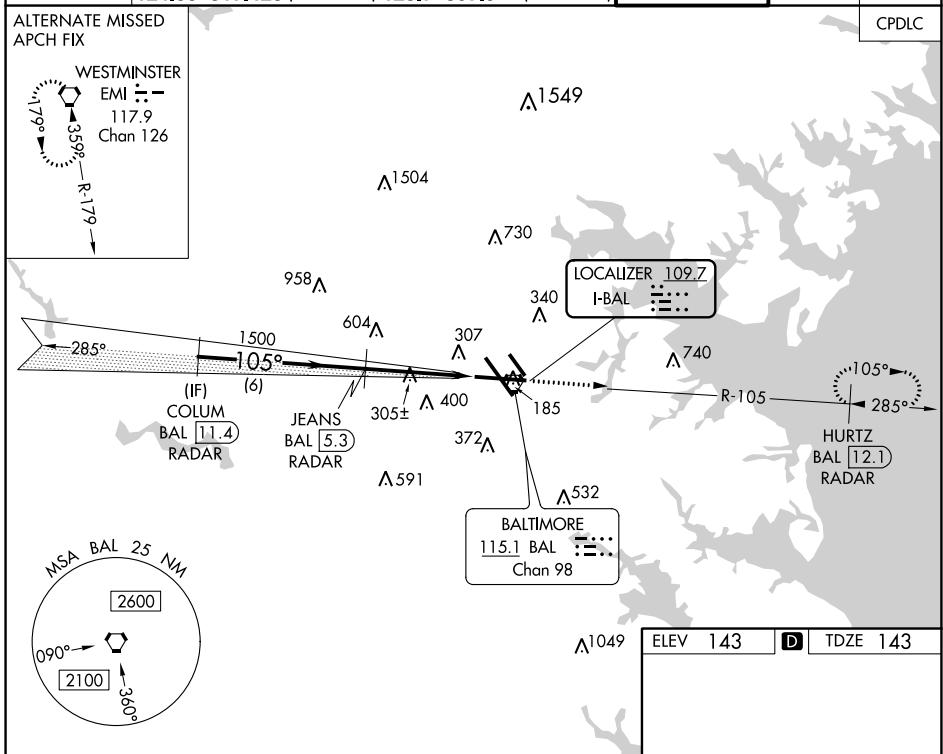


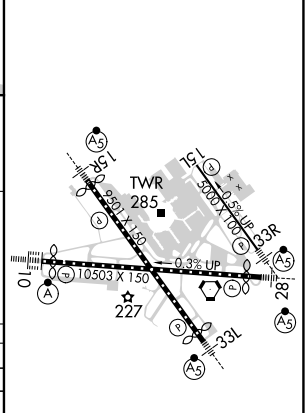
LOC I-BAL 109.7	APP CRS 105°	Rwy ldg 9953 TDZE 143 Apt Elev 143
---------------------------	------------------------	---

BALTIMORE/ **ILS RWY 10** (CAT II & III)
WASHINGTON INTL THURGOOD MARSHALL (BWI)

RADAR required for procedure entry. DME required.		ALSF-2 	MISSED APPROACH: Climb to 2500 on BAL VORTAC R-105 to HURTZ/BAL 12.1 DME/RADAR and hold.		
D-ATIS 115.1 127.8	POTOMAC APP CON 119.0 282.275 (020°-100°) 119.7 290.475 (131°-180°) 124.55 317.425 (101°-130°) 128.7 307.9 (181°-019°)		BALTIMORE TOWER 119.4 257.8	GND CON 121.9	CLNC DEL 118.05



ELEV 143	D	TDZE 143
----------	----------	----------



CATEGORY	A	B	C	D
S-ILS 10	CAT II RA 102/12 100 DA 243			
S-ILS 10	CAT III RVR 06			

CATEGORY II & III ILS - SPECIAL AIRCREW & AIRCRAFT CERTIFICATION REQUIRED

TDZ/CL Rwy 10 and 33L
REIL Rwy 15L and 33R
HIRL all rwy's

ILS RWY 10 (CAT II & III)

NE-3, 07 OCT 2021 to 04 NOV 2021

NE-3, 07 OCT 2021 to 04 NOV 2021