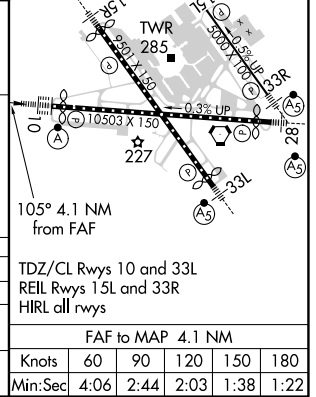
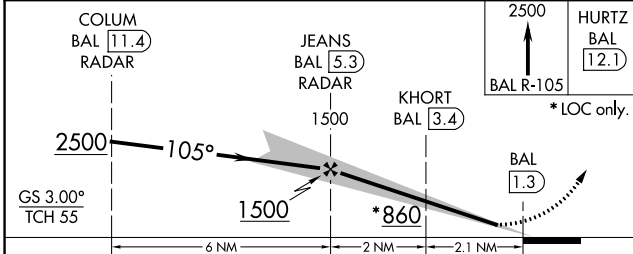
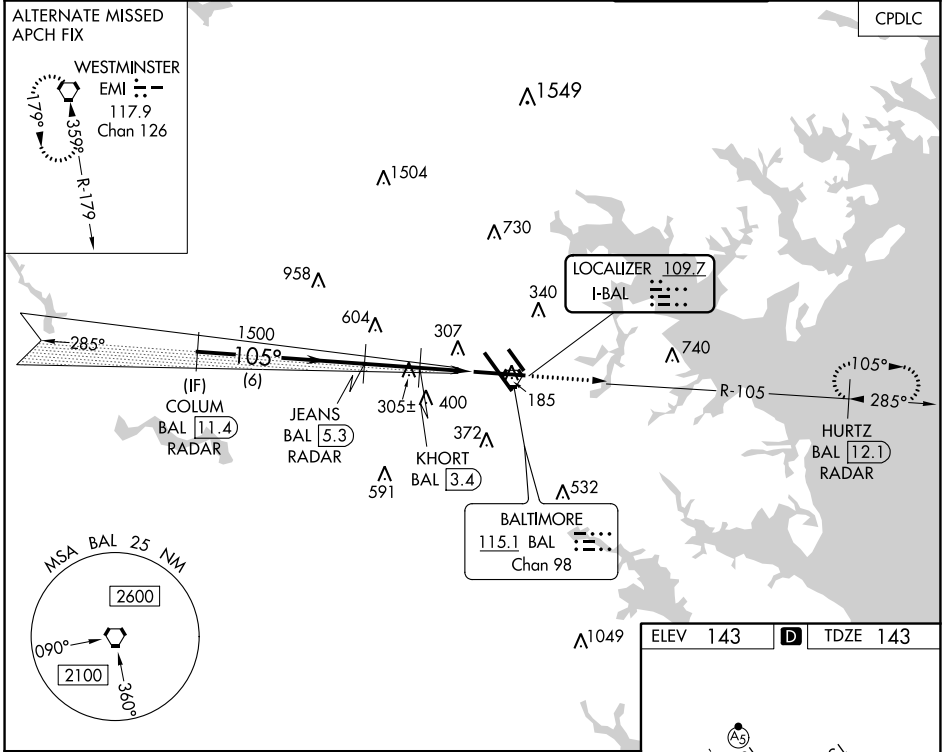


LOC I-BAL 109.7	APP CRS 105°	Rwy ldg 9953 TDZE 143 Apt Elev 143
---------------------------	------------------------	---

BALTIMORE/
WASHINGTON INTL THURGOOD MARSHALL (BWI)
ILS or LOC RWY 10

RADAR required for procedure entry. DME required.		ALSF-2 	MISSED APPROACH: Climb to 2500 on BAL VORTAC R-105 to HURTZ/BAL 12.1 DME/RADAR and hold.	
D-ATIS 115.1 127.8	POTOMAC APP CON 119.0 282.275 (020°-100°) 119.7 290.475 (131°-180°) 124.55 317.425 (101°-130°) 128.7 307.9 (181°-019°)		BALTIMORE TOWER 119.4 257.8	GND CON 121.9
ALTERNATE MISSED APCH FIX				CLNC DEL 118.05



ELEV 143	D	TDZE 143		
CATEGORY	A	B	C	D
S-ILS 10	343/18		200 (200-½)	
S-LOC 10	580/24 437 (500-½)		580/40 437 (500-¾)	
C CIRCLING	640-1 497 (500-1)	660-1 517 (600-1)	700-1½ 557 (600-1½)	860-2¼ 717 (800-2¼)
TDZ/CL Rwys 10 and 33L REIL Rwys 15L and 33R HIRL all rwys				
FAF to MAP 4.1 NM				
Knots	60	90	120	150 180
Min:Sec	4:06	2:44	2:03	1:38 1:22

NE-3, 07 OCT 2021 to 04 NOV 2021

NE-3, 07 OCT 2021 to 04 NOV 2021