

LOC I-OEH 109.7	APP CRS 285°	Rwy Idg 9803	TDZE 143	Apt Elev 143
---------------------------	------------------------	------------------------	--------------------	------------------------

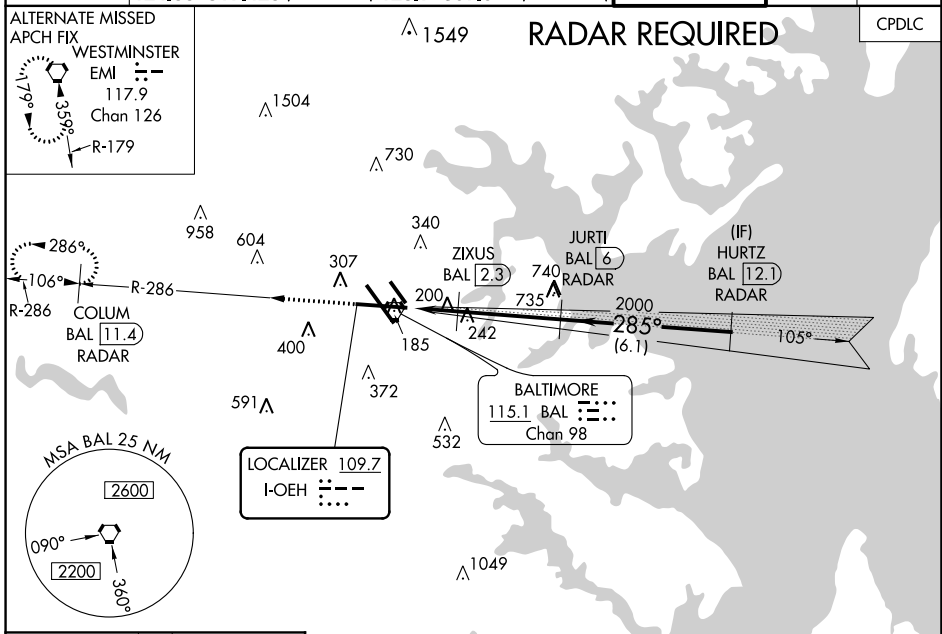
BALTIMORE/
WASHINGTON INTL THURGOOD MARSHALL (BWI) **ILS or LOC RWY 28**

▼ DME or radar required. For inoperative MALS, increase S-LOC 28
▲ Cat C/D visibility to 1½ mile, and increase ZIXUS fix S-LOC 28
 Cat C/D visibility to RVR 4500.
 **RVR 1800 authorized with the use of FD or AP or HUD to DA.



MISSED APPROACH: Climb to 2500 on
 BAL VORTAC R-286 to COLUM/BAL
 1.4 DME/RADAR and hold.

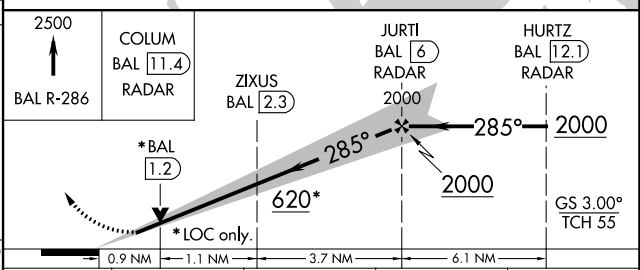
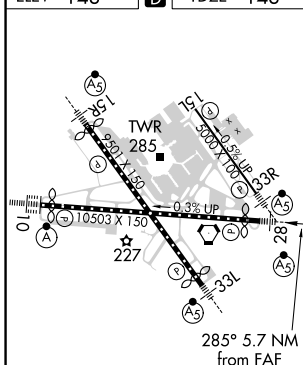
D-ATIS 115.1 127.8	POTOMAC APP CON (020°-100°) 119.0 282.275 (101°-130°) 124.55 317.425	(131°-180°) 119.7 290.475 (181°-019°) 128.7 307.9	BALTIMORE TOWER 119.4 257.8	GND CON 121.9	CLNC DEL 118.05
------------------------------	------------------------------------------------------------------------------------------	--------------------------------------------------------------------	----------------------------------------------	--------------------------------	----------------------------------



NE-3, 07 OCT 2021 to 04 NOV 2021

NE-3, 07 OCT 2021 to 04 NOV 2021

ELEV 143	D	TDZE 143
-----------------	----------	-----------------



CATEGORY	A	B	C	D
S-ILS 28	**343/24 200 (200-½)			
S-LOC 28	620/24	477 (500-½)	620/50	477 (500-1)
C CIRCLING	640-1 497 (500-1)	660-1 517 (600-1)	700-1½ 557 (600-½)	860-2¼ 717 (800-2¼)
ZIXUS FIX MINIMUMS (DME REQUIRED)				
S-LOC 28	460/24 317 (400-½)			
C CIRCLING	640-1 497 (500-1)	660-1 517 (600-1)	700-1½ 557 (600-½)	860-2¼ 717 (800-2¼)

FAF to MAP 5.7 NM					
Knots	60	90	120	150	180
Min:Sec	5:42	3:48	2:51	2:17	1:54

ILS or LOC RWY 28