

# MIIDY TWO ARRIVAL (RNAV)

BALTIMORE, MARYLAND

NE-3, 07 OCT 2021 to 04 NOV 2021

POTOMAC APP CON  
133.75 254.35  
BWID-ATIS  
115.1 127.8

NOTE: RADAR required.  
NOTE: RNAV 1;  
NOTE: DME/DME/IRU or GPS required.  
NOTE: Turbojet aircraft only.

BALTIMORE/  
WASHINGTON INTL.  
THURGOOD MARSHALL

MARTIN STATE



HUNNIN  
Landing RWY: East:  
Rwys 10, 15L/R:  
Expect RADAR vectors.

JANNS  
4000 210K  
Landing BWI:  
Rwy 33L:  
Expect assigned  
instrument approach  
or RADAR vectors.

DUDDS  
3000  
Landing BWI:  
Rwy 33R:  
Expect assigned  
instrument approach  
or RADAR vectors.

HURTZ

TROTZ  
3000  
Landing BWI: Rwy 28:  
Expect assigned  
instrument approach  
or RADAR vectors.

JUGMO  
3000

LURRL  
3000  
Expect assigned  
instrument approach  
or RADAR vectors.

ANCR

NAVY

SNUGI

KAPTIN

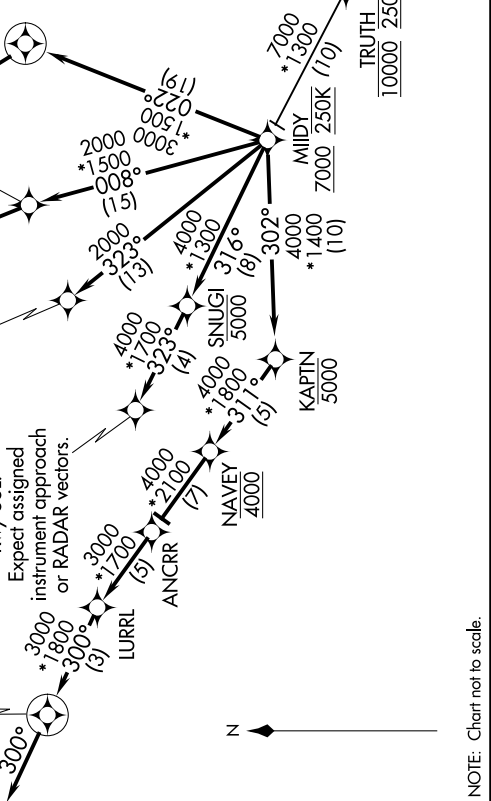
MIIDY

TRUTH

BUILT

CHOPS

LAFIN



## ARRIVAL ROUTE DESCRIPTION

### LAFIN TRANSITION (LAFIN.MIIDY2)

LANDING KBWI RWYS 10, 15L/R: From MIIDY on track 302° to cross KAPTIN at or below 5000, then on track 311° to cross NAVY at 4000, then on track 311° to ANCR, then on track 311° to LURRL, then on track 300° to HUNNIN, then on track 300°. Expect RADAR vectors to final approach course.

LANDING BWI RWY 28: From MIIDY on track 008° to cross TROTZ at 3000, then on track 314° to HURTZ. Expect assigned instrument approach or RADAR vectors.

LANDING BWI RWY 33L: From MIIDY on track 316° to cross SNUGI at or below 5000, then on track 323° to cross JANNS at or above 4000 and at 210K. Expect assigned instrument approach or RADAR vectors.

LANDING BWI RWY 33R: From MIIDY on track 323° to cross DUDDS at or above 3000. Expect assigned instrument approach or RADAR vectors.

LANDING MTN: From MIIDY on track 022° to cross JUGMO at 3000, then on heading 315°. Expect RADAR vectors to final approach course.

NOTE: Chart not to scale.

NE-3, 07 OCT 2021 to 04 NOV 2021

# MIIDY TWO ARRIVAL (RNAV)

BALTIMORE, MARYLAND