


APP CRS	Rwy ldg	<b>9803</b>
<b>285°</b>	TDZE	<b>143</b>
	Apt Elev	<b>143</b>

# RNAV (RNP) Z RWY 28

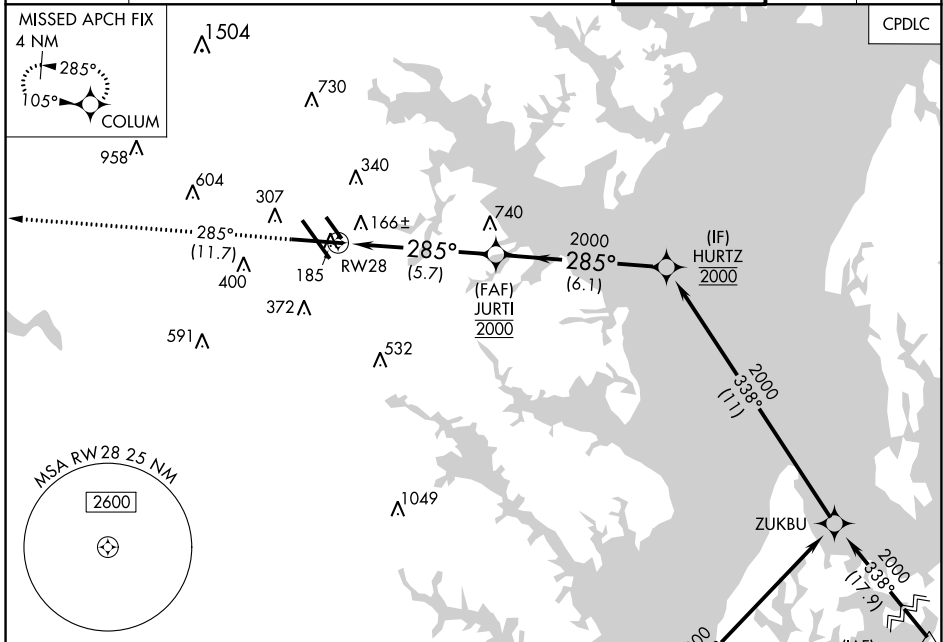
BALTIMORE/WASHINGTON INTL THURGOOD MARSHALL (BWI)

▼ For uncompensated Baro-VNAV systems, procedure NA below -12°C (11°F) or above 54°C (130°F). GPS Required. For inoperative MALSR, increase RNP 0.30 all Cats visibility to 1¼.

MALSR 

MISSED APPROACH: Climb to 2500 on track 285° to COLUM and hold.

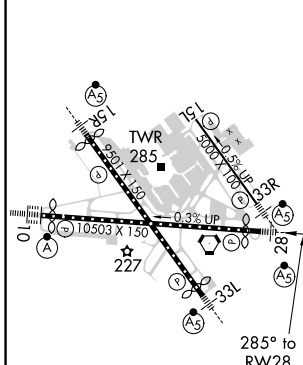
D-ATIS	POTOMAC APP CON	BALTIMORE TOWER	GND CON	CLNC DEL
<b>115.1 127.8</b>	(020°-100°) <b>119.7 290.475</b> (131°-180°) (101°-130°) <b>128.7 307.9</b> (181°-019°)	<b>119.4 257.8</b>	<b>121.9</b>	<b>118.05</b>



NE-3, 07 OCT 2021 to 04 NOV 2021

NE-3, 07 OCT 2021 to 04 NOV 2021

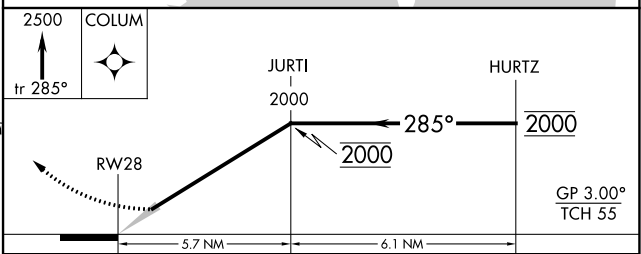
ELEV 143	<b>D</b>	TDZE 143
----------	----------	----------



Procedure NA for arrivals at RAVNNA on V379 westbound.

(IAF) RAVNNA 6000

Procedure NA for arrivals at BILIT on V308 eastbound.



CATEGORY	A	B	C	D
RNP 0.30 DA		521/45	378 (400-7%)	

TDZ/CL Rwy 10 and 33L  
REIL Rwy 15L and 33R  
HIRL all rwy

# RNAV (RNP) Z RWY 28

**AUTHORIZATION REQUIRED**