

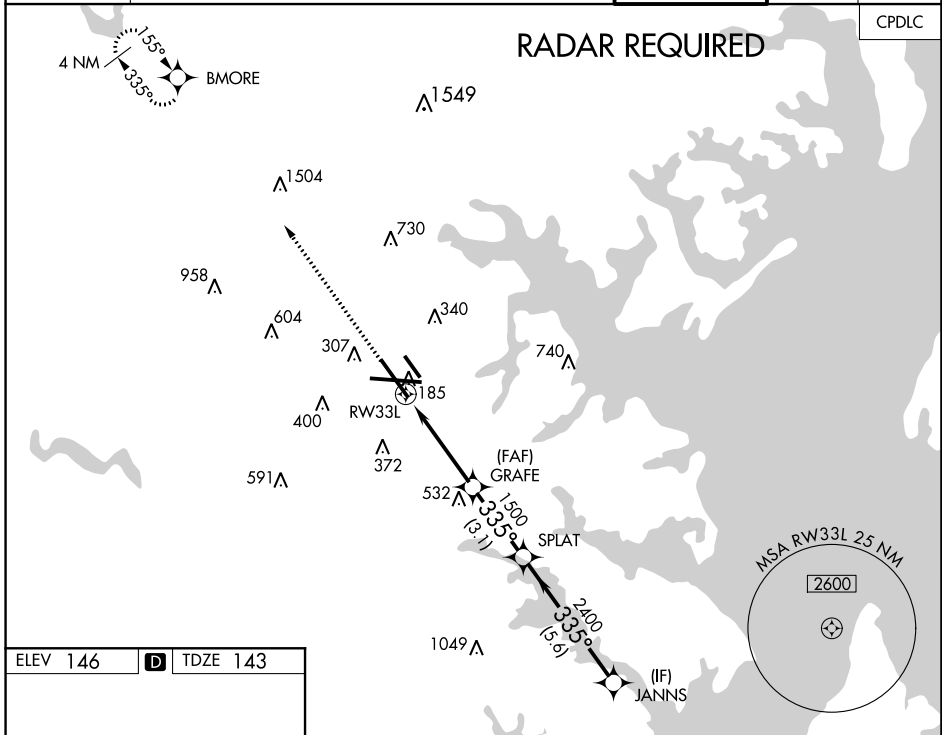
WAAS CH 82207 W 33A	APP CRS 335°	Rwy Idg TDZE 143 Apt Elev 146	8301 143 146
---	------------------------	---	---

RNAV (GPS) Y RWY 33L

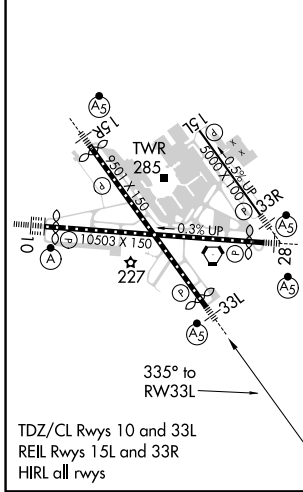
BALTIMORE/WASHINGTON INTL THURGOOD MARSHALL (BWI)

<p>For uncompensated Baro-VNAV systems, LNAV/VNAV NA below -12°C (11°F) or above 54°C (130°F). DME/DME RNP-0.3 NA.</p>	<p>MALS</p>	MISSED APPROACH: Climb to 3000 direct BMORE and hold.		
		CPDLC		

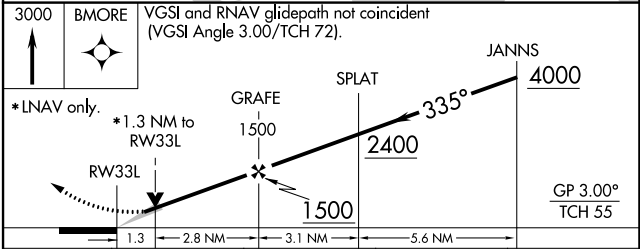
D-ATIS 115.1 127.8	POTOMAC APP CON (020°-100°) 119.7 290.475 (131°-180°) (101°-130°) 128.7 307.9 (181°-019°)	BALTIMORE TOWER 119.4 257.8	GND CON 121.9	CLNC DEL 118.05
------------------------------	---	---------------------------------------	-------------------------	---------------------------



ELEV 146	D	TDZE 143
----------	----------	----------



TDZ/CL Rwy 10 and 33L
REIL Rwy 15L and 33R
HIRL all rwy



CATEGORY	A	B	C	D
LPV DA		343/18	200 (200-½)	
LNAV/VNAV DA		432/24	289 (300-½)	
LNAV MDA	600/24	457 (500-½)	600/50	457 (500-1)
C CIRCLING	640-1 494 (500-1)	660-1 514 (600-1)	700-1½ 554 (600-1½)	880-2¼ 734 (800-2¼)

NE-3, 07 OCT 2021 to 04 NOV 2021

NE-3, 07 OCT 2021 to 04 NOV 2021