

TRISH THREE ARRIVAL (RNAV)

BALTIMORE, MARYLAND

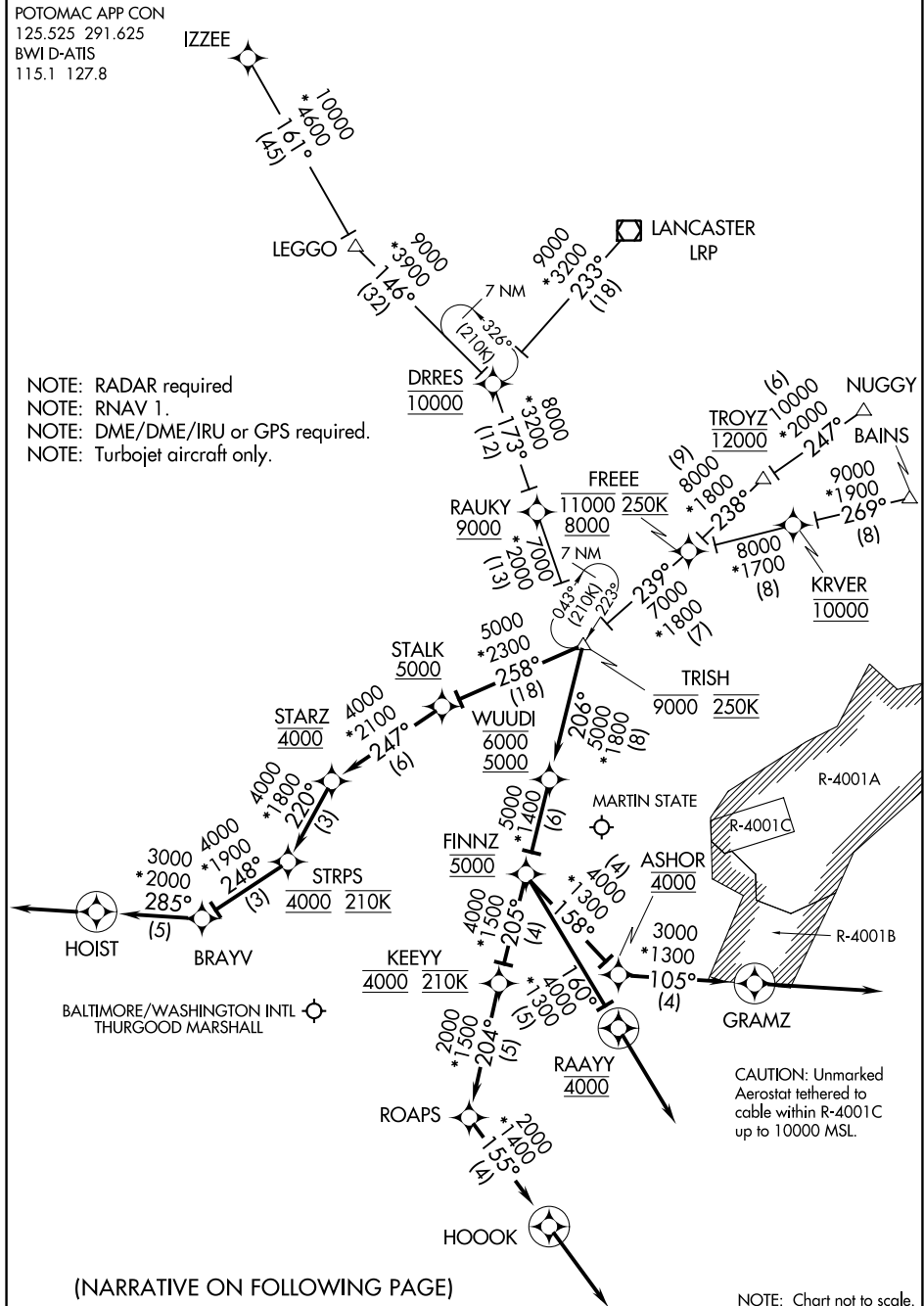
POTOMAC APP CON
125.525 291.625
BWI D-ATIS
115.1 127.8

IZZEE

LEGGO

LANCASTER
LRP

NOTE: RADAR required
NOTE: RNAV 1.
NOTE: DME/DME/IRU or GPS required.
NOTE: Turbojet aircraft only.



NE-3, 07 OCT 2021 to 04 NOV 2021

NE-3, 07 OCT 2021 to 04 NOV 2021

(NARRATIVE ON FOLLOWING PAGE)

NOTE: Chart not to scale.

TRISH THREE ARRIVAL (RNAV)

BALTIMORE, MARYLAND

ARRIVAL ROUTE DESCRIPTION

BAINS TRANSITION (BAINS.TRISH3):

IZZEE TRANSITION (IZZEE.TRISH3):

LANCASTER TRANSITION (LRP.TRISH3):

NUGGY TRANSITION (NUGGY.TRISH3):

LANDING BWI:

LANDING RWYS 10, 15L, 15R: From TRISH on track 258° to cross STALK at or above 5000, then on track 247° to cross STARZ at 4000, then on track 220° to cross STRPS at 4000 and at 210K, then on track 248° to BRAYV, then on track 285° to HOIST, then on heading 285° or as assigned by ATC. Expect RADAR vectors to final approach course.

LANDING RWY 28: From TRISH on track 206° to cross WUUDI between 5000 and 6000, then on track 206° to cross FINNZ at 5000, then on track 158° to cross ASHOR at 4000, then on track 105° to GRAMZ, then on heading 105° or as assigned by ATC. Expect RADAR vectors to final approach course.

LANDING RWYS 33L/R: From TRISH on track 206° to cross WUUDI between 5000 and 6000, then on track 206° to cross FINNZ at 5000, then on track 205° to cross KEEYY at 4000 and at 210K, then on track 204° to ROAPS, then on track 155° to HOOK, then on track 155°. Expect RADAR vectors to final approach course.

LANDING MTN: From TRISH on track 206° to cross WUUDI between 5000 and 6000, then on track 206° to cross FINNZ at 5000, then on track 160° to cross RAAYY at 4000, then on heading 160° or as assigned by ATC. Expect RADAR vectors to final approach course.

NE-3, 07 OCT 2021 to 04 NOV 2021

NE-3, 07 OCT 2021 to 04 NOV 2021