

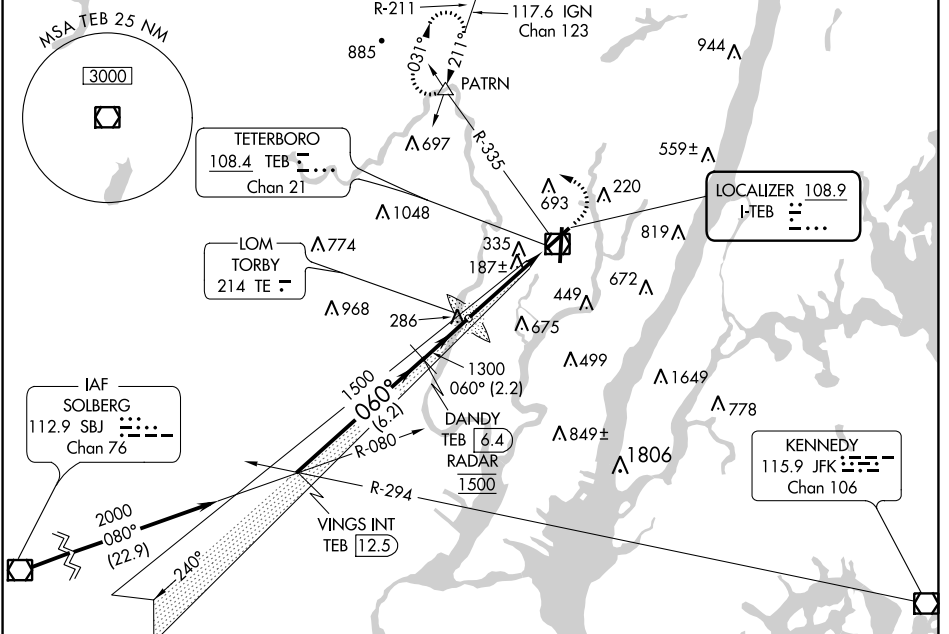
LOC I-TEB 108.9	APP CRS 060°	Rwy Idg 6013
		TDZE 6
		Apt Elev 8

ILS or LOC RWY 6

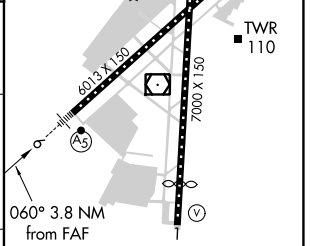
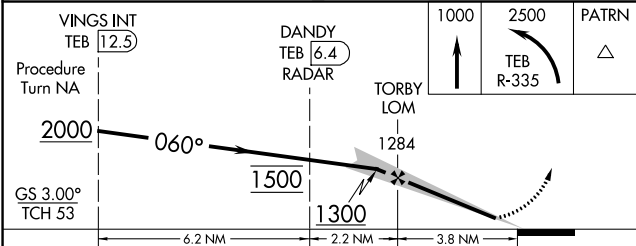
TETERBORO (TEB)

DME or RADAR required. ADF required for LOC only.				MALSR 	MISSED APPROACH: Climb to 1000, then climbing left turn to 2500 on TEB R-335 to PATRN INT and hold.
▼ DME from TEB VOR/DME. For inop ALS, increase LOC Cat C/D visibility to 1 3/8 SM. Circling NA Cats B, C, and D northwest of Rwy 6 and 19. When Circling to Rwy 24 at night, operational VGSJ required, remain on or above VGSJ glidepath until threshold.					

D-ATIS 114.2	NEW YORK APP CON 132.85	TETERBORO TOWER 127.6	TETERBORO TOWER 379.9	GND CON 119.5	GND CON 121.9	CLNC DEL 128.05	CPDLC
------------------------	-----------------------------------	---------------------------------	---------------------------------	-------------------------	-------------------------	---------------------------	-------



ELEV 8	D	TDZE 6
--------	---	--------



CATEGORY	A	B	C	D
S-ILS 6		206/18	200 (200-1/2)	
S-LOC 6	500/24	494 (500-1/2)	500/50	494 (500-1)
CIRCLING	760-1 752 (800-1)	760-1 1/4 752 (800-1 1/4)	820-2 1/2 812 (900-2 1/2)	1040-3 1032 (1100-3)
TDZ/CL Rwy 6 and 19 REIL Rwy 1, 6, 19 and 24 HIRL Rwy 1-19 and 6-24 FAF to MAP 3.8 NM				
Knots: 60 90 120 150 180 Min:Sec: 3:48 2:32 1:54 1:31 1:16				

NE-2, 07 OCT 2021 to 04 NOV 2021

NE-2, 07 OCT 2021 to 04 NOV 2021