

RNAV (GPS) X RWY 6

TETERBORO (TEB)

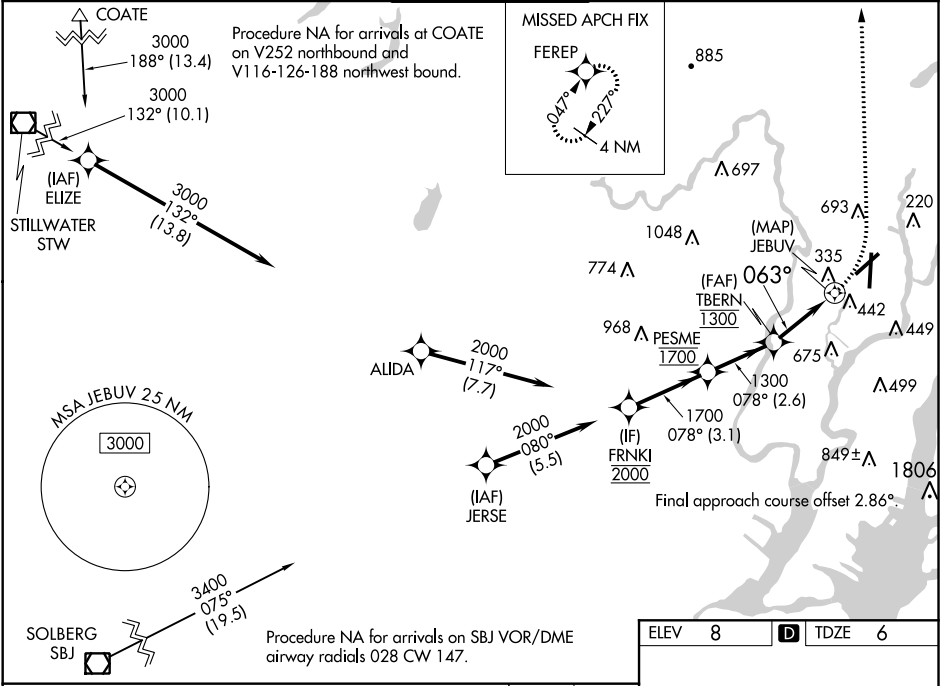
WAAS CH 65634 W06B	APP CRS 063°	Rwy Idg TDZE Apt Elev	6013 6 8
--	------------------------	-----------------------------	-------------------------------------

RNP APCH		TETERBORO TOWER		GND CON	CLNC DEL	CPDLC
114.2 132.85		127.6 379.9		119.5	121.9	128.05

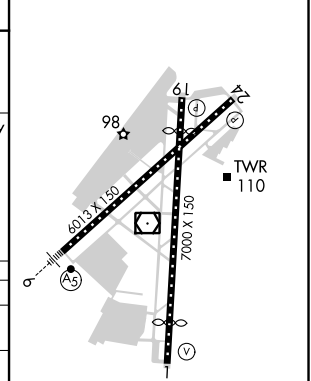
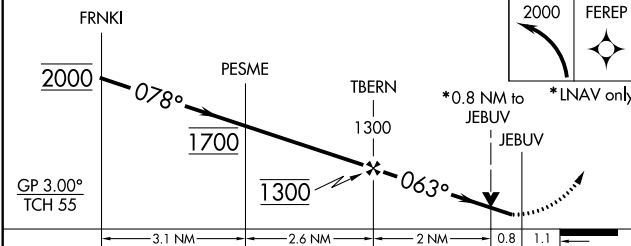
For uncompensated Baro-VNAV systems, LNAV/VNAV NA below -13°C (9°F) or above 54°C (130°F). Circling NA for Cats B, C and D NW of Rwy 6 and 19. For inop ALS, increase LPV all Cats visibility to 1 1/2 SM, LNAV/VNAV all Cats visibility to 2 1/2 SM, and LNAV Cats A/B visibility to 1 1/4 SM. When Circling to Rwy 24 at night, operational VGSI required, remain on or above VGSI glidepath until threshold.



MISSED APPROACH:
Climbing left turn to 2000 direct FERE P and hold.



ELEV 8	D TDZE 6
--------	-----------------



CATEGORY	A	B	C	D
LPV DA	459/55		453 (500-1)	
LNAV/VNAV DA	672-1 7/8		666 (700-1 7/8)	
LNAV MDA	660/45	654 (700- 7/8)	660-1 3/8	654 (700-1 3/8)
C CIRCLING	760-1 1/4	752 (800-1 1/4)	820-2 1/2 812 (900-2 1/2)	1040-3 1032 (1100-3)

TDZ/CL Rwy 6 and 19
HIRL Rwy 1-19 and 6-24
REIL Rwy 1, 6, 19 and 24

NE-2, 07 OCT 2021 to 04 NOV 2021

NE-2, 07 OCT 2021 to 04 NOV 2021