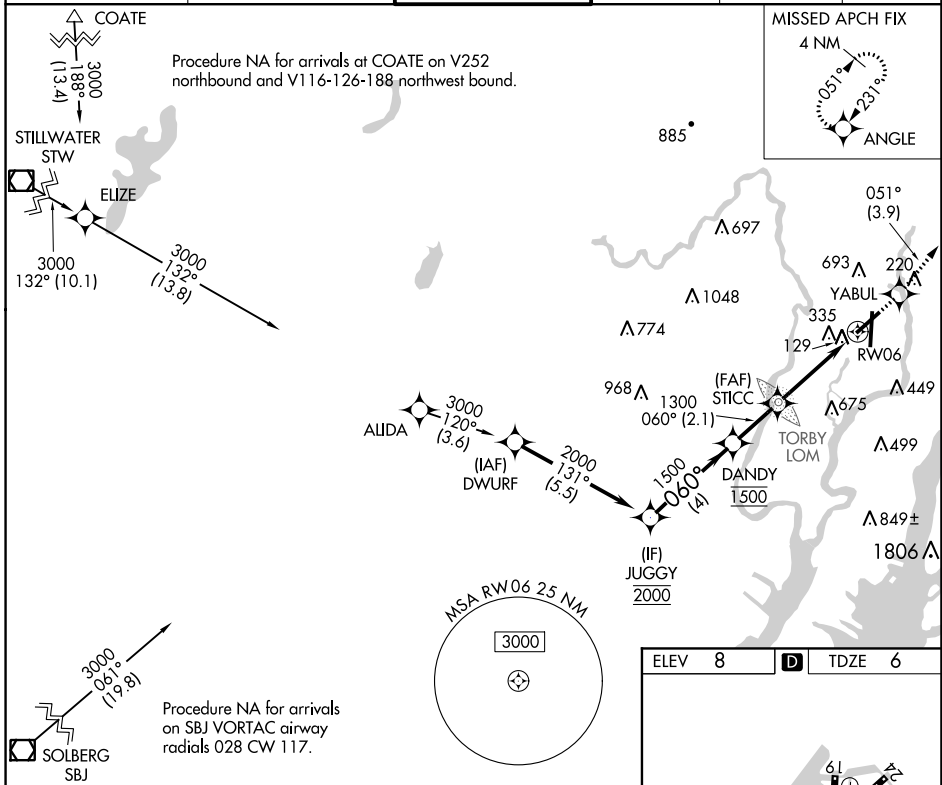


WAAS CH 65707 W06A	APP CRS 060°	Rwy Idg TDZE Apt Elev	6013 6 8
--	------------------------	-----------------------------	-------------------------------------

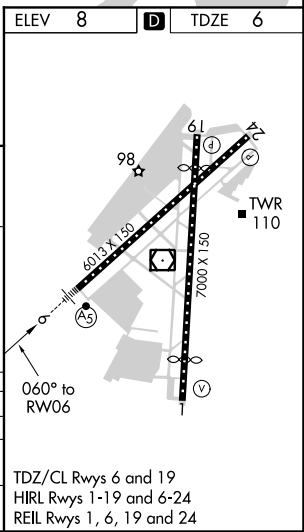
RNAV (GPS) Y RWY 6

TETERBORO (TEB)

RNP APCH.		MALSRL	MISSED APPROACH: Climb to 2000 direct YABUL and on track 051° to ANGLE and hold.		
<p>▼ Circling NA for Cats B, C, and D NW of Rws 6 and 19. When Circling to Rwy 24 at night, operational VGSI required, remain on or above VGSI glidepath until threshold.</p> <p>▲</p>					
D-ATIS 114.2 132.85	NEW YORK APP CON 127.6 379.9	TETERBORO TOWER 119.5	GND CON 121.9	CLNC DEL 128.05	CPDLC



JUGGY	DANDY	STICC	RWY 06									
2000	1500	1300	* 2.3 NM to RWY 06									
GP 3.00° TCH 53	* LNAV only.											
<table border="1"> <tr> <td>2000</td> <td>YABUL</td> <td>tr</td> <td>ANGLE</td> </tr> <tr> <td>↑</td> <td>✧</td> <td>051°</td> <td>✧</td> </tr> </table>					2000	YABUL	tr	ANGLE	↑	✧	051°	✧
2000	YABUL	tr	ANGLE									
↑	✧	051°	✧									
<table border="1"> <tr> <td>4 NM</td> <td>2.1 NM</td> <td>1.6 NM</td> <td>2.3 NM</td> <td></td> </tr> </table>					4 NM	2.1 NM	1.6 NM	2.3 NM				
4 NM	2.1 NM	1.6 NM	2.3 NM									
CATEGORY	A	B	C	D								
LPV DA	369/40 363 (400-¾)											
LNAV MDA	800/40	794 (800-¾)	800-1¾ 794 (800-1¾)	800-2 794 (800-2)								
CIRCLING	800-1 792 (800-1)	800-1¼ 792 (800-1¼)	820-2½ 812 (900-2½)	1040-3 1032 (1100-3)								



NE-2, 07 OCT 2021 to 04 NOV 2021

NE-2, 07 OCT 2021 to 04 NOV 2021

TDZ/CL Rws 6 and 19
HIRL Rws 1-19 and 6-24
REIL Rws 1, 6, 19 and 24