

| | | | |
|--------------|-------------|----------|-------------|
| VOR/DME TEB | APP CRS | Rwy Idg | 6013 |
| 108.4 | 231° | TDZE | 8 |
| Chan 21 | | Apt Elev | 8 |

VOR RWY 24

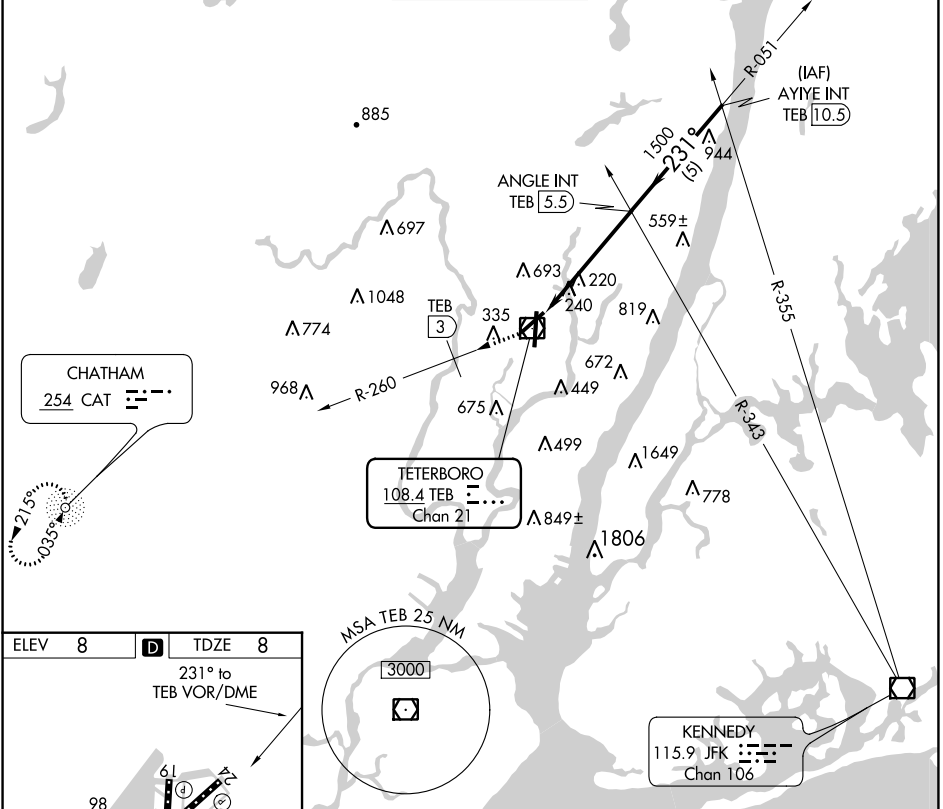
TETERBORO (TEB)

DME and RADAR required for procedure entry. DME required. ADF and DME required for missed approach.

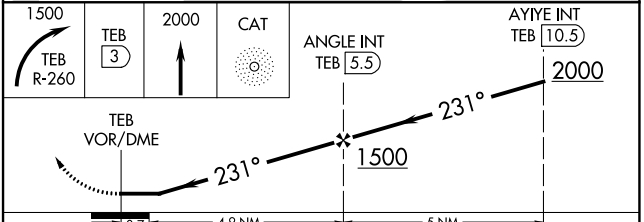
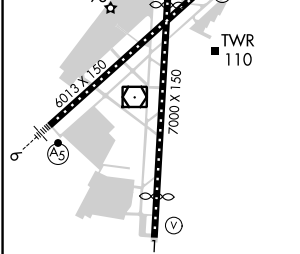
- ⚠** Circling NA for Cats B, C and D NW of Rwy 6 and 19. Rwy 24 helicopter visibility reduction below 1 SM NA. Straight-in Rwy 24, Circling Rwy 24 at night, operational VGSI required, remain on or above VGSI glidepath until threshold.

MISSED APPROACH: Climbing right turn to 1500 on TEB R-260 to 3 DME then climb to 2000 direct CAT NDB and hold.

| | | | | | |
|---------------------|--------------------|-----------------|--------------|---------------|-------|
| D-ATIS | NEW YORK APP CON | TETERBORO TOWER | GND CON | CLNC DEL | CPDLC |
| 114.2 132.85 | 127.6 379.9 | 119.5 | 121.9 | 128.05 | |



| | | |
|---------------------|----------|--------|
| ELEV 8 | D | TDZE 8 |
| 231° to TEB VOR/DME | | |



TDZ/CL Rwy 6 and 19
HIRL Rwy 1-19 and 6-24
REIL Rwy 1, 6, 19 and 24

| CATEGORY | A | B | C | D |
|-------------------|----------------------|--------------------------|------------------------|-------------------------|
| S-24 | 540-1 | 532 (600-1) | 540-1½ 532 (600-1½) | 540-1¾ 532 (600-1¾) |
| C CIRCLING | 760-1 752 (800-1) | 1000-1½ 992 (1000-1½) | 1000-3 992 (1000-3) | 1040-3 1032 (1100-3) |

NE-2, 07 OCT 2021 to 04 NOV 2021

NE-2, 07 OCT 2021 to 04 NOV 2021