


VOR/DME TEB	APP CRS	Rwy Idg	6013
108.4	064°	TDZE	6
Chan 21		Apt Elev	8

VOR/DME RWY 6

TETERBORO (TEB)

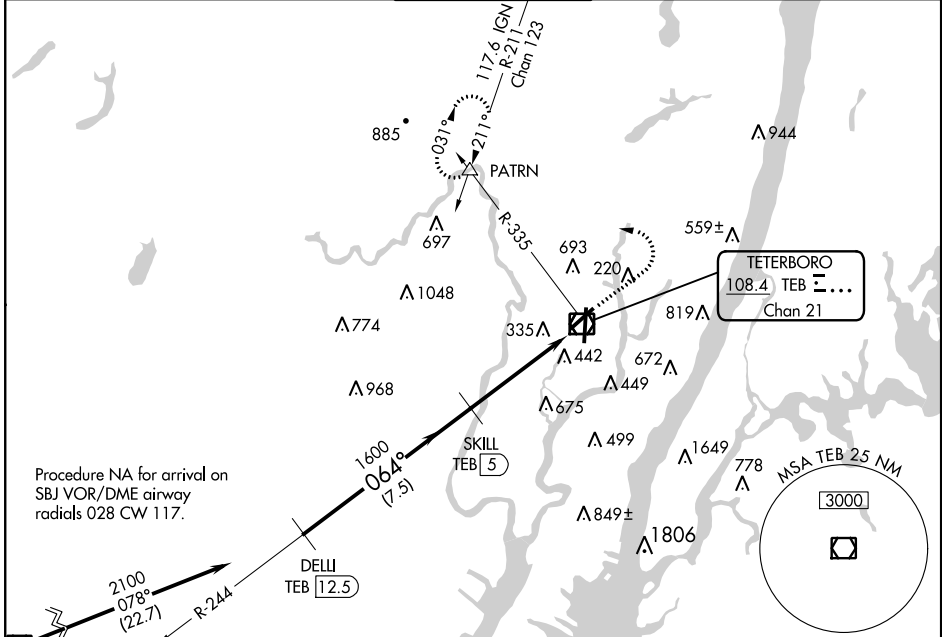
DME required for procedure.

⚠ Inoperative table does not apply to S-6 Cats A and B. Circling NA for Cats B, C, and D NW of Rwy 6 and 19. When Circling to Rwy 24 at night, operational VGSI required, remain on or above VGSI glidepath until threshold.

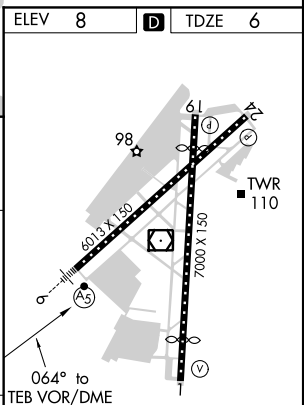
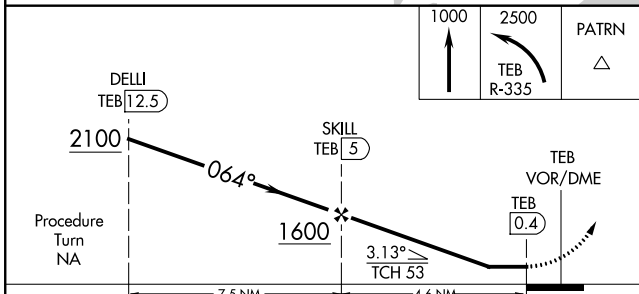
MALSR 

MISSED APPROACH: Climb to 1000, then climbing left turn to 2500 on TEB R-335 to PATRN INT and hold.

D-ATIS	NEW YORK APP CON	TETERBORO TOWER	GND CON	CLNC DEL	CPDLC
114.2 132.85	127.6 379.9	119.5	121.9	128.05	



ELEV	8	TDZE	6
------	----------	------	----------



CATEGORY	A	B	C	D
S-6	700/50 694 (700-1)	760-1 751 (800-1)	760-1¼ 751 (800-1¼)	700-1½ 694 (700-1½)
C CIRCLING	760-1 751 (800-1)	760-1¼ 751 (800-1¼)	820-2½ 812 (900-2½)	700-1¾ 694 (700-1¾)

TDZ/CL Rwy 6 and 19
HIRL Rwy 1-19 and 6-24
REIL Rwy 1, 6, 19 and 24

NE-2, 07 OCT 2021 to 04 NOV 2021

NE-2, 07 OCT 2021 to 04 NOV 2021