


LOC/DME I-EAU <b>109.5</b> Chan <b>32</b>	APP CRS <b>224°</b>	Rwy Idg <b>7301</b> TDZE <b>913</b> Apt Elev <b>913</b>
---	------------------------	---

# ILS or LOC RWY 22

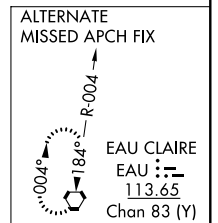
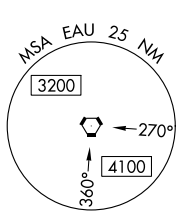
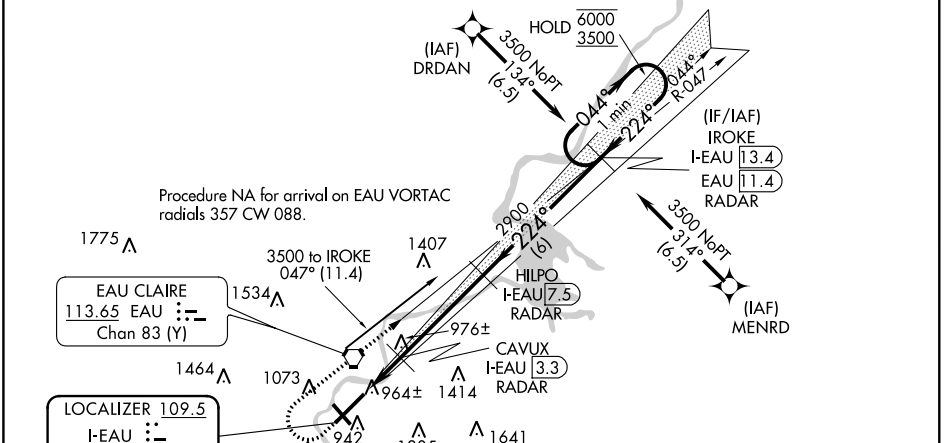
CHIPPEWA VALLEY RGNL (EAU)

From DRDAN and MENRD RNAV-1 GPS required.  
DME or RADAR required.

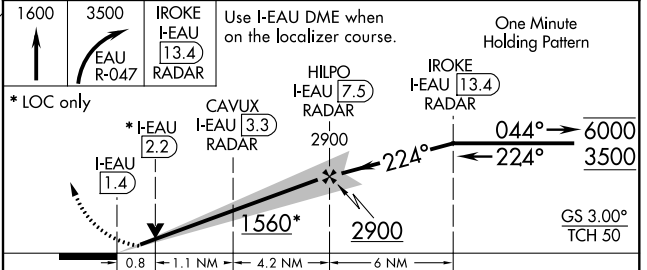
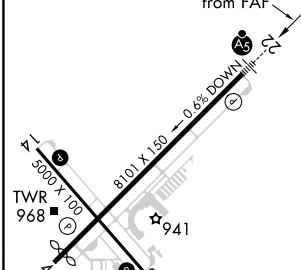
**⚠** For inop ALS increase S-LOC 22 Cat C and D visibility to  $\frac{3}{8}$  SM. For inop ALS when using Rice Lake altimeter setting, increase S-ILS 22 all Cats visibility to 1 SM. When local altimeter setting not received, use Rice Lake altimeter setting and increase DA 110 feet and all MDA 120 feet, increase S-LOC 22 Cat C and D and Circling Cat C visibility  $\frac{1}{4}$  SM. VDP NA when using Rice Lake altimeter setting.

**MALSR**  
 MISSED APPROACH: Climb to 1600 then climbing right turn to 3500 on EAU VORTAC R-047 to IROKE/I-EAU LOC/DME 13.4 DME/RADAR and hold.

ATIS <b>126.025</b>	MINNEAPOLIS CENTER <b>125.3 335.6</b>	EAU CLAIRE TOWER ★ <b>118.575 (CTAF) 0</b>	GND CON <b>120.925</b>	UNICOM <b>122.95</b>
------------------------	--	---	---------------------------	-------------------------



ELEV 913	<b>D</b>	TDZE 913
HIRL Rwy 4-22		
MIRL Rwy 14-32		
REIL Rwy 4 and 14		
		224° 6.1 NM from FAF



FAF to MAP 6.1 NM					
Knots	60	90	120	150	180
Min:Sec	6:06	4:04	3:03	2:26	2:02
<b>C</b> CIRCLING	1480-1 567 (600-1)	1540-1 627 (700-1)	1660-2½ 747 (800-2¼)	2200-3 1287 (1300-3)	
S-ILS 22		1113-½	200 (200-½)		
S-LOC 22		1220-½	307 (400-½)		

EC-3, 07 OCT 2021 to 04 NOV 2021

EC-3, 07 OCT 2021 to 04 NOV 2021