

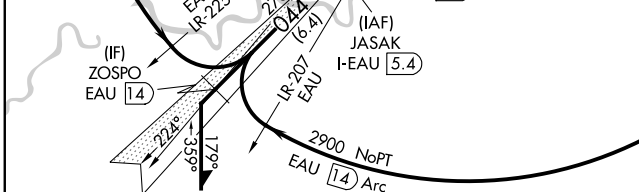
LOC/DME I-EAU 109.5 Chan 32	APP CRS 044°	Rwy Idg TDZE Apt Elev	7701 889 913
---	------------------------	-----------------------------	---

LOC BC RWY 4
CHIPPEWA VALLEY RGNL (EAU)

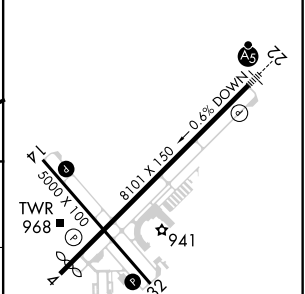
▼ DME required. VDP NA with Rice Lake Rgnl-Carl's Fld airport altimeter setting.
▲ When local altimeter setting not received, use Rice Lake Rgnl - Carl's Fld airport altimeter setting increase all MDA 120 feet, increase S-4 Cats C and D and Circling Cat C visibility ¼ mile. Circling Rwy 32 NA at night.

MISSED APPROACH: Climb to 2900 then left turn direct EAU VORTAC and hold.

ATIS 126.025	MINNEAPOLIS CENTER 125.3 335.6	EAU CLAIRE TOWER * 118.575 (CTAF) 0	GND CON 120.925	UNICOM 122.95
------------------------	--	---	---------------------------	-------------------------



ELEV 913	D	TDZE 889
----------	----------	----------



Remain within 10 NM	JASAK I-EAU 5.4	Use I-EAU DME when on the localizer course.	2900	EAU
2900	2700	YARGU I-EAU 2.5	I-EAU 1.3	PECIV I-EAU 0.5
Disregard GS indications.	3.00° TCH 44	1740		

CATEGORY	A	B	C	D
S-4	1380-1	491 (500-1)	1380-1 3/8	491 (500-1 1/8)
C CIRCLING	1480-1 567 (600-1)	1540-1 627 (700-1)	1660-2 1/4 747 (800-2 1/4)	2200-3 1287 (1300-3)

- HIRL Rwy 4-22 0
- MIRL Rwy 14-32 0
- REIL Rws 4 and 14 0

EC-3, 07 OCT 2021 to 04 NOV 2021

EC-3, 07 OCT 2021 to 04 NOV 2021