


WAAS CH 87006 W22A	APP CRS 224°	Rwy Idg TDZE Apt Elev	7301 913 913
--	------------------------	-----------------------------	---

RNAV (GPS) RWY 22

CHIPPEWA VALLEY RGNL (EAU)

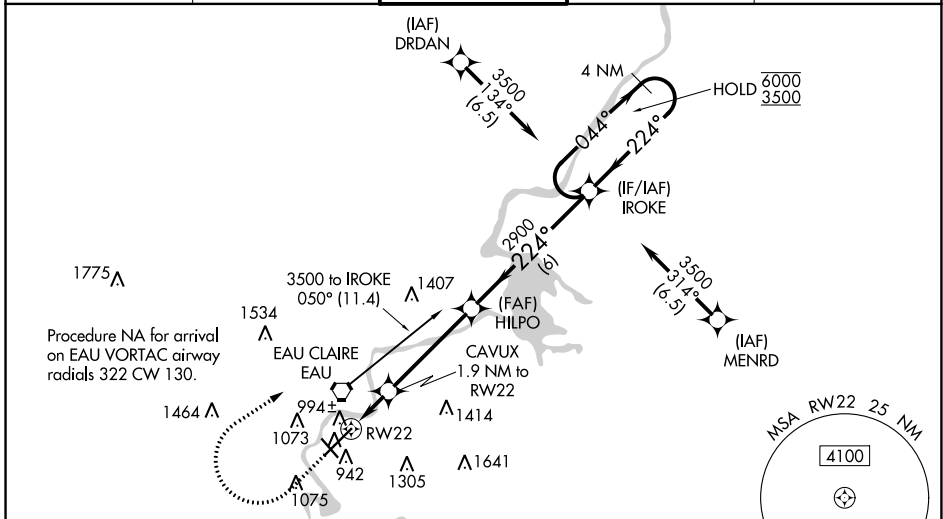
RNP APCH.

▼ Baro-VNAV and VDP NA when using Rice Lake altimeter setting. For uncompensated
 ▲ Baro-VNAV systems, LNAV/VNAV NA below -20°C or above 54°C. When local altimeter setting not received, use Rice Lake altimeter setting and increase LPV DA to 1223, LNAV/VNAV DA to 1285, and increase LNAV/VNAV visibility all Cats ¼ SM; increase all MDA 120 feet and LNAV Cats C/D visibility ⅓ SM and Circling Cat C visibility ¼ SM. For inop ALS increase LNAV/VNAV visibility all Cats to ⅓ SM and LNAV Cats C/D visibility to 1 SM. For inop ALS when using Rice Lake altimeter setting increase LPV visibility all Cats to 1 SM and LNAV Cats C/D visibility to 1 ⅓ SM.

MALSRL


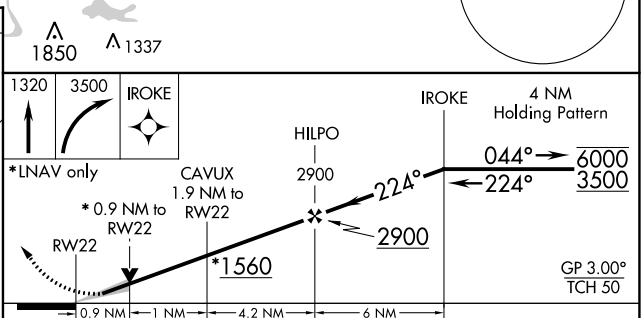
MISSED APPROACH: Climb to 1320 then climbing right turn to 3500 direct IROKE and hold.

ATIS 126.025	MINNEAPOLIS CENTER 125.3 335.6	EAU CLAIRE TOWER ★ 118.575 (CTAF) 0	GND CON 120.925	UNICOM 122.95
------------------------	--	---	---------------------------	-------------------------



ELEV 913 **D** TDZE 913

HIRL Rwy 4-22
 MIRL Rwy 14-32
 REIL Rwy 4 and 14



CATEGORY	A	B	C	D
LPV DA		1113-½	200 (200-½)	
LNAV/VNAV DA		1175-½	262 (300-½)	
LNAV MDA	1260-½	347 (400-½)	1260-⅝	347 (400-⅝)
C CIRCLING	1480-1 567 (600-1)	1540-1 627 (700-1)	1660-2¼ 747 (800-2¼)	2200-3 1287 (1300-3)

EC-3, 07 OCT 2021 to 04 NOV 2021

EC-3, 07 OCT 2021 to 04 NOV 2021