

WAAS CH <b>69217</b> <b>W04A</b>	APP CRS <b>044°</b>	Rwy Idg TDZE Apt Elev	<b>7701</b> <b>889</b> <b>913</b>
--	------------------------	-----------------------------	---

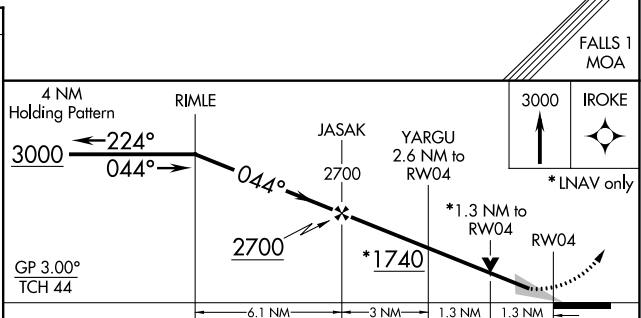
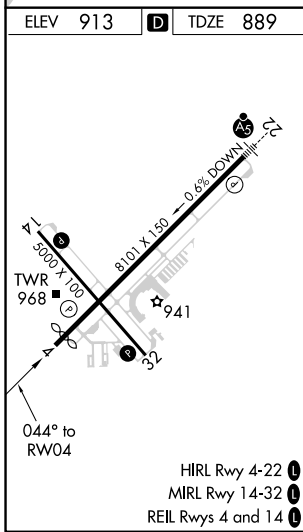
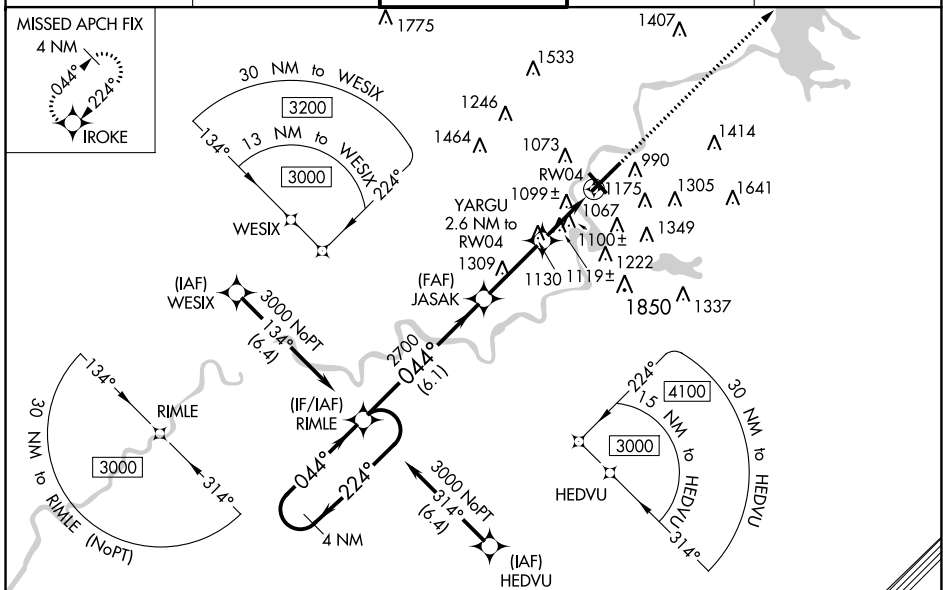
# RNAV (GPS) RWY 4

CHIPPEWA VALLEY RGNL (EAU)

**⚠** For uncompensated Baro-VNAV systems, LNAV/VNAV NA below -21°C (-5°F) or above 54°C (130°F). Baro-VNAV and VDP NA when using Rice Lake Rgnl-Carl's Fld altimeter setting. DME/DME RNP-0.3 NA. When local altimeter setting not received, use Rice Lake Rgnl-Carl's Fld altimeter setting and increase LPV DA to 1199, LNAV/VNAV DA to 1489 and all visibilities 7/8 SM. Increase all MDA 120 feet and LNAV Cat C/D and Circling Cat C visibility 1/4 SM. Circling Rwy 32 NA at night.

MISSED APPROACH:  
Climb to 3000 direct  
IROKE and hold.

ATIS <b>126.025</b>	MINNEAPOLIS CENTER <b>125.3 335.6</b>	<b>EAU CLAIRE TOWER*</b> <b>118.575</b> (CTAF) <b>0</b>	GND CON <b>120.925</b>	UNICOM <b>122.95</b>
------------------------	--	--	---------------------------	-------------------------



CATEGORY	A	B	C	D
LPV DA		1089-3/4	200 (200-3/4)	
LNAV/VNAV DA		1379-15/8	490 (500-15/8)	
LNAV MDA	1360-1	471 (500-1)	1360-1 3/8	471 (500-1 3/8)
<b>CIRCLING</b>	1480-1 567 (600-1)	1540-1 627 (700-1)	1660-2 1/4 747 (800-2 1/4)	2200-3 1287 (1300-3)

EC-3, 07 OCT 2021 to 04 NOV 2021

EC-3, 07 OCT 2021 to 04 NOV 2021