

AK, 07 OCT 2021 to 02 DEC 2021

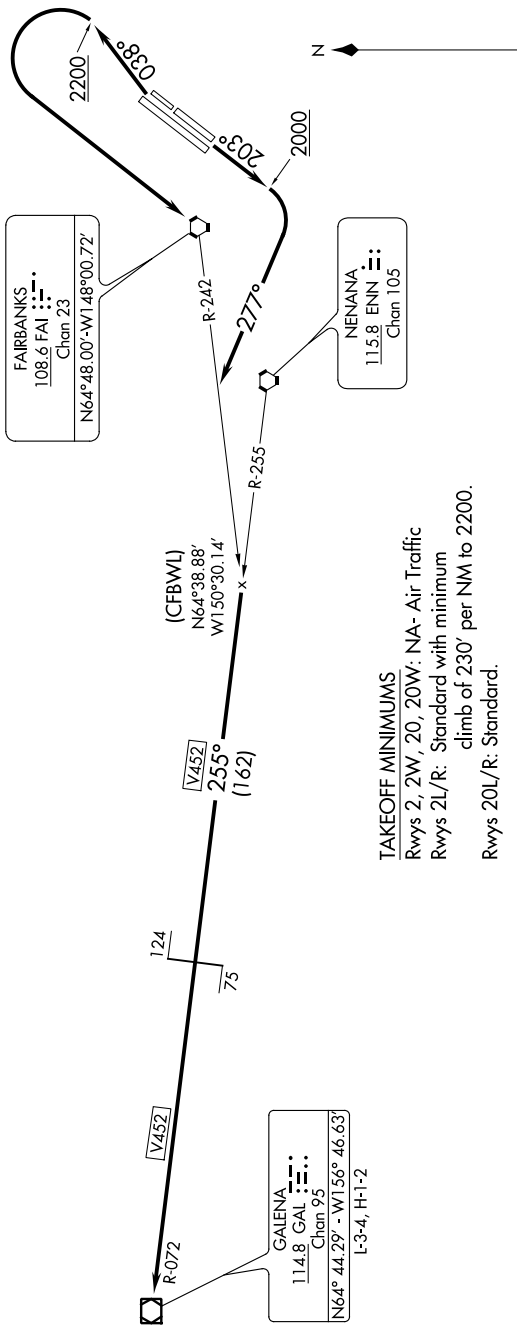
### DEPARTURE ROUTE DESCRIPTION

TAKEOFF RUNWAYS 2L/R: Climb heading 038° to 2200, then left turn direct FAI VORTAC, thence . . .

TAKEOFF RUNWAYS 20L/R: Climb heading 203° to 2000, then right turn heading 277°, thence . . .

. . . intercept FAI R-242 to ENN R-255, then on ENN R-255 and GAL R-072 to GAL VOR/DME, then continue climb on assigned route and altitude.

ATIS 124.4  
CLNC DEL 127.6  
GND CON 121.9  
FAIRBANKS TOWER  
118.3 257.8  
FAIRBANKS DEP CON  
125.35 363.2



TAKEOFF MINIMUMS  
Rwys 2, 2W, 20, 20W: NA - Air Traffic  
Rwys 2L/R: Standard with minimum  
climb of 230' per NM to 2200.  
Rwys 20L/R: Standard.

NOTE: DME Required

NOTE: Chart not to scale.

AK, 07 OCT 2021 to 02 DEC 2021