

# HI-ILS or LOC RWY 20R

LOC/DME I-FAI <b>110.3</b> Chan <b>40</b>	APCH CRS <b>200°</b>	Rwy Idg <b>11,050</b> TDZE <b>439</b> Arprt Elev <b>439</b>	AL-1234 [USAF]	FAIRBANKS INTL (PAFA)
---	-------------------------	---	----------------	-----------------------

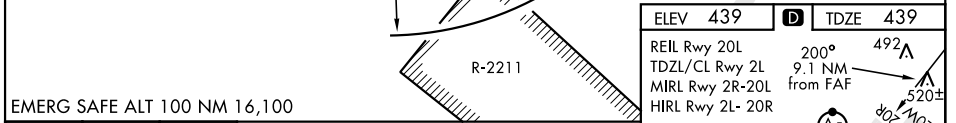
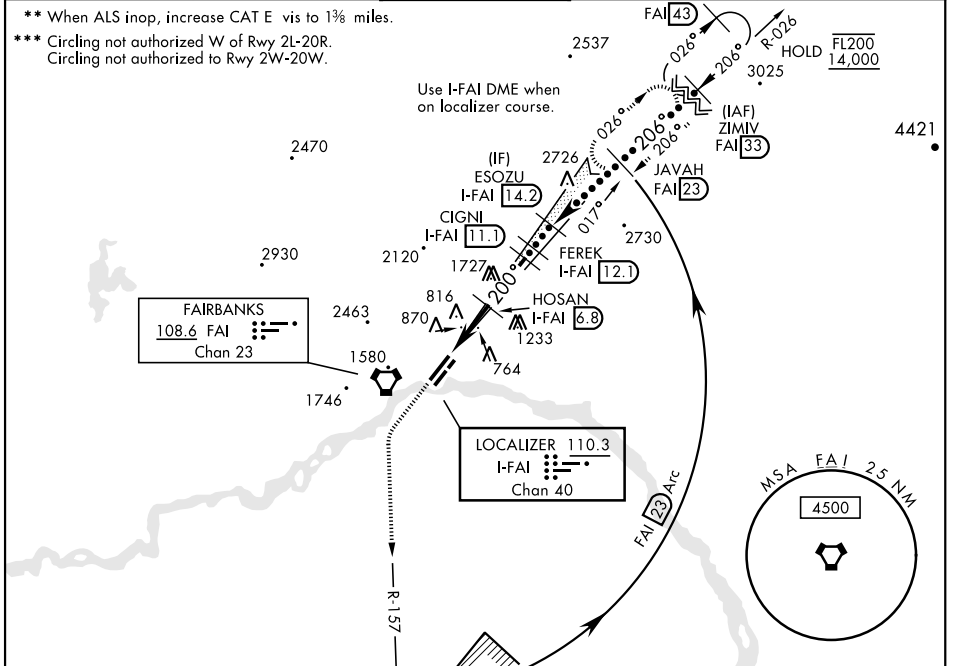
DME required (for procedure entry).

✦ \* When ALS inop, increase CAT E RVR to 40 and vis to ¼ mile.

MALSR (A5)

MISSED APPROACH: Climb to 8000 on heading 200° and FAI VORTAC R-157 to 23 DME, arc northbound to JAVAH/FAI VORTAC 23 DME and hold.

ATIS <b>124.4</b>	APP CON <b>125.35 363.2</b>	TOWER <b>118.3 257.8</b>	GND CON <b>121.9</b>	CLNC DEL <b>127.6</b>
----------------------	--------------------------------	-----------------------------	-------------------------	--------------------------



EMERG SAFE ALT 100 NM 16,100

8000	↑ hdg 197°	FAI 23 Arc	Procedure Turn NA	ZIMIV FAI R-026 (33)
VORTAC	LOC	DME	HOSAN I-FAI 6.8	FL200 14,000
			CIGNI I-FAI 11.1	4000
			FERREK I-FAI 12.1	8000
			ESOZU I-FAI 14.2	GS 3.00° TCH 56
			JAVAH FAI R-026 (23)	
			FAI 23 Arc	

CATEGORY	C	D	E
S-ILS 20R**	639/24	200 (200-½)	
S-LOC 20R**	880/45	441 (500-¾)	
CIRCLING***	900-1½ 461 (500-½)	1020-2 581 (600-2)	1060-2¼ 621 (700-2¼)

Rwy 2L Idg 11,050'  
Rwy 20R Idg 11,050'

# HI-ILS or LOC RWY 20R

AK, 07 OCT 2021 to 02 DEC 2021

AK, 07 OCT 2021 to 02 DEC 2021

