

AK, 07 OCT 2021 to 02 DEC 2021

**ARRIVAL ROUTE DESCRIPTION**

From RDFLG on track 291° to HRDNG, then on track 288° to cross RNDRR at or above 7000.

**LANDING RUNWAY 2L:** From RNDRR on track 260° to cross KRIIS at or above 4500 and at or below 210K, then on track 234° to cross BAYKR at or above 3700, then on track 203°.

Expect RADAR vectors to final approach course.

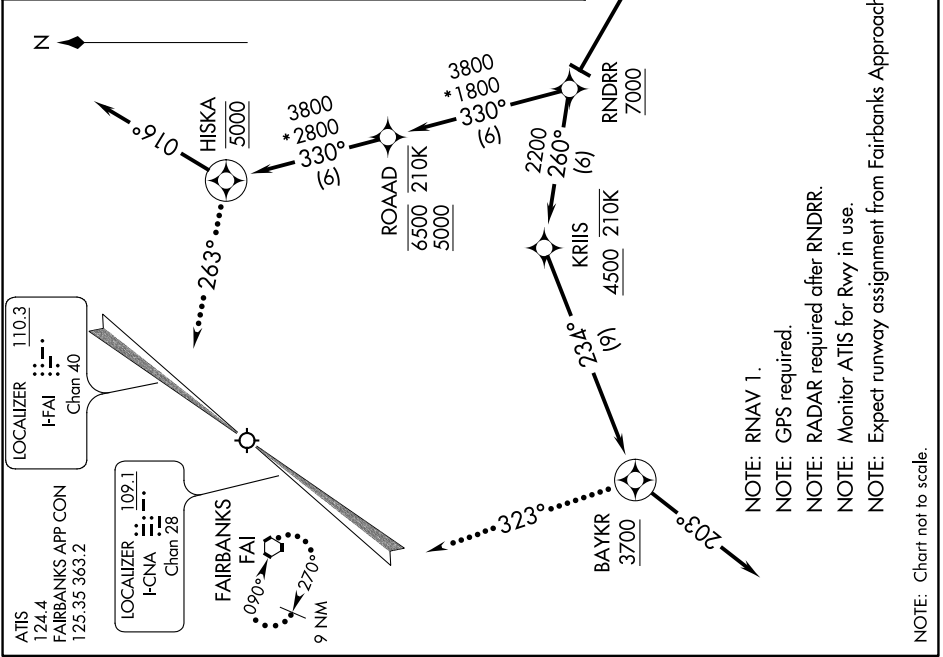
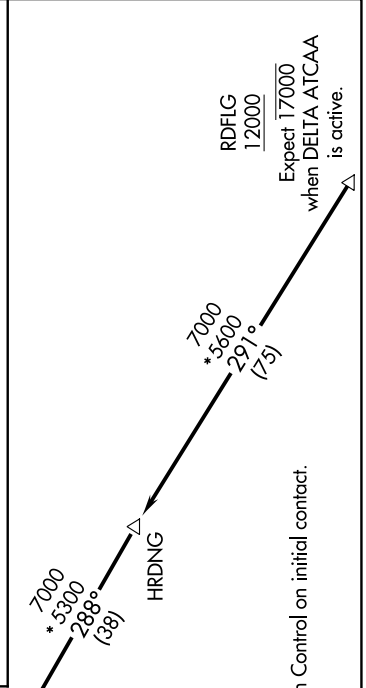
**LANDING RUNWAY 20R:** From RNDRR on track 330° to cross ROAAD between 5000 and 6500 and at or below 210K, then on track 330° to cross HISKA at 5000, then on track 016°.

Expect RADAR vectors to final approach course.

**LOST COMMUNICATIONS**

**RUNWAY 2L:** After BAYKR fly heading 323°, maintain 3700 intercept and execute the ILS or LOC Rwy 2L approach. If unable, proceed direct to FAI VORTAC and hold, maintain 5000.

**RUNWAY 20R:** After HISKA, fly heading 263°, maintain 4200, intercept and execute the ILS or LOC Rwy 20R approach. If unable, proceed direct to FAI VORTAC and hold, maintain 5000.



ATIS 124.4  
FAIRBANKS APP CON 125.35 363.2

LOCALIZER 110.3  
HFAI Chan 40

LOCALIZER 109.1  
I-CNA Chan 28

FAIRBANKS FAI

9 NM

- NOTE: RNAV 1.
- NOTE: GPS required.
- NOTE: RADAR required after RNDRR.
- NOTE: Monitor ATIS for Rwy in use.
- NOTE: Expect runway assignment from Fairbanks Approach Control on initial contact.

NOTE: Chart not to scale.

AK, 07 OCT 2021 to 02 DEC 2021