

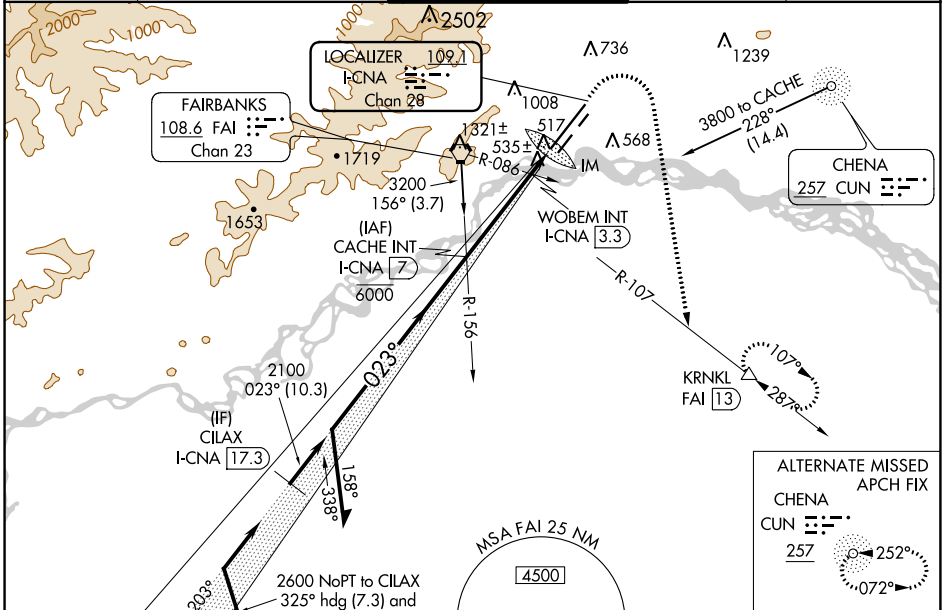
LOC/DME I-CNA 109.1 Chan 28	APP CRS 023°	Rwy Idg TDZE 439 Apt Elev 439	11050
--	------------------------	---	--------------

ILS or LOC RWY 2L

FAIRBANKS INTL (FAI) (PAFA)

DME Required.	ALSIF-2 	MISSED APPROACH: Climb to 900 then climbing right turn to 5000 on heading 170° and FAI VORTAC R-107 to KRNL/FAI 13 DME and hold, continue climb-in-hold to 5000.
 Circling NA west of Rwy 2L-20R. Circling NA to Rwys 2W and 20W. For inop ALS, increase S-ILS 2L Cat E visibility to RVR 4000 and S-LOC 2L Cat C/D/E visibility to RVR 5500. -32°C		

ATIS 124.4	FAIRBANKS APP CON 125.35 363.2	FAIRBANKS TOWER 118.3 257.8	GND CON 121.9	CLNC DEL 127.6
----------------------	--	---------------------------------------	-------------------------	--------------------------



ALTERNATE MISSED APCH FIX

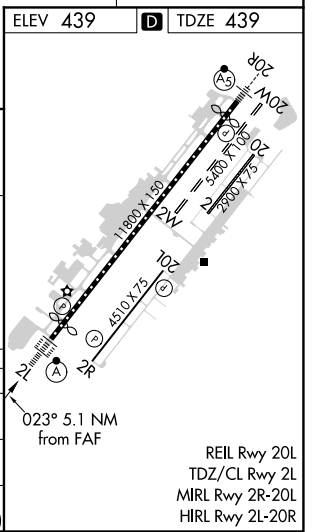
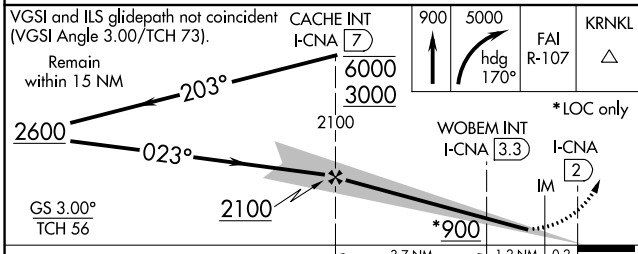
CHENA
CUN

257

252°

072°

ELEV 439	TDZE 439
----------	----------



VGSI and ILS glidepath not coincident (VGSI Angle 3.00/TCH 73). Remain within 15 NM	CACHE INT I-CNA (7)	900	5000	FAI R-107	KRNL
2600	6000	3000	2100	WOBEM INT I-CNA (3.3)	I-CNA (2)
203°	023°	2100	900	IM	
GS 3.00° TCH 56					
CATEGORY	A	B	C	D	E
S-ILS 2L	639/18 200 (200-½)				
S-LOC 2L	800/24	361 (400-½)	800/35 361 (400-¾)		
CIRCLING	880-1 441 (500-1)	900-1 461 (500-1)	900-1½ 461 (500-1½)	1020-2 581 (600-2)	1060-2¼ 621 (700-2¼)

AK, 07 OCT 2021 to 02 DEC 2021

AK, 07 OCT 2021 to 02 DEC 2021