

(RDFLG4.RDFLG) 21224

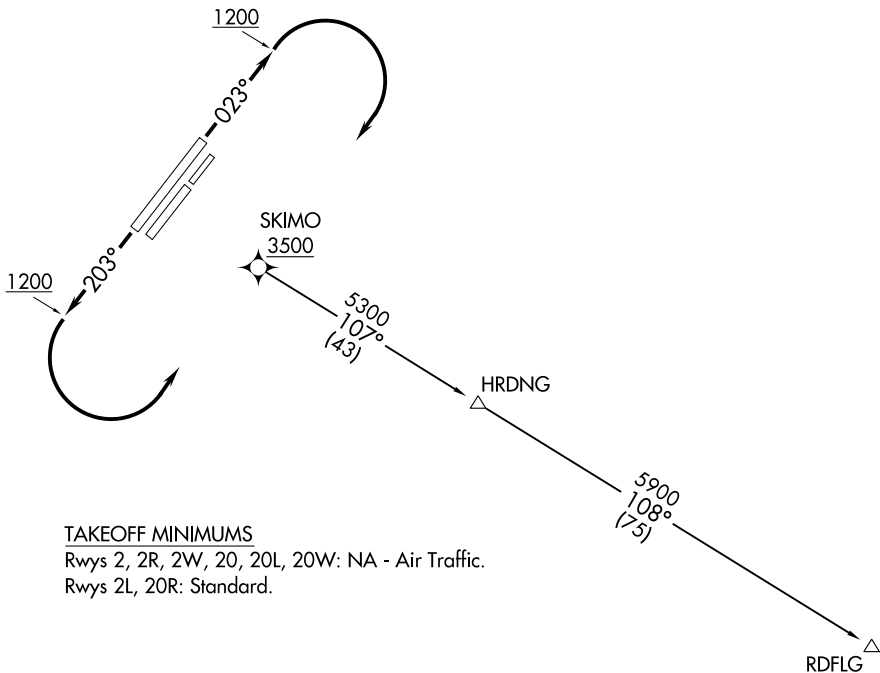
RDFLG FOUR DEPARTURE (RNAV)

AL-1234 (FAA)

FAIRBANKS INTL (FAI) (PAFA)
FAIRBANKS, ALASKA

**TOP ALTITUDE:
10000**

ATIS 124.4
CLNC DEL 127.6
GND CON 121.9
FAIRBANKS TOWER 118.3 257.8
FAIRBANKS DEP CON 125.35 363.2



TAKEOFF MINIMUMS

Rwys 2, 2R, 2W, 20, 20L, 20W: NA - Air Traffic.
Rwys 2L, 20R: Standard.

NOTE: GPS Required.
NOTE: RNAV-1.

NOTE: Chart not to scale.



DEPARTURE ROUTE DESCRIPTION

TAKEOFF RUNWAY 2L: Climb heading 023° to 1200, then climbing right turn direct SKIMO, cross SKIMO at or above 3500, thence. . . .

TAKEOFF RUNWAY 20R: Climb heading 203° to 1200, then climbing left turn direct SKIMO, cross SKIMO at or above 3500, thence. . . .

. . . .on RDFLG transition, climb and maintain 10000, expect 17000 ten minutes after departure.

RDFLG TRANSITION (RDFLG4.RDFLG)

RDFLG FOUR DEPARTURE (RNAV)
(RDFLG4.RDFLG) 12AUG21

FAIRBANKS, ALASKA
FAIRBANKS INTL (FAI) (PAFA)

AK, 07 OCT 2021 to 02 DEC 2021

AK, 07 OCT 2021 to 02 DEC 2021