


# RNAV (RNP) Z RWY 20R

FAIRBANKS INTL (FAI) (PAFA)

APP CRS	Rwy ldg <b>11050</b>
<b>203°</b>	TDZE <b>439</b>
	Apt Elev <b>439</b>

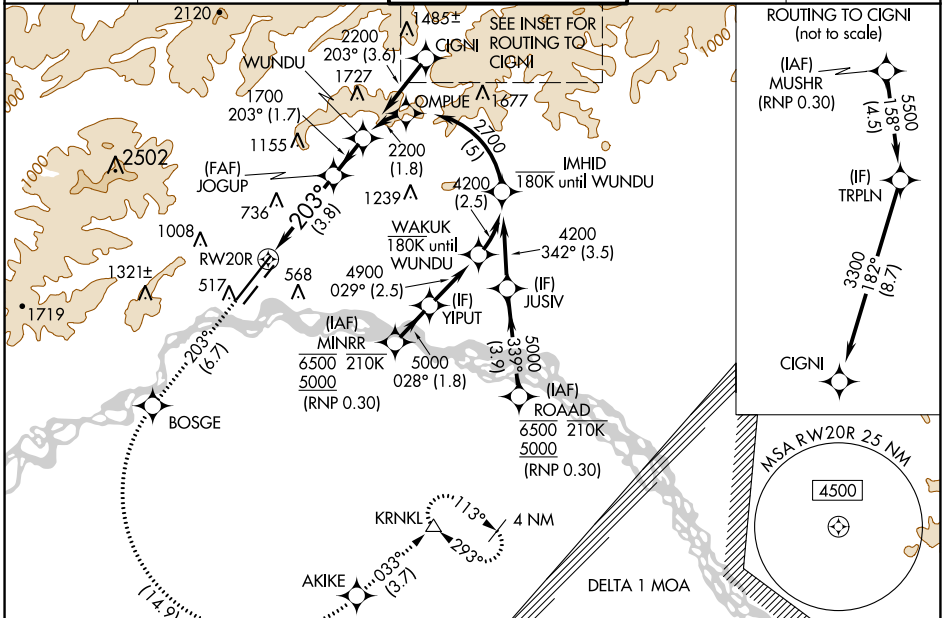
RNP AR APCH - GPS.

**⚠** For uncompensated Baro-VNAV systems, procedure NA below -32°C -18°C or above 54°C. For inop ALS, increase RNP 0.10 all Cats visibility to RVR 5000.

MALSR 

**MISSED APPROACH:** Climb to 4000 on track 203° to BOSGE, left turn to AKIKE, then track 033° to KRNLK and hold.

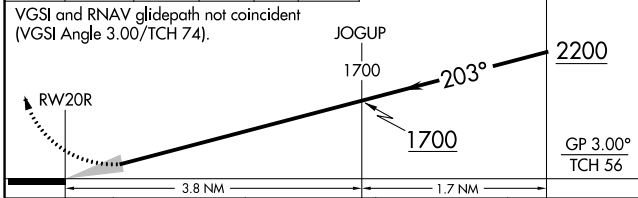
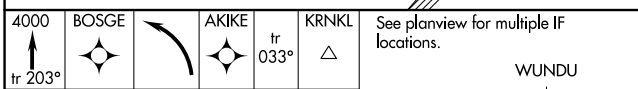
ATIS	FAIRBANKS APP CON	FAIRBANKS TOWER	GND CON	CLNC DEL
<b>124.4</b>	<b>125.35 363.2</b>	<b>118.3 257.8</b>	<b>121.9</b>	<b>127.6</b>



AK, 07 OCT 2021 to 02 DEC 2021

AK, 07 OCT 2021 to 02 DEC 2021

ELEV	439	TDZE	439
------	-----	------	-----



CATEGORY	A	B	C	D
RNP 0.10 DA		763/30	324 (400-5/8)	
RNP 0.30 DA		922/60	483 (500-1 1/4)	

## AUTHORIZATION REQUIRED

