

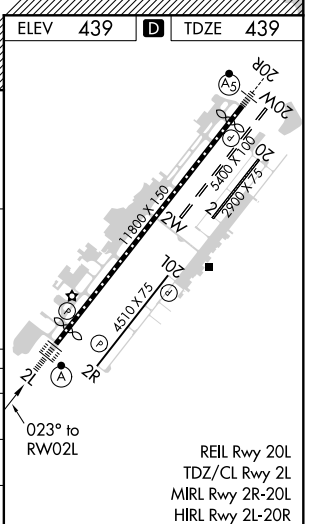
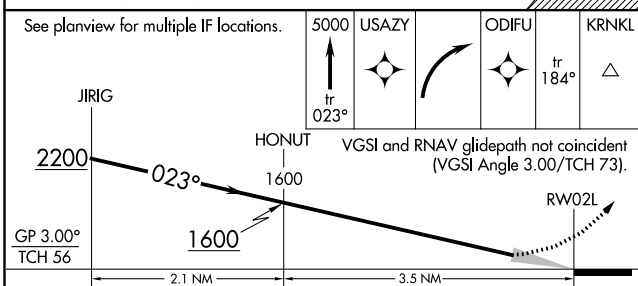
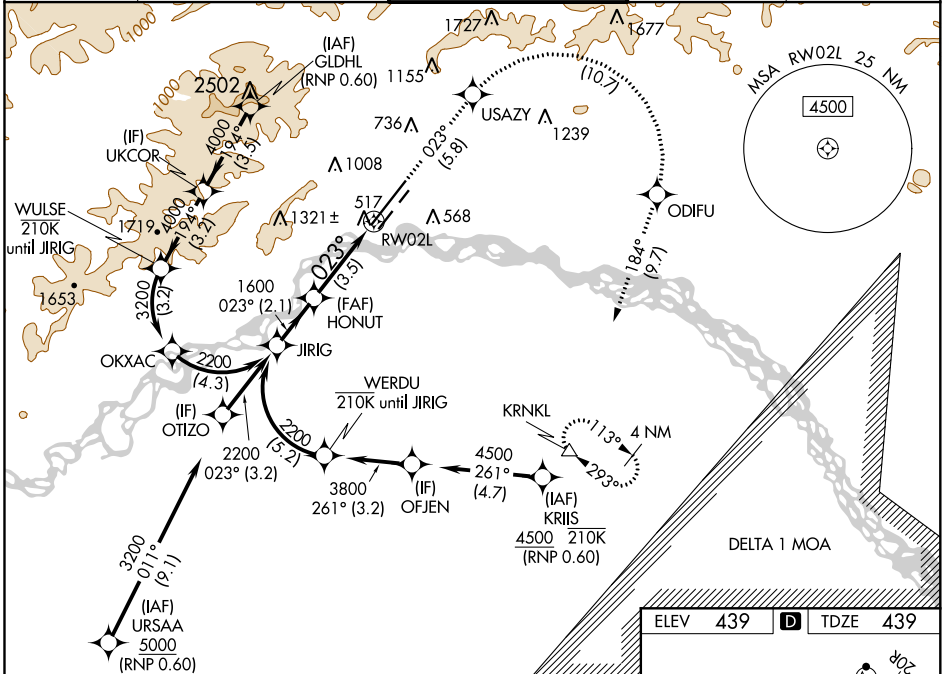
APP CRS	Rwy Idg	<b>11050</b>
<b>023°</b>	TDZE	<b>439</b>
	Apt Elev	<b>439</b>

# RNAV (RNP) Z RWY 2L

FAIRBANKS INTL (FAI) (PAFA)

RNP AR APCH - GPS.		ALSIF-2	MISSED APPROACH: Climb to 5000 on track 023° to USAZY and right turn to ODIFU and track 184° to KRNKL and hold.
-32°C For uncompensated Baro-VNAV systems, procedure NA below -18°C or above 54°C. For inop ALS, increase RNP 0.15 all Cats visibility to RVR 6000.			

ATIS <b>124.4</b>	FAIRBANKS APP CON <b>125.35 363.2</b>	FAIRBANKS TOWER <b>118.3 257.8</b>	GND CON <b>121.9</b>	CLNC DEL <b>127.6</b>
----------------------	--	---------------------------------------	-------------------------	--------------------------



CATEGORY	A	B	C	D
RNP 0.15 DA		798/40	359 (400-¾)	
RNP 0.30 DA		851/45	412 (500-⅞)	

**AUTHORIZATION REQUIRED**

AK, 07 OCT 2021 to 02 DEC 2021

AK, 07 OCT 2021 to 02 DEC 2021