

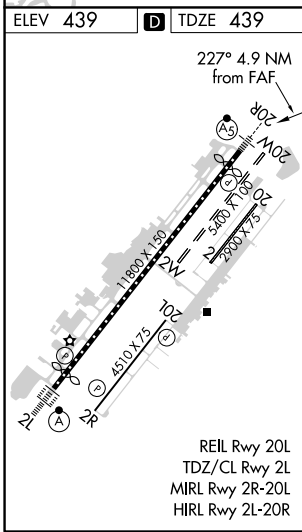
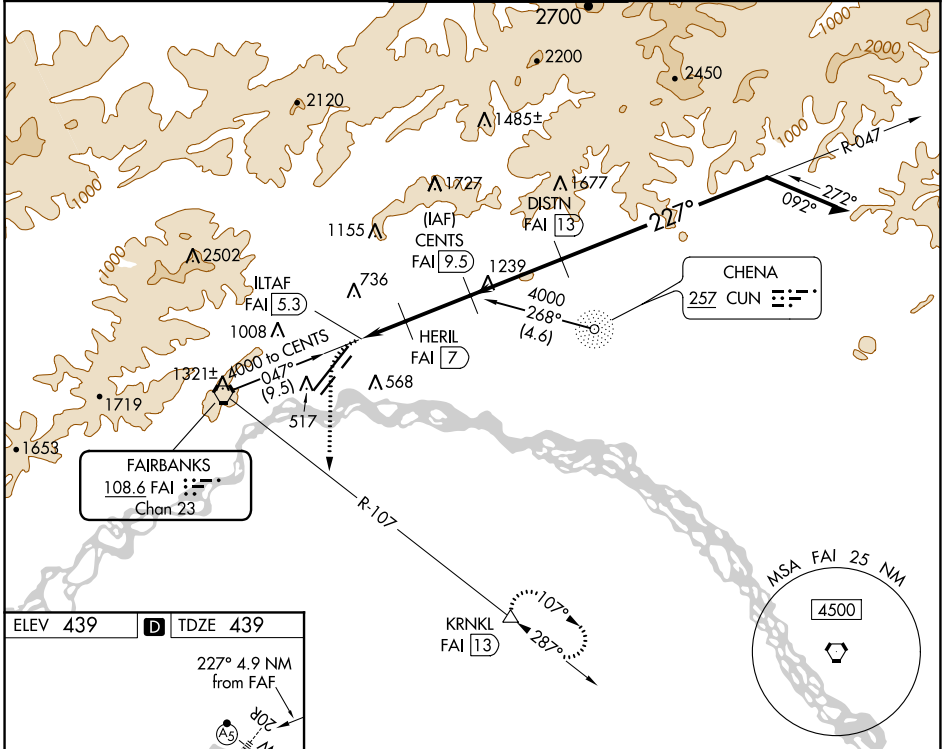
VORTAC FAI <b>108.6</b> Chan 23	APP CRS <b>227°</b>	Rwy Idg <b>11050</b> TDZE <b>439</b> Apt Elev <b>439</b>
---------------------------------------	------------------------	--

# VOR or TACAN RWY 20R

FAIRBANKS INTL (FAI) (PAFA)

DME required. DME required for procedure entry.		MALSR	MISSED APPROACH: Climbing left turn to 4000 on heading 160° and FAI VORTAC R-107 to KRNL/FAI 13 DME and hold, continue climb-in-hold to 4000.
Circling NA west of Rwy 2L-20R. Inop table does not apply. Circling NA to Rwy 2W and 20W. Rwy 20 helicopter visibility reduction below RVR 4000 NA.			

ATIS <b>124.4</b>	FAIRBANKS APP CON <b>125.35 363.2</b>	FAIRBANKS TOWER <b>118.3 257.8</b>	GND CON <b>121.9</b>	CLNC DEL <b>127.6</b>
----------------------	--	---------------------------------------	-------------------------	--------------------------



4000	FAI R-107	KRNL	CENTS FAI 9.5	VGSI and descent angles not coincident (VGSI Angle 3.00/TCH 74).	
hdg 160°				Remain within 15 NM	
	HERIL FAI 7			047°	4000
	ILTAF FAI 5.3		3.26° TCH 74	227°	3300
					2200
					1300
	0.7	0.7	1 NM	2.5 NM	3.5 NM
CATEGORY	A	B	C	D	E
S-20R	940/55	501 (600-1)	940-1 <sup>3</sup> / <sub>8</sub>	501 (600-1 <sup>3</sup> / <sub>8</sub> )	
<b>C</b> CIRCLING	940-1	501 (600-1)	940-1 <sup>1</sup> / <sub>2</sub> 501 (600-1 <sup>1</sup> / <sub>2</sub> )	1020-2 581 (600-2)	1100-2 <sup>1</sup> / <sub>4</sub> 661 (700-2 <sup>1</sup> / <sub>4</sub> )

AK, 07 OCT 2021 to 02 DEC 2021

AK, 07 OCT 2021 to 02 DEC 2021