


# HIGHWAY VISUAL RWY 25R

TED STEVENS ANCHORAGE INTL (ANC) (PANC)

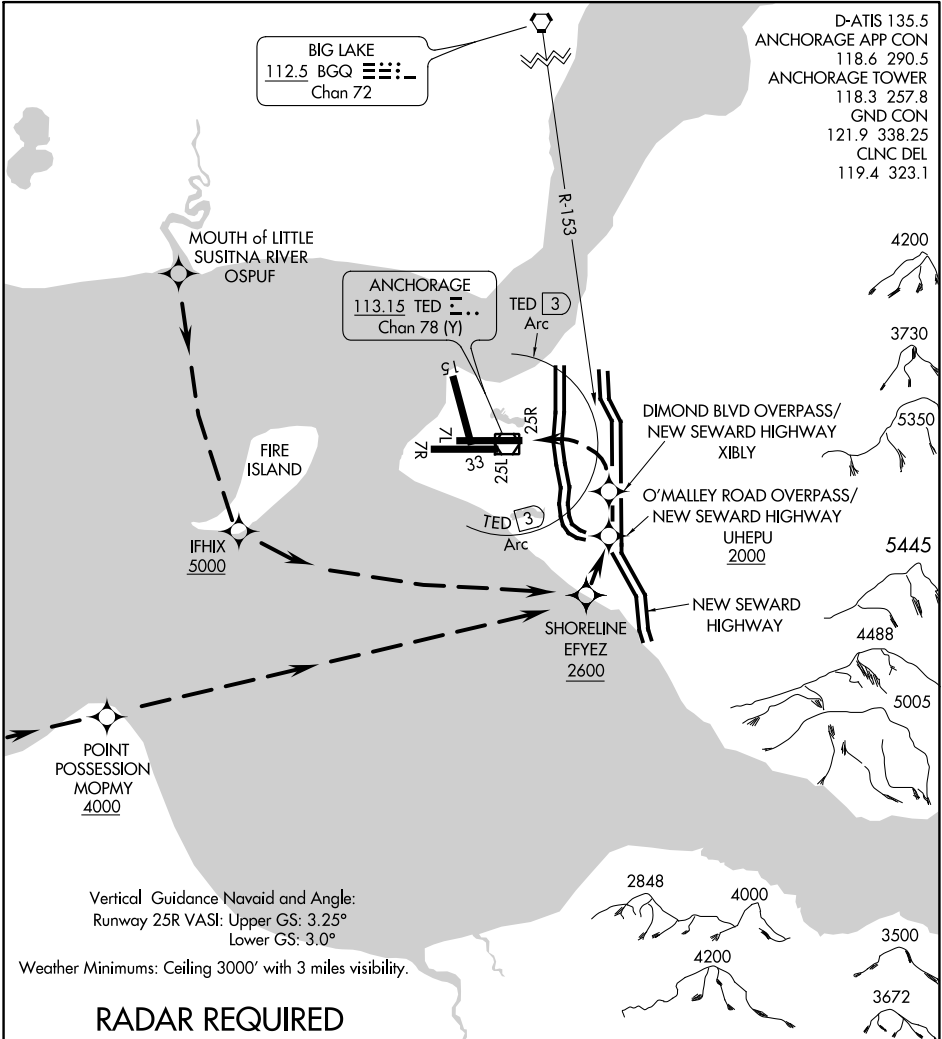
AL-1500 (FAA)

ANCHORAGE, ALASKA

- D-ATIS 135.5
- ANCHORAGE APP CON 118.6 290.5
- ANCHORAGE TOWER 118.3 257.8
- GND CON 121.9 338.25
- CLNC DEL 119.4 323.1

BIG LAKE  
112.5 BGQ   
Chan 72

ANCHORAGE  
113.15 TED   
Chan 78 (Y)



Vertical Guidance Navaid and Angle:  
Runway 25R VASI: Upper GS: 3.25°  
Lower GS: 3.0°  
Weather Minimums: Ceiling 3000' with 3 miles visibility.

## RADAR REQUIRED

NM	1	2	3	4	5	6	7	8	9	10	11	12	13	14	15	16	17	18	19	20	21	22	23	24	25	26
----	---	---	---	---	---	---	---	---	---	----	----	----	----	----	----	----	----	----	----	----	----	----	----	----	----	----

HIGHWAY VISUAL RWY 25R  
PROCEDURE NOT AUTHORIZED AT NIGHT

# HIGHWAY VISUAL RWY 25R

Amdt 1 09FEB12

61°10'N-150°00'W

ANCHORAGE, ALASKA

TED STEVENS ANCHORAGE INTL (ANC) (PANC)

AK, 07 OCT 2021 to 02 DEC 2021

AK, 07 OCT 2021 to 02 DEC 2021