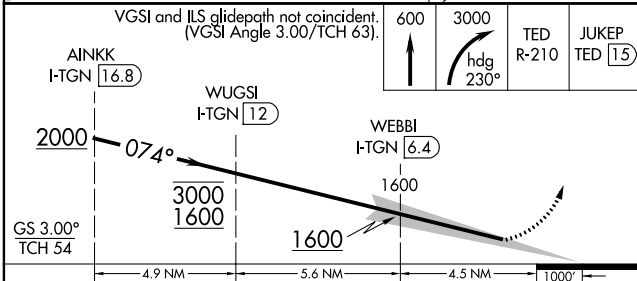
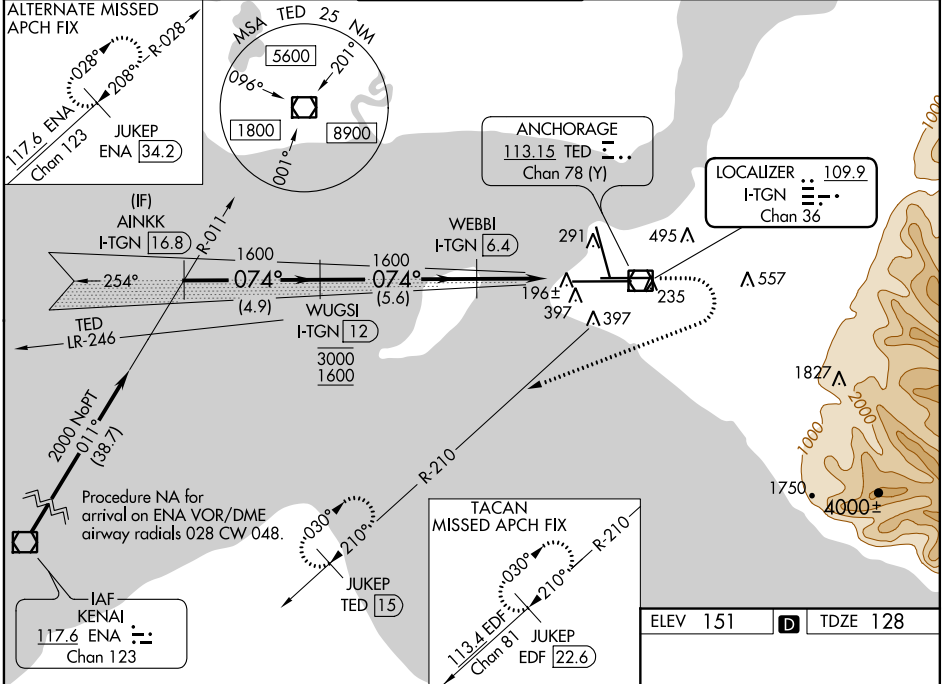


LOC/DME I-TGN <b>109.9</b> Chan <b>36</b>	APP CRS <b>074°</b>	Rwy Idg <b>10600</b> TDZE <b>128</b> Apt Elev <b>151</b>
-------------------------------------------------	------------------------	----------------------------------------------------------------

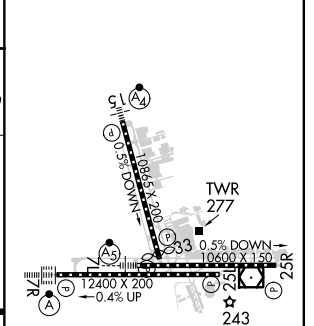
# ILS RWY 7L (SA CAT I & II)

TED STEVENS ANCHORAGE INTL (ANC)(PANC)

DME Required ⚠ SA CAT I: Requires specific OPSPEC, MSPEC, or LOA approval and use of HUD to DH. ⚠ SA CAT II: Reduced lighting: requires specific OPSPEC, MSPEC, or LOA approval and use of autoland or HUD to touchdown.		MALSR 	MISSED APPROACH: Climb to 600 then climbing right turn to 3000 on heading 230° and TED VOR/DME R-210 to JUKEP/TED 15 DME and hold. (TACAN aircraft climb to 600 then climbing right turn to 3000 on heading 230° on EDF TACAN R-210 to JUKEP/EDF 22.6 DME and hold).		
D-ATIS <b>135.5</b>	ANCHORAGE APP CON <b>118.6 290.5</b>	ANCHORAGE TOWER <b>118.3 257.8</b>	GND CON <b>121.9 338.25</b>	CLNC DEL <b>119.4 323.1</b>	



ELEV 151	<b>D</b>	TDZE 128
----------	----------	----------



CATEGORY	A	B	C	D
S-ILS 7L	SA CAT I RA 158/14 150 DA 278			
S-ILS 7L	SA CAT II RA 108/12 100 DA 228			

## SA CATEGORY I & II ILS - SPECIAL AIRCREW & AIRCRAFT CERTIFICATION REQUIRED

REIL Rwy 33  
 TDZ/CL Rwys 7L and 7R  
 HIRL all Rwys

AK, 07 OCT 2021 to 02 DEC 2021

AK, 07 OCT 2021 to 02 DEC 2021