

LOC/DME I-ANC 111.3 Chan 50	APP CRS 074°	Rwy Idg 12400 TDZE 132 Apt Elev 151
--	------------------------	--

ILS RWY 7R (SA CAT I)

TED STEVENS ANCHORAGE INTL (ANC) (PANC)

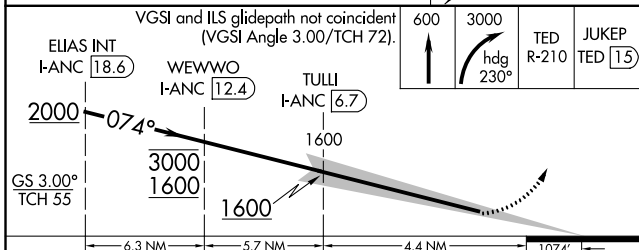
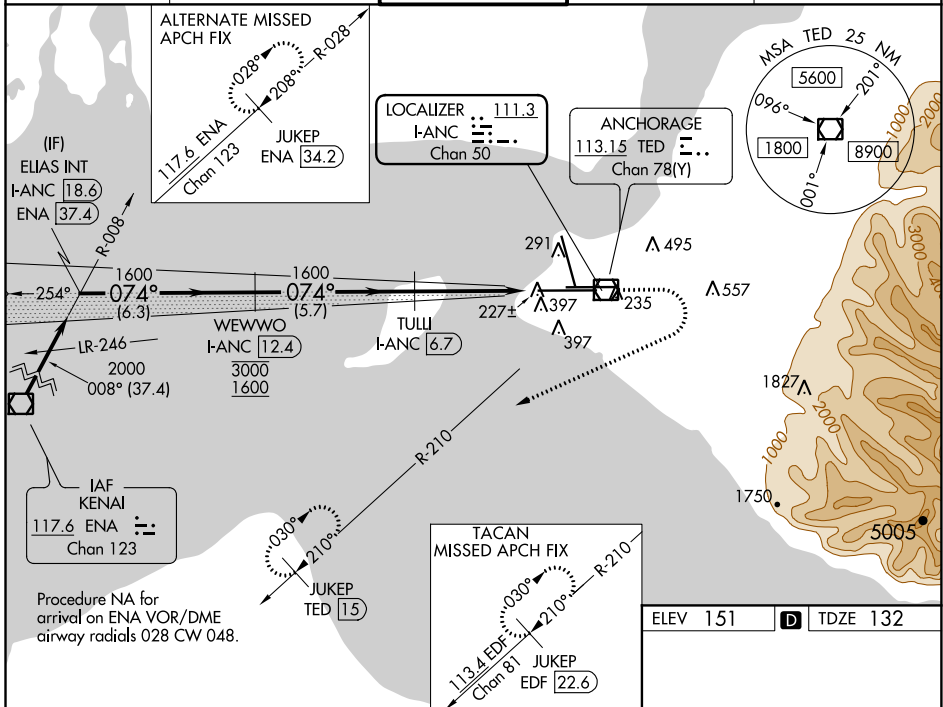
DME required.

⚠ Rwy 7L threshold 6140 feet east of Rwy 7R threshold. Requires specific OPSPEC, MSPEC, or LOA approval and use of HUD to DH.

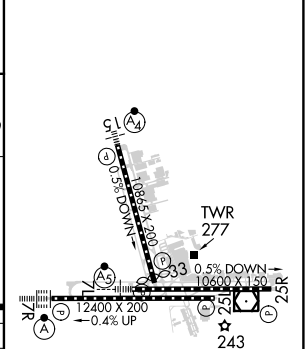
ALSIF-2

MISSED APPROACH: Climb to 600 then climbing right turn to 3000 on heading 230° TED VOR/DME R-210 to JUKEP/TED 15 DME and hold. (TACAN aircraft climb to 600 then climbing right turn to 3000 on heading 230° and EDF TACAN R-210 to JUKEP/EDF 22.6 DME and hold).

D-ATIS 135.5	ANCHORAGE APP CON 118.6 290.5	ANCHORAGE TOWER 118.3 257.8	GND CON 121.9 338.25	CLNC DEL 119.4 323.1
------------------------	---	---------------------------------------	--------------------------------	--------------------------------



ELEV 151	D TDZE 132
----------	-------------------



CATEGORY	A	B	C	D
S-ILS 7R	RA 245/14 150 DA 282			

SA CATEGORY I ILS - SPECIAL AIRCREW & AIRCRAFT CERTIFICATION REQUIRED

REIL Rwy 33
TDZ/CL Rwy 7L and 7R
HIRL all Rwy

AK, 07 OCT 2021 to 02 DEC 2021

AK, 07 OCT 2021 to 02 DEC 2021