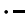



# KNIK THREE DEPARTURE


TED STEVENS ANCHORAGE INTL (ANC) (PANC)  
AL-1500 (FAA) ANCHORAGE, ALASKA


**TOP ALTITUDE:  
FL200**

D-ATIS 135.5  
CLNC DEL 119.4 323.1  
GND CON 121.9 338.25  
ANCHORAGE TOWER 118.3 257.8  
ANCHORAGE DEP CON 118.6 290.5

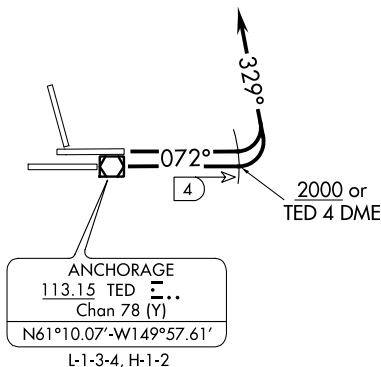
TALKEETNA  
116.2 TKA   
Chan 109  
N62°17.90'-W150°06.32'  
L-3-4, H-1-2



BIG LAKE  
112.5 BGQ   
Chan 72  
N61°34.17'-W149°58.03'  
L-1-3-4, H-1-2



△ NODLE  
N61°17.00'  
W152°00.00'  
13700  
H-1-2



NOTE: RADAR required.  
NOTE: Aircraft cleared via NODLE FIX  
cross at or above 13700 for terrain.

### TAKEOFF MINIMUMS

Rwys 15, 25L/R, 33: NA-ATC.  
Rwy 7L: Standard with minimum climb of 253' per NM to 400.  
Rwy 7R: Standard with minimum climb of 285' per NM to 400.

NOTE: Chart not to scale.

### DEPARTURE ROUTE DESCRIPTION

TAKEOFF RUNWAYS 7L/R: Climb heading 072° to 2000 or TED 4 DME, whichever comes first, then climbing left turn heading 329° for vectors to assigned route or fix. Maintain FL200 or assigned altitude, expect filed altitude 10 minutes after departure.

All aircraft, climb as rapidly as practical through 3000, if unable to reach 2000 by TED 4 DME advise ATC prior to departure.

# KNIK THREE DEPARTURE