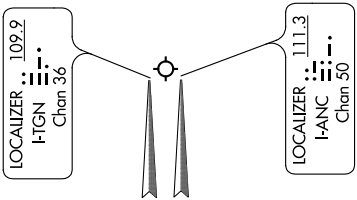
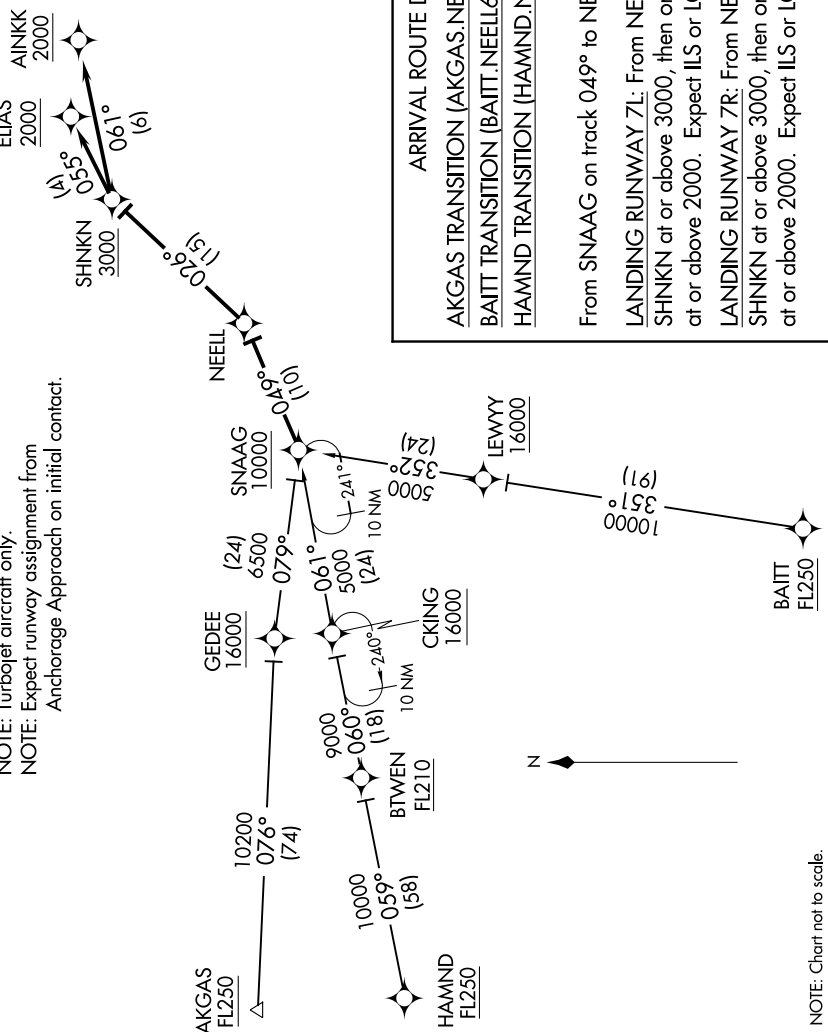


NEELL SIX ARRIVAL (RNAV)

AK, 07 OCT 2021 to 02 DEC 2021

ANCHORAGE APP CON
126.4 270.25
D-ATIS
135.5

- NOTE: RNAV 1.
- NOTE: GPS required.
- NOTE: Turbojet aircraft only.
- NOTE: Expect runway assignment from Anchorage Approach on initial contact.



ARRIVAL ROUTE DESCRIPTION

AKGAS TRANSITION (AKGAS.NEELL6)
BAITT TRANSITION (BAITT.NEELL6)
HAMND TRANSITION (HAMND.NEELL6)

From SNAAG on track 049° to NEELL.

LANDING RUNWAY 7L: From NEELL on track 026° to cross SHNKN at or above 3000, then on track 061° to cross AINKK at or above 2000. Expect ILS or LOC/DME RWY 7L approach.

LANDING RUNWAY 7R: From NEELL on track 026° to cross SHNKN at or above 3000, then on track 055° to cross ELIAS at or above 2000. Expect ILS or LOC/DME RWY 7R approach.

NOTE: Chart not to scale.

AK, 07 OCT 2021 to 02 DEC 2021

NEELL SIX ARRIVAL (RNAV)