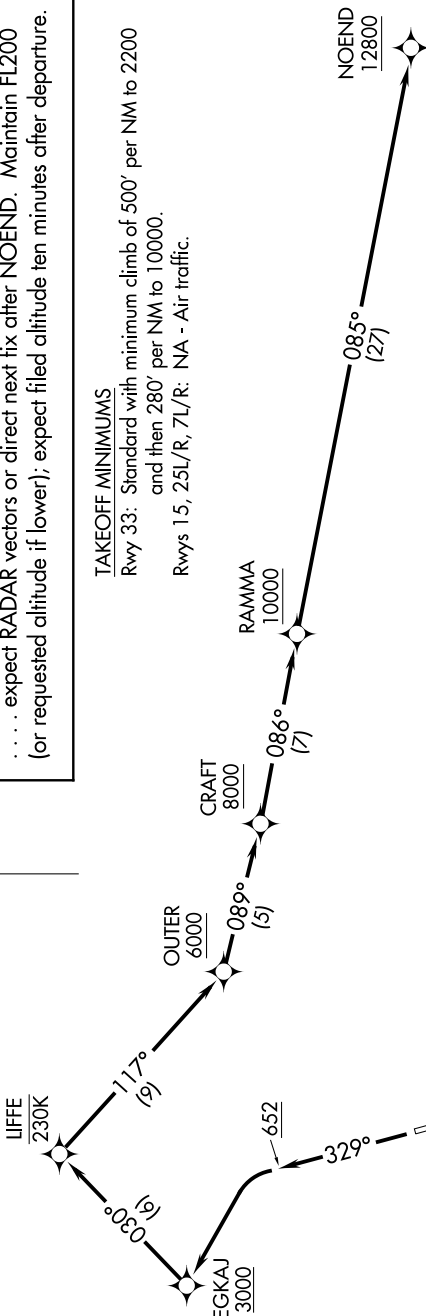


AK, 07 OCT 2021 to 02 DEC 2021

TOP ALTITUDE:
FL200

- D-ATIS 135.5
- CINC DEL 119.4 323.1
- GND CON 121.9 338.25
- ANCHORAGE TOWER 118.3 257.8
- ANCHORAGE DEP CON 118.6 290.5



DEPARTURE ROUTE DESCRIPTION

TAKEOFF RUNWAY 33: Climb heading 329° to 652, then left turn direct to cross EGKAJ at or above 3000, then on track 030° to LIFFE, then on track 117° to cross OUTER at or above 6000, then on track 089° to cross CRAFT at or above 8000, then on track 086° to cross RAMMA at or above 10000, then on track 085° to cross NOEND at or above 12800 thence

. expect RADAR vectors or direct next fix after NOEND. Maintain FL200 (or requested altitude if lower); expect filed altitude ten minutes after departure.

TAKEOFF MINIMUMS

Rwy 33: Standard with minimum climb of 500' per NM to 2200 and then 280' per NM to 10000.
Rwys 15, 25L/R, 7L/R: NA - Air traffic.

- NOTE: GPS required.
- NOTE: RNAV-1.
- NOTE: RADAR required.
- NOTE: Do not exceed 230K until passing LIFFE.

NOTE: Chart not to scale.

AK, 07 OCT 2021 to 02 DEC 2021