

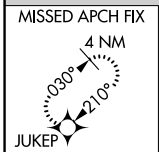
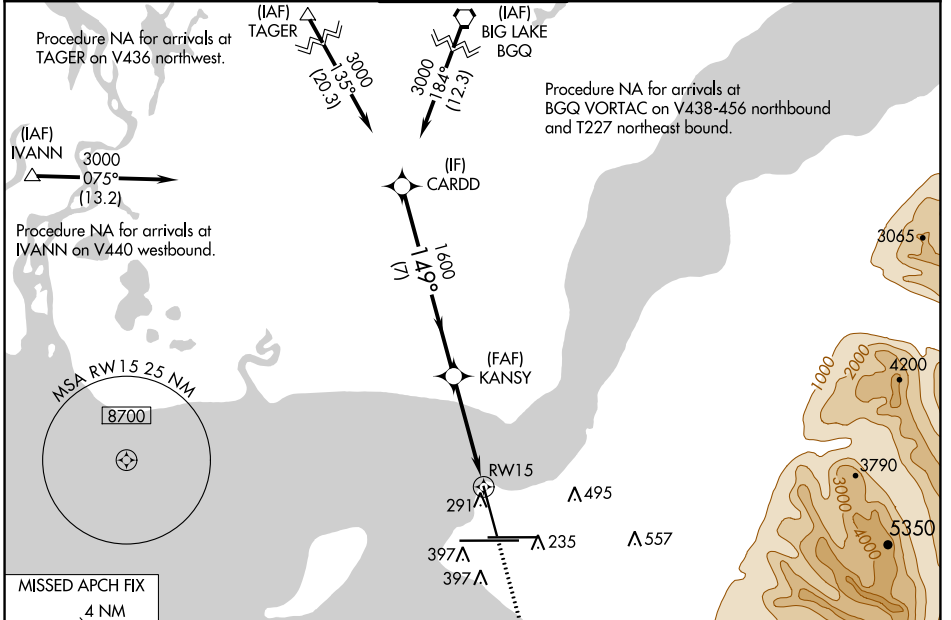
WAAS CH <b>90115</b> <b>W15A</b>	APP CRS <b>149°</b>	Rwy Idg <b>10000</b> TDZE <b>151</b> Apt Elev <b>151</b>
--	------------------------	--

# RNAV (GPS) RWY 15

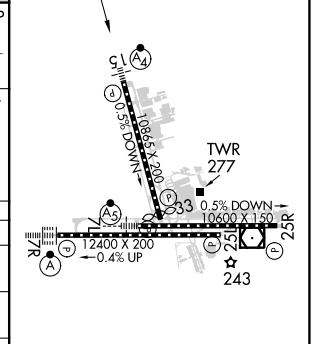
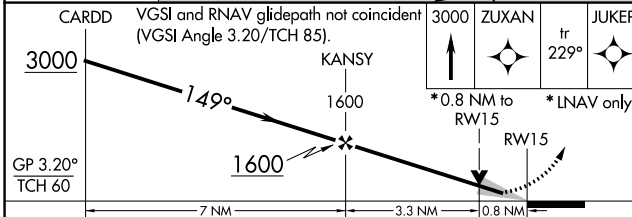
TED STEVENS ANCHORAGE INTL (ANC) (PANC)

RNP APCH. Inop table does not apply to LPV, LNAV/VNAV. For uncompensated Baro-VNAV systems, LNAV/VNAV NA below -21°C or above 54°C. For inop ALS, increase LNAV Cat C/D visibility to 1½ SM.	MALSF 	MISSED APPROACH: Climb to 3000 direct ZUXAN and on track 229° to JUKEP and hold.
---	-----------	--

D-ATIS <b>135.5</b>	ANCHORAGE APP CON <b>118.6 290.5</b>	ANCHORAGE TOWER <b>118.3 257.8</b>	GND CON <b>121.9 338.25</b>	CLNC DEL <b>119.4 323.1</b>
------------------------	---	---------------------------------------	--------------------------------	--------------------------------



ELEV 151	TDZE 151
----------	----------



CATEGORY	A	B	C	D
LPV DA	351/40	200 (200-¾)	401/40	250 (300-¾)
LNAV/VNAV DA	404/40		253 (300-¾)	
LNAV MDA	600/40	449 (500-¾)	600/60	449 (500-1¼)
CIRCLING	700-1	549 (600-1)	800-1¾ 649 (700-1¾)	920-2½ 769 (800-2½)

REIL Rwy 33  
TDZ/CL Rws 7L and 7R  
HIRL all Rws

AK, 07 OCT 2021 to 02 DEC 2021

AK, 07 OCT 2021 to 02 DEC 2021