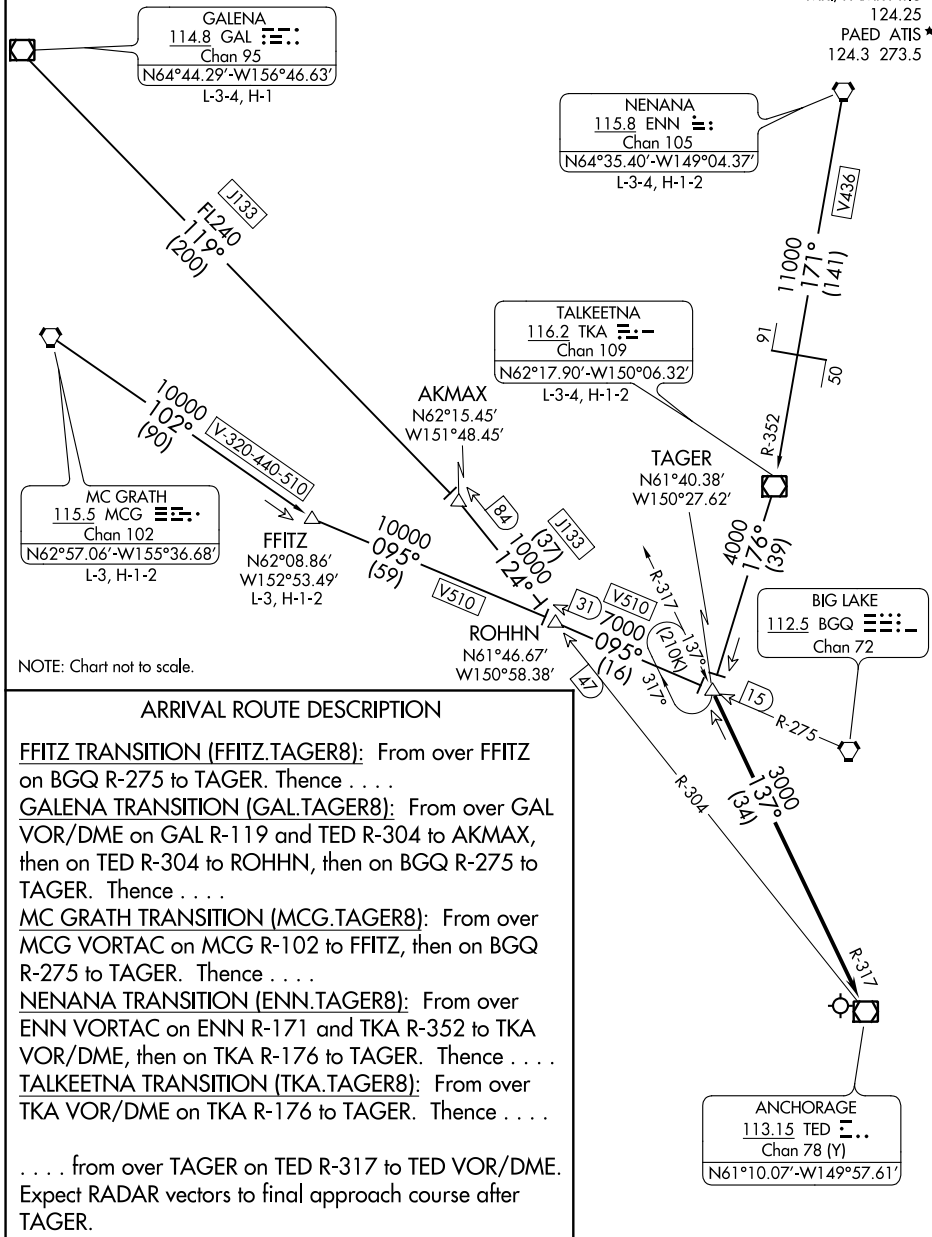


NOTE: DME required.

ANCHORAGE APP CON
 118.6 290.5
 ANC/PANC D-ATIS
 135.5
 MRI/PAMR ATIS
 124.25
 PAED ATIS*
 124.3 273.5



NOTE: Chart not to scale.

ARRIVAL ROUTE DESCRIPTION

FFITZ TRANSITION (FFITZ.TAGER8): From over FFITZ on BGQ R-275 to TAGER. Thence

GALENA TRANSITION (GAL.TAGER8): From over GAL VOR/DME on GAL R-119 and TED R-304 to AKMAX, then on TED R-304 to ROHHN, then on BGQ R-275 to TAGER. Thence

MC GRATH TRANSITION (MCG.TAGER8): From over MCG VORTAC on MCG R-102 to FFITZ, then on BGQ R-275 to TAGER. Thence

NENANA TRANSITION (ENN.TAGER8): From over ENN VORTAC on ENN R-171 and TKA R-352 to TKA VOR/DME, then on TKA R-176 to TAGER. Thence

TALKHEETNA TRANSITION (TKA.TAGER8): From over TKA VOR/DME on TKA R-176 to TAGER. Thence

. . . . from over TAGER on TED R-317 to TED VOR/DME. Expect RADAR vectors to final approach course after TAGER.

AK, 07 OCT 2021 to 02 DEC 2021

AK, 07 OCT 2021 to 02 DEC 2021