


WAAS CH 42707 W01A	APP CRS 012°	Rwy Idg 6400 TDZE 127 Apt Elev 129
--	------------------------	---

RNAV (GPS) RWY 1L

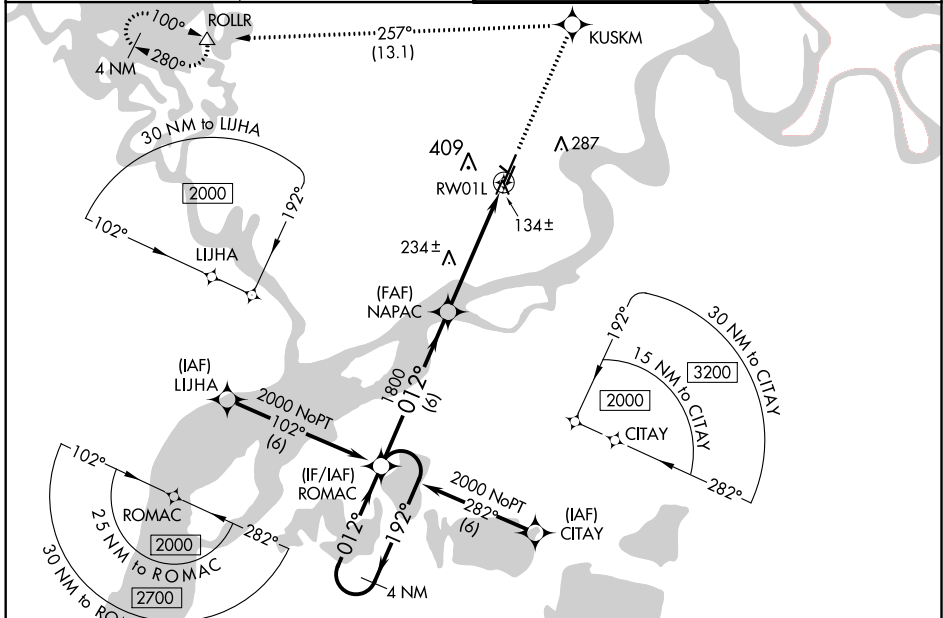
BETHEL (BET)(PABE)

▽ For uncompensated Baro-VNAV systems, LNAV/VNAV NA below -25°C (-13°F) or above 54°C (130°F).
Circling NA west of Rwy 1L-19R. DME/DME RNP-0.3 NA.
For inop ALS, increase LNAV Cat C/D visibility to RVR 6000.

MALSR 

MISSED APPROACH: Climb to 2000 direct KUSKM and left turn on track 257° to ROLLR and hold.

ATIS 119.8	ANCHORAGE CENTER 125.2 372.0	BETHEL TOWER ★ 118.7 (CTAF) 0	GND CON 121.7
----------------------	--	---	-------------------------



VGSI and RNAV glidepath not coincident (VGSI Angle 3.00/TCH 39).

4 NM Holding Pattern ROMAC

2000 KUSKM ROLLR

GP 3.00° TCH 47

1800 NAPAC

1800 RWY 1L

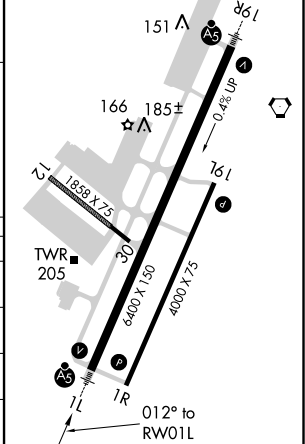
6 NM 3.9 NM 1.1 NM

*1.1 NM to RWY 1L

*LNAV only

ELEV 129	TDZE 127
----------	----------

HIRL Rwsy 1L-19R, 1R-19L and 12-30
REIL Rwy 1R and 19L



CATEGORY	A	B	C	D
LPV DA		377/24	250 (300-½)	
LNAV/VNAV DA		555/50	428 (500-1)	
LNAV MDA	500/24	373 (400-½)	500/50	373 (400-1)
CIRCLING	500-1	600-1	600-1½	680-2
	371 (400-1)	471 (500-1)	471 (500-1½)	551 (600-2)

AK, 07 OCT 2021 to 02 DEC 2021

AK, 07 OCT 2021 to 02 DEC 2021