

AIRPORT DIAGRAM

AL-5240 (FAA)

UNIVERSITY PARK (UNV)
STATE COLLEGE, PENNSYLVANIA

D-ATIS
127.65
UNIVERSITY PARK ★
128.475
GND CON
119.625
CLNC DEL
119.625
118.55 (When Tower Closed)

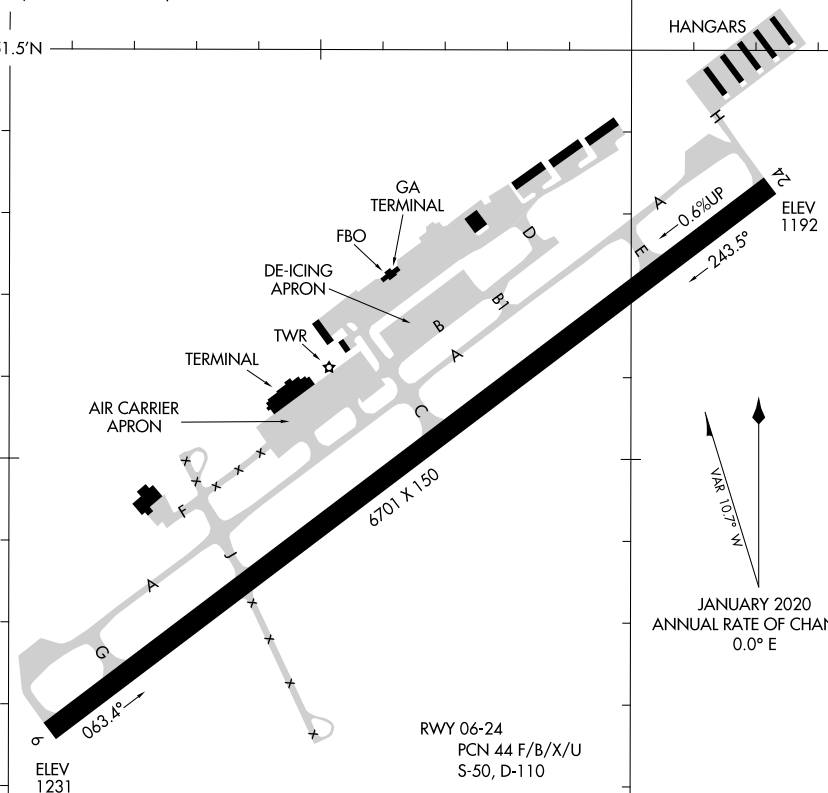
D

FIELD ELEV 1231

40°51.5'N

HANGARS

NE-4, 07 OCT 2021 to 04 NOV 2021



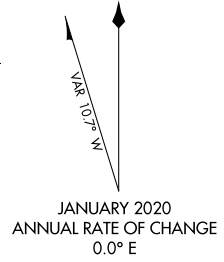
0.6% UP

243.5°

6701 X 150

ELEV 1231

RWY 06-24
PCN 44 F/B/X/U
S-50, D-110



40°50.5'N

CAUTION: BE ALERT TO RUNWAY CROSSING CLEARANCES.
READBACK OF ALL RUNWAY HOLDING INSTRUCTIONS IS REQUIRED.

77°51.5'W

77°50.5'W

NE-4, 07 OCT 2021 to 04 NOV 2021

AIRPORT DIAGRAM

STATE COLLEGE, PENNSYLVANIA
UNIVERSITY PARK (UNV)