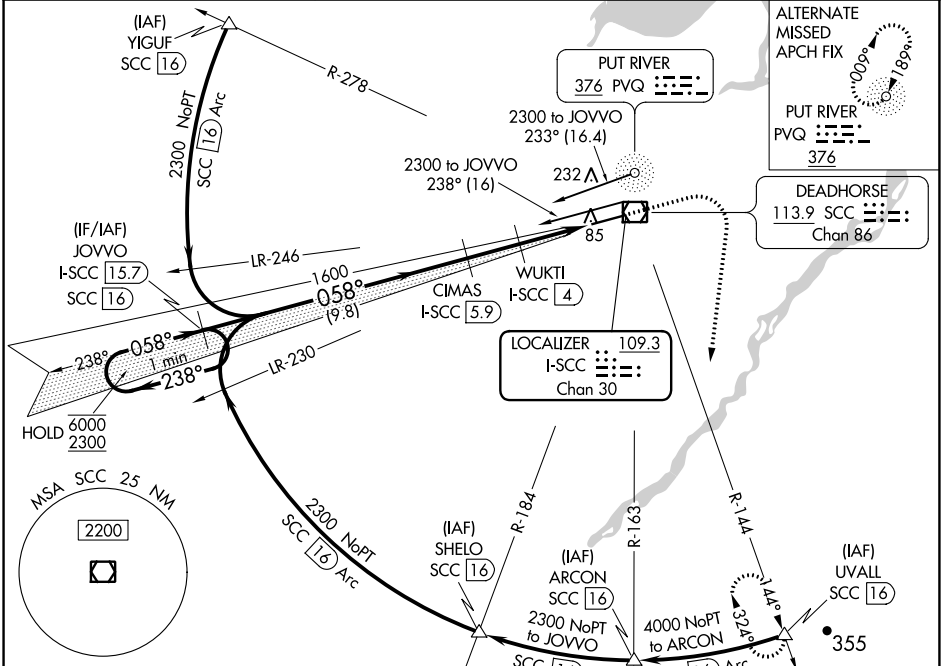


LOC/DME I-SCC <b>109.3</b> Chan <b>30</b>	APP CRS <b>058°</b>	Rwy Idg <b>6500</b> TDZE <b>67</b> Apt Elev <b>67</b>
---	------------------------	---

# ILS or LOC RWY 6 DEADHORSE (SCC) (PASC)

DME required. ▼ For inop ALS, increase S-ILS 6 Cat E visibility to RVR 4000 and ▲ S-LOC 6 Cats C/D/E to RVR 4500. #RVR 1800 authorized with use of FD or AP or HUD to DA.	MALSR 	MISSED APPROACH: Climb to 1500 then climbing right turn to 4000 on heading 170° and SCC VOR/DME R-144 to UVALL/SCC 16 DME and hold.
--	-----------	---

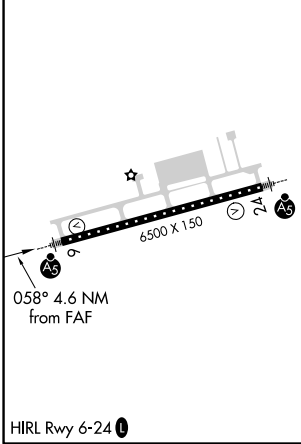
AFIS <b>118.4</b>	ANCHORAGE CENTER <b>134.4 370.9</b>	DEADHORSE RADIO <b>123.6 (CTAF) 0</b>
----------------------	--	--



AK, 07 OCT 2021 to 02 DEC 2021

AK, 07 OCT 2021 to 02 DEC 2021

ELEV 67	<b>D</b>	TDZE 67
---------	----------	---------



Use I-SCC DME when on the localizer course. VGSI and ILS glidepath not coincident (VGSI Angle 3.00/TCH 50).		1500	4000	SCC	UVALL
One Minute Holding Pattern				R-144	△
JOVVO I-SCC 15.7		CIMAS I-SCC 5.9		*LOC only	
6000 ← 238°		1600		*I-SCC 2	
2300 → 058°		1600		I-SCC 1.3	
GS 3.00° TCH 58		*980			
		9.8 NM		1.9 NM	
		2 NM		0.8 NM	
CATEGORY	A	B	C	D	E
S-ILS 6#	267/24 200 (200-1/2)				
S-LOC 6	360/24 293 (300-1/2)				
<b>C</b> CIRCLING	540-1	473 (500-1)	580-1 1/2 513 (600-1 1/2)	620-2	553 (600-2)