

LOC/DME I-SCC <b>109.3</b> Chan 30	APP CRS <b>238°</b>	Rwy Idg TDZE <b>66</b> Apt Elev <b>67</b>
--	------------------------	---

# LOC BC RWY 24

DEADHORSE (SCC) (PASC)

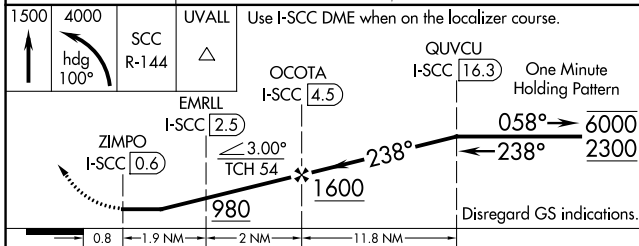
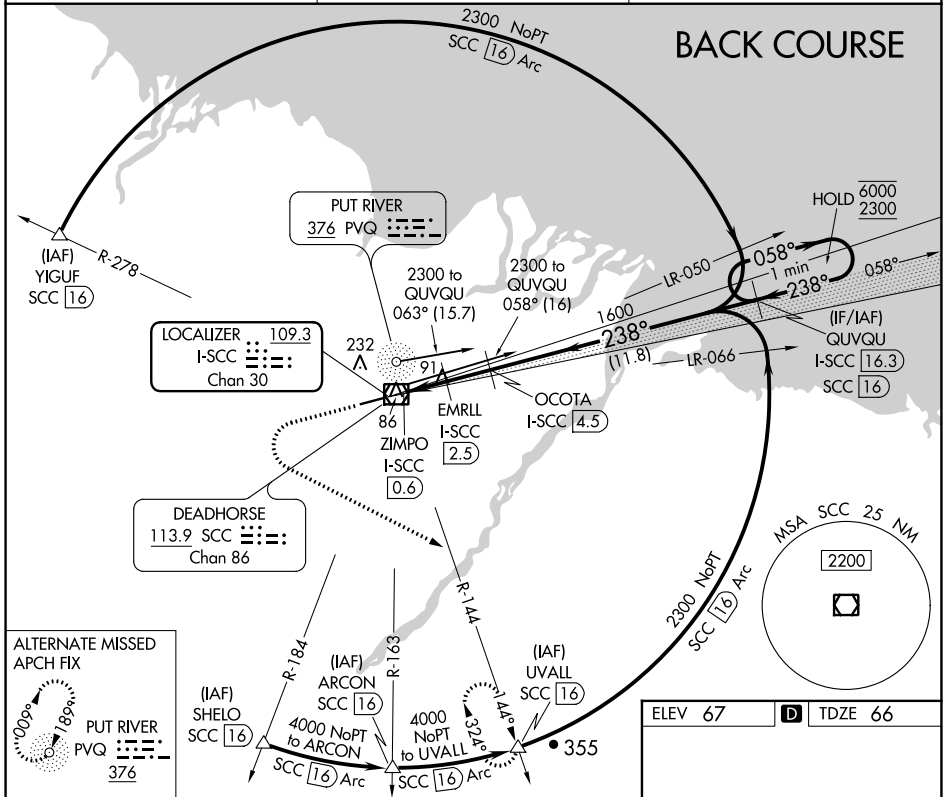
DME required.

**▲** For inop ALS, increase S-24 Cat E visibility to RVR 5000.

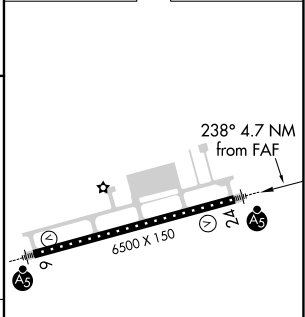
MALSR

MISSED APPROACH: Climb to 1500 then climbing left turn to 4000 on heading 100° and SCC VOR/DME R-144 to UVALL/SCC VOR/DME 16 DME and hold.

AFIS <b>118.4</b>	ANCHORAGE CENTER <b>134.4 370.9</b>	DEADHORSE RADIO <b>123.6 (CTAF) 0</b>
----------------------	--	--



ELEV 67	<b>D</b> TDZE 66
---------	------------------



CATEGORY	A	B	C	D	E
S-24	340/24 274 (300-½)				
<b>C</b> CIRCLING	540-1 473 (500-1)	580-1½ 513 (600-1½)	620-2 553 (600-2)		

HIRL Rwy 6-24 **0**

AK, 07 OCT 2021 to 02 DEC 2021

AK, 07 OCT 2021 to 02 DEC 2021