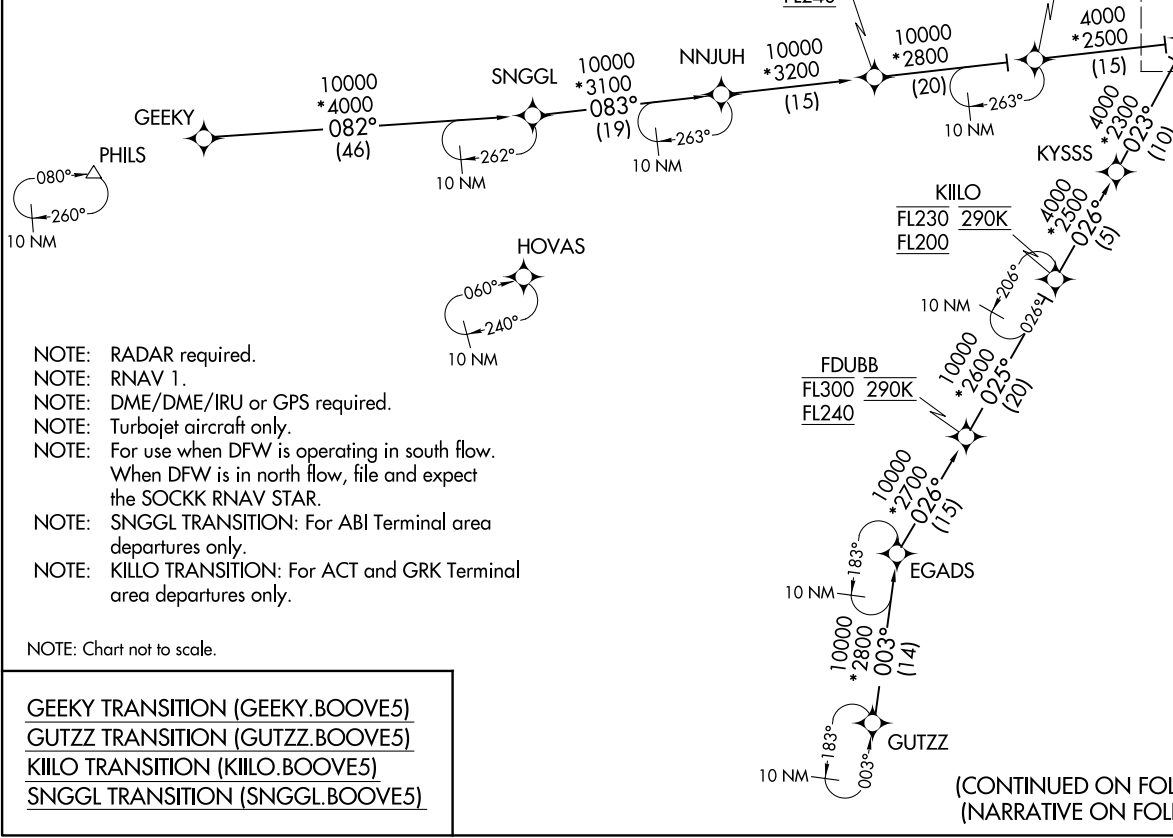


(BOOVE.BOOVE5) 22APR21

BOOVE FIVE ARRIVAL (RNAV) Transition Routes

DALLAS-FORT WORTH, TEXAS
DALLAS-FORT WORTH INTL (DFW)

D-ATIS ARR
123.775
REGIONAL APP CON
119.875 133.625 284.65



See following page for Arrival Route.

- NOTE: RADAR required.
- NOTE: RNAV 1.
- NOTE: DME/DME/IRU or GPS required.
- NOTE: Turbojet aircraft only.
- NOTE: For use when DFW is operating in south flow. When DFW is in north flow, file and expect the SOCKK RNAV STAR.
- NOTE: SNGGL TRANSITION: For ABI Terminal area departures only.
- NOTE: KIILO TRANSITION: For ACT and GRK Terminal area departures only.

NOTE: Chart not to scale.

- GEEKY TRANSITION (GEEKY.BOOVE5)
- GUTZZ TRANSITION (GUTZZ.BOOVE5)
- KIILO TRANSITION (KIILO.BOOVE5)
- SNGGL TRANSITION (SNGGL.BOOVE5)

(CONTINUED ON FOLLOWING PAGE)
(NARRATIVE ON FOLLOWING PAGE)

(BOOVE.BOOVE5) 21112

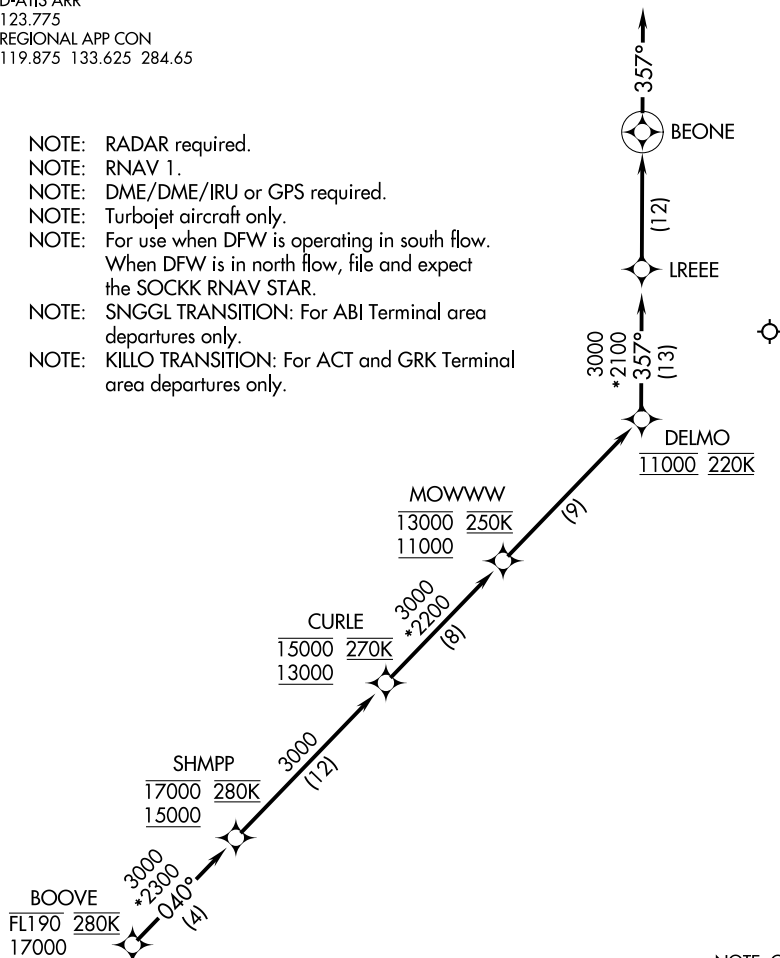
AL-6039 (FAA)

DALLAS-FORT WORTH INTL (DFW)
DALLAS-FORT WORTH, TEXAS

BOOVE FIVE ARRIVAL (RNAV) Arrival Route

D-ATIS ARR
123.775
REGIONAL APP CON
119.875 133.625 284.65

- NOTE: RADAR required.
- NOTE: RNAV 1.
- NOTE: DME/DME/IRU or GPS required.
- NOTE: Turbojet aircraft only.
- NOTE: For use when DFW is operating in south flow. When DFW is in north flow, file and expect the SOCKK RNAV STAR.
- NOTE: SNGGL TRANSITION: For ABI Terminal area departures only.
- NOTE: KILLO TRANSITION: For ACT and GRK Terminal area departures only.



NOTE: Chart not to scale.

ARRIVAL ROUTE DESCRIPTION

From BOOVE on track 040° to cross SHMPP between 15000 and 17000 and at 280K, then on track 040° to cross CURLE between 13000 and 15000 and at 270K, then on track 040° to cross MOWWW between 11000 and 13000 and at 250K, then on track 040° to cross DELMO at 11000 and at 220K, then on track 357° to LREEE, then on track 357° to BEONE, then on track 357°. Expect RADAR vectors to final approach course.

SC-2, 07 OCT 2021 to 04 NOV 2021

SC-2, 07 OCT 2021 to 04 NOV 2021