

BOWIE FIVE ARRIVAL
(UKW, UKW5) 25APR19
Transition Routes
DALLAS-FORT WORTH, TEXAS
(DFW)

D-ATIS ARR
123.775
REGIONAL APP CON
119.87 284.65

NOTE: RADAR required.

BORGER
108.6 BGD
Chan 23
N35°48.42'
W101°22.93'
L-15, H-6

WILL ROGERS
114.1 IRW
Chan 88
N35°21.52'-W97°36.55'
L-15, H-6

TULSA
114.4 TUL
Chan 91
N36°11.78'
W95°47.29'
L-15, H-6

PANHANDLE
116.6 PNH
Chan 113
N35°14.10'
W101°41.94'
L-15, H-6

HEATR
N34°49.47'
W99°50.94'

WICHITA FALLS
112.7 SPS
Chan 74
N33°59.24'
W98°35.61'
(L-17, H-6)

LAWTON
109.4 LAW
Chan 31

IMPCO
N34°54.24'
W96°56.86'

CHILDRESS
117.0 CDS
Chan 117

MOOSE
N34°18.88'
W97°27.65'

ARDMORE
116.7 ADM
Chan 114

TEXICO
112.2 TXO
Chan 59
N34°29.71'
W102°50.38'
L-6, H-6

TURKI
N34°18.06'
W101°03.65'

GANJA
N34°12.25'
W100°15.27'

ZANTO
N33°59.73'
W99°28.28'

KAJAY
N33°48.16'
W98°46.04'

PLEBS
N33°41.49'
W98°22.16'

DOPEY
N33°36.85'
W97°57.25'

ACKME
N33°50.85'
W97°40.67'

MASTY
N33°43.14'
W97°44.33'

ABILENE
113.7 ABI
Chan 84

MILLSAP
117.7 MQP
Chan 124

BOWIE
117.15 UKW
Chan 118 (Y)
N33°32.15'
W97°49.28'

COWBOY
116.2 CVE
Chan 109



(CONTINUED ON FOLLOWING PAGE)

See following page for arrival route.

NOTE: Chart not to scale.

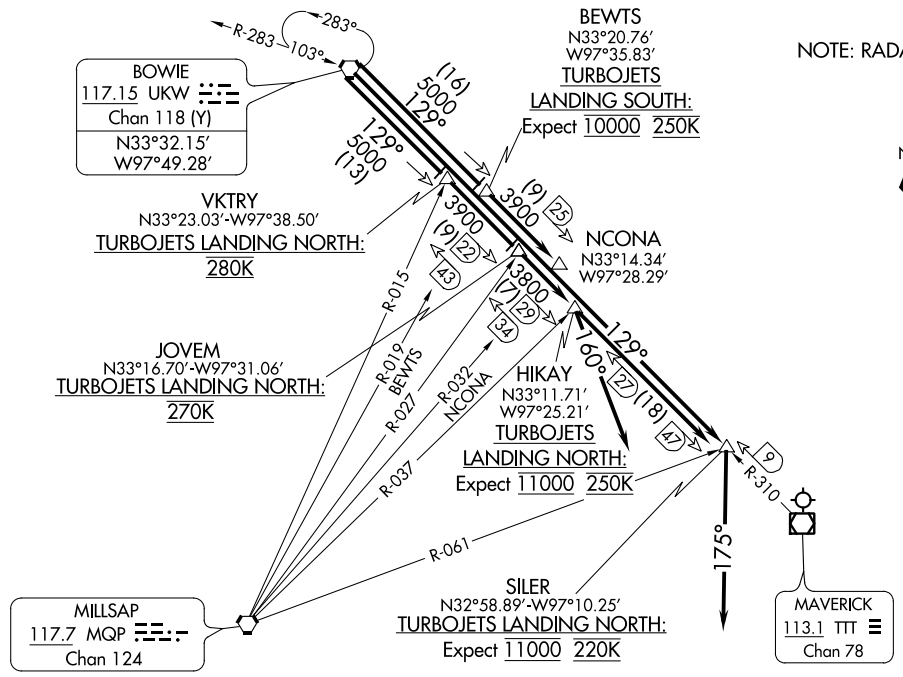
(UKW, UKW5) 20198
AL-6039 (FAA)
Transition Routes
DALLAS-FORT WORTH INTL (DFW)
DALLAS-FORT WORTH, TEXAS

BOWIE FIVE ARRIVAL
(UKW, UKW5) 25ARR19

Arrival Routes

DALLAS-FORT WORTH, TEXAS
DALLAS-FORT WORTH INTL (DFW)

D-ATIS ARR
123.775
REGIONAL APP CON
119.87 284.65



NOTE: RADAR required.

BOWIE FIVE ARRIVAL
(UKW, UKW5) 21168

Arrival Routes
AL-6039 (FAA)

DALLAS-FORT WORTH INTL (DFW)
DALLAS-FORT WORTH, TEXAS

MAVERICK
113.1 TTT
Chan 78

(NARRATIVE ON FOLLOWING PAGE)

NOTE: Chart not to scale.

BOWIE FIVE ARRIVAL

ARRIVAL ROUTE DESCRIPTION

BORGER TRANSITION (BGD.UKW5): From over BGD VORTAC on BGD R-117 to HEATR, then on SPS R-299 to SPS VORTAC, then on SPS R-115 to HUNKI, then on UKW R-299 to UKW VORTAC. Thence

PANHANDLE TRANSITION (PNH.UKW5): From over PNH VORTAC on PNH R-097 to HEATR, then on SPS R-299 to SPS VORTAC, then on SPS R-115 to HUNKI, then on UKW R-299 to UKW VORTAC. Thence

TEXICO TRANSITION (TXO.UKW5): From over TXO VORTAC on TXO R-086 to GANJA, then on UKW R-283 to UKW VORTAC. Thence

TULSA TRANSITION (TUL.UKW5): From over TUL VORTAC on TUL R-209 to MOOSE, then on UKW R-015 to UKW VORTAC. Thence

TURKI TRANSITION (TURKI.UKW5): From over TURKI on TXO R-086 to GANJA, then on UKW R-283 to UKW VORTAC. Thence

WICHITA FALLS TRANSITION (SPS.UKW5): From over SPS VORTAC on SPS R-115 to HUNKI, then on UKW R-299 to UKW VORTAC. Thence

WILL ROGERS TRANSITION (IRW.UKW5): From over IRW VORTAC on IRW R-166 to MOOSE, then on UKW R-015 to UKW VORTAC. Thence

. . . . ALL AIRCRAFT: From over UKW on UKW R-129 and TTT R-310. Thence

. . . . TURBOJETS LANDING SOUTH: UKW to BEWTS, to NCONA, expect RADAR vectors to final approach course.

. . . . TURBOJETS LANDING NORTH: UKW to VKTRY, to JOVEM, to HIKAY, to SILER depart heading 175°, expect RADAR vectors to final approach course.

. . . . PROPS LANDING SOUTH: UKW to VKTRY, to JOVEM, to HIKAY, expect RADAR vectors to final approach course.

. . . . PROPS LANDING NORTH: UKW to VKTRY, to JOVEM, to HIKAY depart heading 160°, expect RADAR vectors to final approach course.

SC-2, 07 OCT 2021 to 04 NOV 2021

SC-2, 07 OCT 2021 to 04 NOV 2021