

BRDJE THREE ARRIVAL (RNAV) Transition Routes

D-ATIS ARR
123.775
REGIONAL APP CON
125.025 263.025

- NOTE: RADAR required.
- NOTE: RNAV 1.
- NOTE: DME/DME/IRU or GPS required.
- NOTE: Turbojet aircraft only.
- NOTE: For use when DFW is operating in a north flow.
When DFW is in south flow, expect and file the SEEVR RNAV STAR.

AXXEE TRANSITION (AXXEE.BRDJE3):

(for aircraft filing FL230 and below)

CHMLI TRANSITION (CHMLI.BRDJE3):

(ATC assigned only)

FEWWWW TRANSITION (FEWWWW.BRDJE3)

HITUG TRANSITION (HITUG.BRDJE3)

JRHED TRANSITION (JRHED.BRDJE3):

(ATC assigned only)

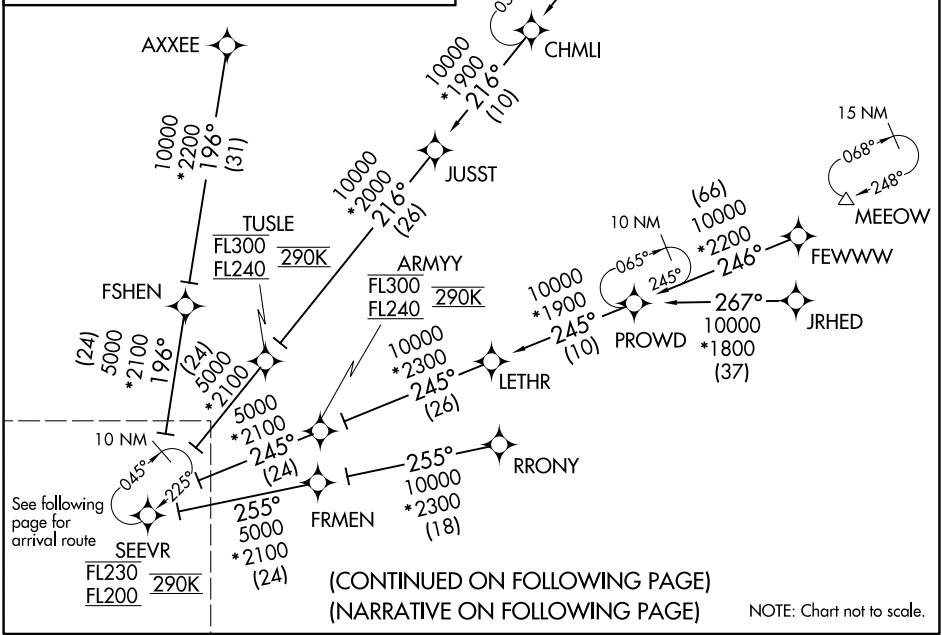
PROWD TRANSITION (PROWD.BRDJE3):

(ATC assigned only)

RRNET TRANSITION (RRNET.BRDJE3)

RRONY TRANSITION (RRONY.BRDJE3):

(for aircraft filing FL230 and below)



(CONTINUED ON FOLLOWING PAGE)
(NARRATIVE ON FOLLOWING PAGE)

NOTE: Chart not to scale.

SC-2, 07 OCT 2021 to 04 NOV 2021

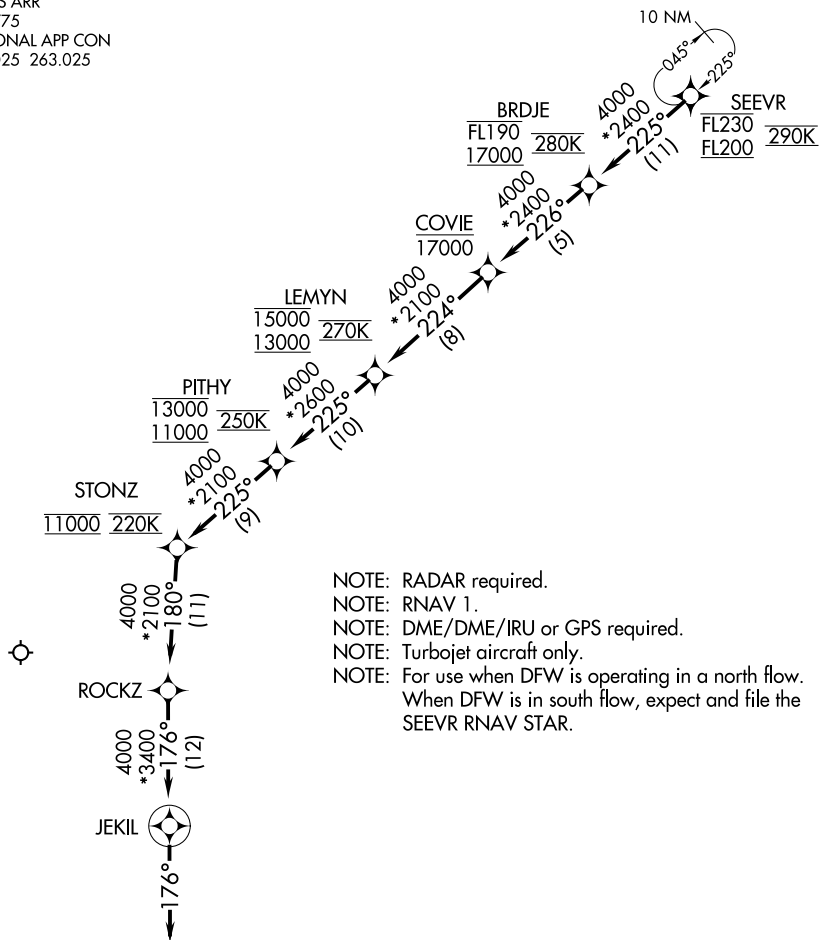
SC-2, 07 OCT 2021 to 04 NOV 2021

BRDJE THREE ARRIVAL (RNAV) Transition Routes

(SEEVR.BRDJE3) 31MART6

BRDJE THREE ARRIVAL (RNAV) Arrival Route

D-ATIS ARR
123.775
REGIONAL APP CON
125.025 263.025



- NOTE: RADAR required.
- NOTE: RNAV 1.
- NOTE: DME/DME/IRU or GPS required.
- NOTE: Turbojet aircraft only.
- NOTE: For use when DFW is operating in a north flow. When DFW is in south flow, expect and file the SEEVR RNAV STAR.

NOTE: Chart not to scale.

ARRIVAL ROUTE DESCRIPTION

From SEEVR on track 225° to cross BRDJE between 17000 and FL190 and at 280K, then on track 226° to cross COVIE at/below 17000, then on track 224° to cross LEMYN between 13000 and 15000 and at 270K, then on track 225° to cross PITHY between 11000 and 13000 and at 250K, then on track 225° to cross STONZ at 11000 and at 220K, then on track 180° to ROCKZ, then on track 176° to JEKIL, then on track 176°. Expect RADAR vectors to final approach course.