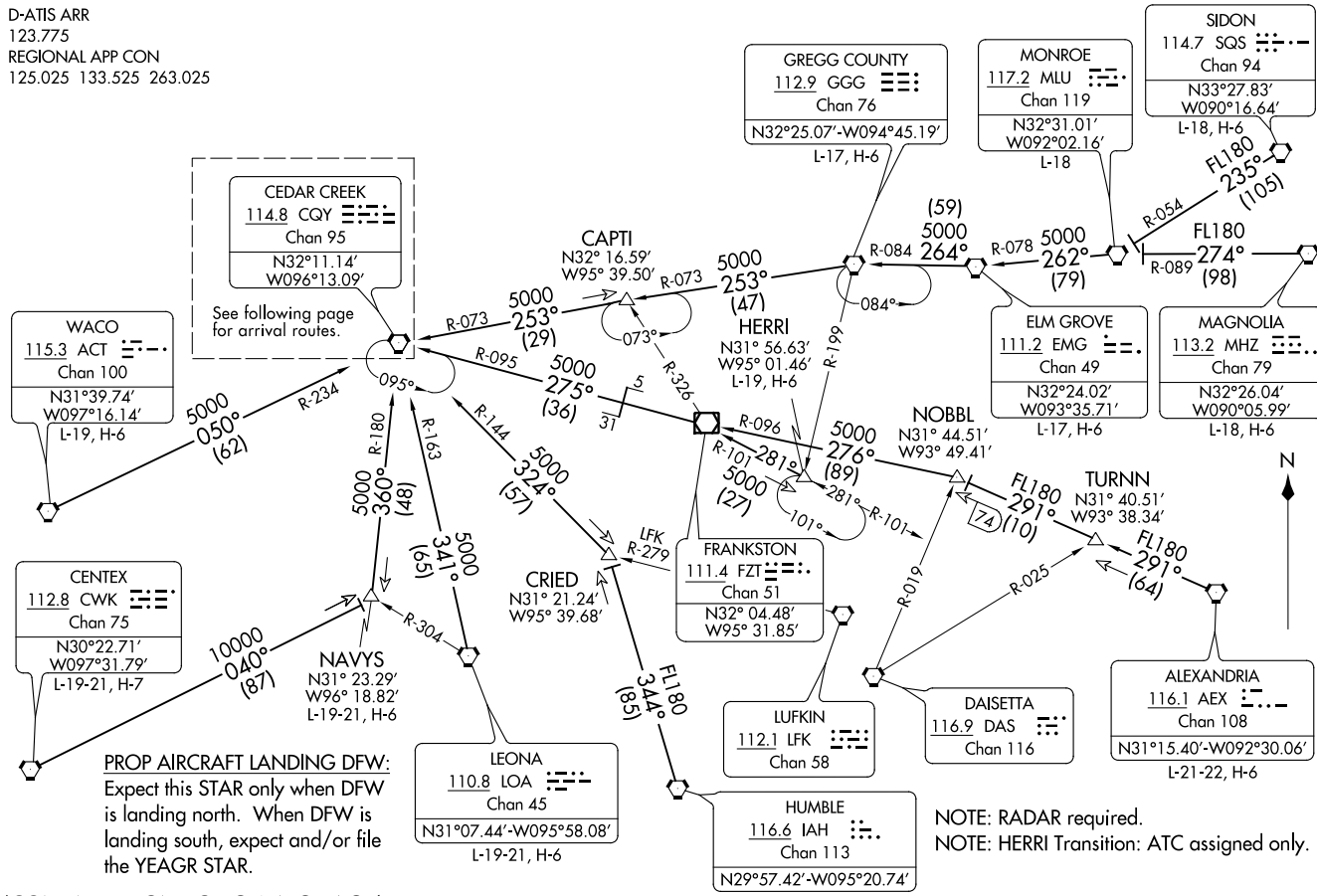


D-ATIS ARR
123.775
REGIONAL APP CON
125.025 133.525 263.025

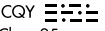


(CONTINUED ON FOLLOWING PAGE)

NOTE: RADAR required.
NOTE: HERRI Transition: ATC assigned only.

NOTE: Chart not to scale.



CEDAR CREEK
114.8 CQY 
Chan 95
N32° 11.14' W96° 13.09'

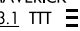
HOWDY
N32° 23.10' - W96° 26.71'
TURBOJETS LANDING NORTH:
Expect 11000 250K
TURBOJETS LANDING SOUTH:
280K

YEAGR
N32° 33.73' W96° 19.90'

PROP AIRCRAFT LANDING DFW:
Expect this STAR only when DFW is landing north. When DFW is landing south, expect and/or file the YEAGR STAR.

NOTE: RADAR Required.

COWBOY
116.2 CVE 
Chan 109

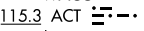
MAVERICK
113.1 TTT 
Chan 78

DIETZ
N32° 47.60' - W96° 54.90'
TURBOJETS LANDING SOUTH:
Expect 11000 220K

WARDZ
N32° 39.50' - W96° 45.70'
TURBOJETS LANDING SOUTH:
Expect 11000 250K

TACKE
N32° 34.00' W96° 39.50'

BELLS
N32° 29.20' W96° 34.00'

WACO
115.3 ACT 
Chan 100

(NARRATIVE ON FOLLOWING PAGE)

D-ATIS ARR
123.775
REGIONAL APP CON
125.025 133.525 263.025

Note: Chart not to scale.

CEDAR CREEK ONE ARRIVAL

ARRIVAL ROUTE DESCRIPTION

ALEXANDRIA TRANSITION (AEX.CQY1): From over AEX VORTAC on AEX R-291 to NOBBL, then on FZT R-096 to FZT VOR/DME, then on FZT R-275 and CQY R-095 to CQY VORTAC. Thence. . . .

CENTEX TRANSITION (CWK.CQY1): From over CWK VORTAC on CKW R-040 to NAVYS, then on CQY R-180 to CQY VORTAC. Thence. . . .

ELM GROVE TRANSITION (EMG.CQY1): From over EMG VORTAC on EMG R-264 and GGG R-084 to GGG VORTAC, then on GGG R-253 and CQY R-073 to CAPTI, then on CQY R-073 to CQY VORTAC. Thence. . . .

GREGG COUNTY TRANSITION (GGG.CQY1): From over GGG VORTAC on GGG R-253 and CQY R-073 to CAPTI, then on CQY R-073 to CQY VORTAC. Thence. . . .

HERRI TRANSITION (HERRI.CQY1): From over HERRI on FZT R-101 to FZT VOR/DME, then on FZT R-275 and CQY R-095 to CQY VORTAC. Thence. . . .

HUMBLE TRANSITION (IAH.CQY1): From over IAH VORTAC on IAH R-344 to CRIED, then on CQY R-144 to CQY VORTAC. Thence. . . .

LEONA TRANSITION (LOA.CQY1): From over LOA VORTAC on LOA R-341 and CQY R-163 to CQY VORTAC. Thence. . . .

MAGNOLIA TRANSITION (MHZ.CQY1): From over MHZ VORTAC on MHZ R-274 and MLU R-089 to MLU VORTAC, then on MLU R-262 and EMG R-078 to EMG VORTAC, then on EMG R-264 and GGG R-084 to GGG VORTAC, then on GGG R-253 and CQY R-073 to CAPTI, then on CQY R-073 to CQY VORTAC. Thence. . . .

MONROE TRANSITION (MLU.CQY1): From over MLU VORTAC on MLU R-262 and EMG R-078 to EMG VORTAC, then on EMG R-264 and GGG R-084 to GGG VORTAC, then on GGG R-253 and CQY R-073 to CAPTI, then on CQY R-073 to CQY VORTAC. Thence. . . .

NAVYS TRANSITION (NAVYS.CQY1): From over NAVYS on CQY R-180 to CQY VORTAC. Thence. . . .

SIDON TRANSITION (SQS.CQY1): From over SQS VORTAC on SQS R-235 and MLU R-054 to MLU VORTAC, then on MLU R-262 and EMG R-078 to EMG VORTAC, then on EMG R-264 and GGG R-084 to GGG VORTAC, then on GGG R-253 and CQY R-073 to CAPTI, then on CQY R-073 to CQY VORTAC. Thence. . . .

WACO TRANSITION (ACT.CQY1): From over ACT VORTAC on ACT R-050 and CQY R-234 to CQY VORTAC. Thence. . . .

From over CQY VORTAC on CQY R-310. Thence. . . .

. . . TURBOJETS LANDING NORTH: To HOWDY. Depart heading 280°, expect RADAR vectors to final.

. . . TURBOJETS LANDING SOUTH: To DIETZ. Depart heading 355°, expect RADAR vectors to final.

. . . PROP AIRCRAFT LANDING NORTH: To TACKE. Expect vectors to final approach course.

SC-2, 07 OCT 2021 to 04 NOV 2021

SC-2, 07 OCT 2021 to 04 NOV 2021