

LOC/DME I-CIX <b>110.55</b> Chan <b>42 (Y)</b>	APP CRS <b>176°</b>	Rwy Idg <b>13401</b> TDZE <b>602</b> Apt Elev <b>606</b>
--	------------------------	--

# CONVERGING ILS RWY 18L

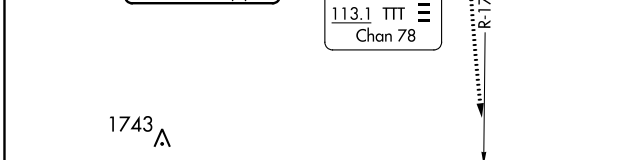
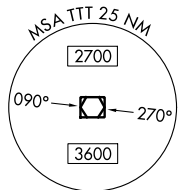
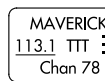
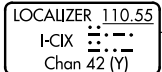
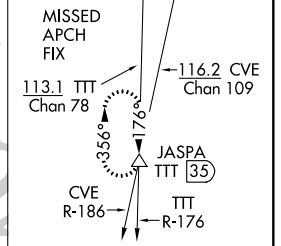
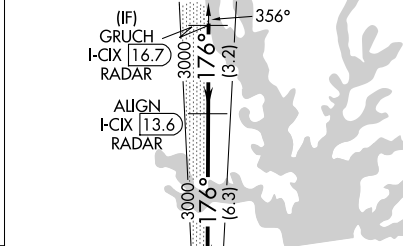
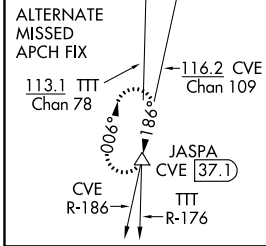
DALLAS-FORT WORTH INTL (DFW)

DME and RADAR required.

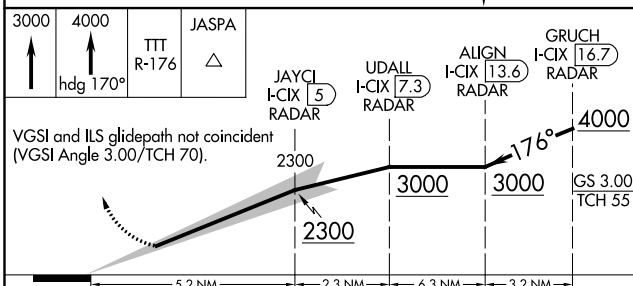
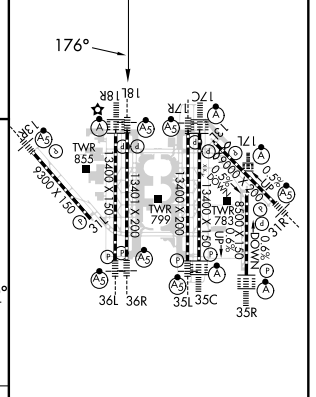
Simultaneous approach authorized with CONVERGING ILS RWY 13R.

MALSRR MISSED APPROACH: Climb to 3000, then climb to 4000 on heading 170° and TTT VOR/DME R-176 to JASPA/TTT 35 DME and hold.

D-ATIS ARR <b>123.775</b> DEP <b>135.925</b>	REGIONAL APP CON <b>118.425</b>	DFW TOWER <b>126.55 127.5</b> EAST <b>124.15 134.9</b> WEST	GND CON <b>121.65 121.8</b> EAST <b>121.85</b> WEST	CLNC DEL <b>128.25</b>	CPDLC
--	------------------------------------	---	---	---------------------------	-------



ELEV 606	<b>D</b> TDZE 602
----------	-------------------



CATEGORY	A	B	C	D
S-ILS 18L	802/18	200 (200-1/2)		

HIRL all Rwy's  
REIL Rwy's 13L and 31L  
TDZ/CL all Rwy's except 13L and 31L

SC-2, 07 OCT 2021 to 04 NOV 2021

SC-2, 07 OCT 2021 to 04 NOV 2021