

LOC/DME I-VYVY <b>111.9</b> Chan <b>56</b>	APP CRS <b>176°</b>	Rwy Idg <b>13400</b> TDZE <b>607</b> Apt Elev <b>607</b>
--	------------------------	--

# CONVERGING ILS RWY 18R

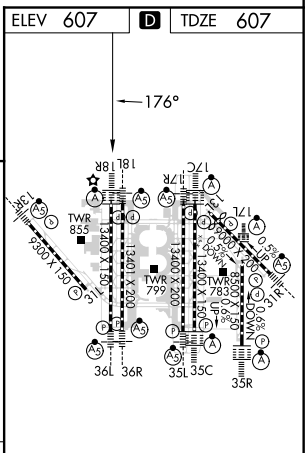
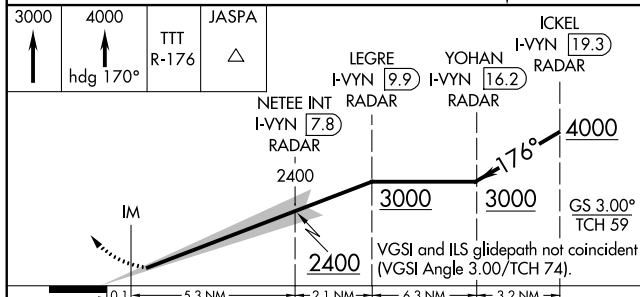
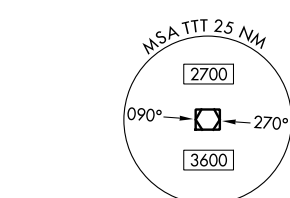
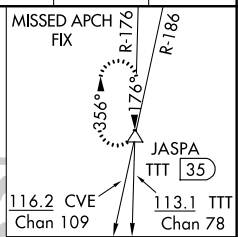
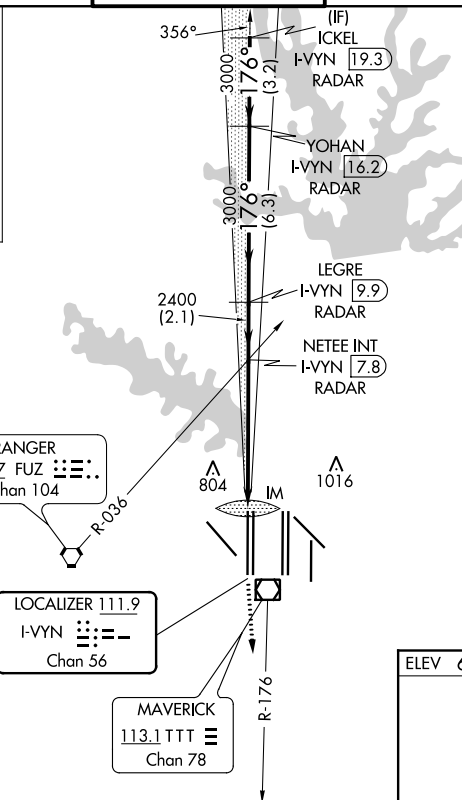
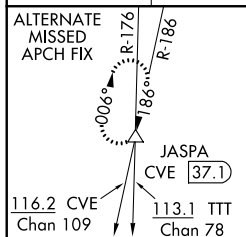
DALLAS-FORT WORTH INTL (DFW)

DME and RADAR required.

Simultaneous approach authorized with CONVERGING ILS RWY 13R, CONVERGING ILS RWY 17C, and CONVERGING ILS 17R.

ALSF-2 MISSED APPROACH: Climb to 3000 then climb to 4000 on heading 170° and TTT VOR/DME R-176 to JASPA/TTT 35 DME and hold.

D-ATIS ARR <b>123.775</b> DEP <b>135.925</b>	REGIONAL APP CON <b>118.425</b>	DFW TOWER <b>126.55 127.5 EAST</b> <b>124.15 134.9 WEST</b>	GND CON <b>121.65 121.8 EAST</b> <b>121.85 WEST</b>	CLNC DEL <b>128.25</b>	CPDLC
--	------------------------------------	---	---	---------------------------	-------



CATEGORY	A	B	C	D
S-ILS 18R	807/18 200 (200-1/2)			

HIRL all Rwys  
REIL Rwy 13L and 31L  
TDZ/CL all Rwys except 13L and 31L

# CONVERGING ILS RWY 18R

SC-2, 07 OCT 2021 to 04 NOV 2021

SC-2, 07 OCT 2021 to 04 NOV 2021