

LOC/DME I-PKQ <b>110.3</b> Chan 40	APP CRS <b>356°</b>	Rwy Idg TDZE Apt Elev	<b>13400</b> <b>563</b> <b>607</b>
------------------------------------------	------------------------	-----------------------------	------------------------------------------

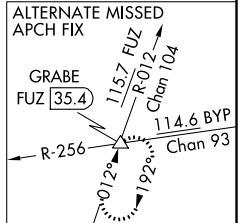
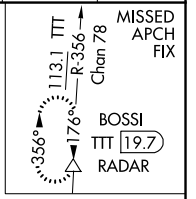
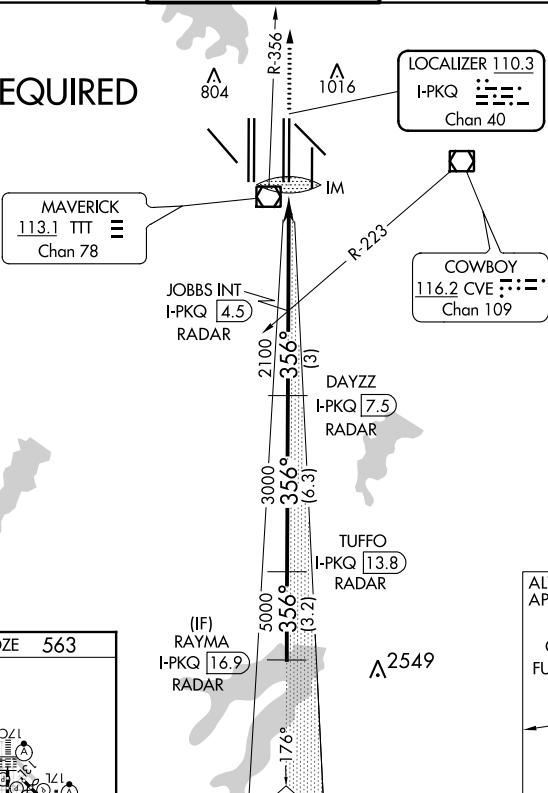
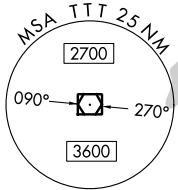
# CONVERGING ILS RWY 35C

DALLAS-FORT WORTH INTL (DFW)

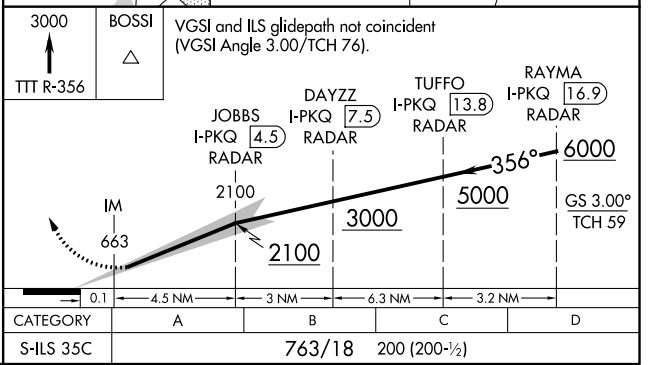
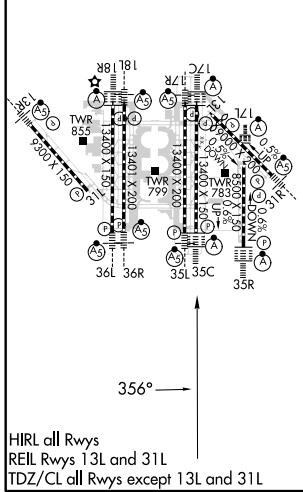
<p>DME or RADAR required. Simultaneous approach authorized with Converging ILS Rwy 31R.</p>	<b>DFW TOWER</b> <b>126.55 127.5 EAST</b> <b>124.15 134.9 WEST</b>	
	<b>D-ATIS</b> ARR <b>123.775</b> DEP <b>135.925</b>	<b>REGIONAL APP CON</b> <b>127.075</b>

<b>ALSF-2</b> 	<b>MISSED APPROACH:</b> Climb to 3000 on TTT VOR/DME R-356 to BOSSI/TTT 19.7 DME/RADAR and hold.
<b>GND CON</b> <b>121.65 121.8 EAST</b> <b>121.85 WEST</b>	<b>CLNC DEL</b> <b>128.25</b>

## RADAR REQUIRED



ELEV 607		TDZE 563
----------	--	----------



SC-2, 07 OCT 2021 to 04 NOV 2021

SC-2, 07 OCT 2021 to 04 NOV 2021