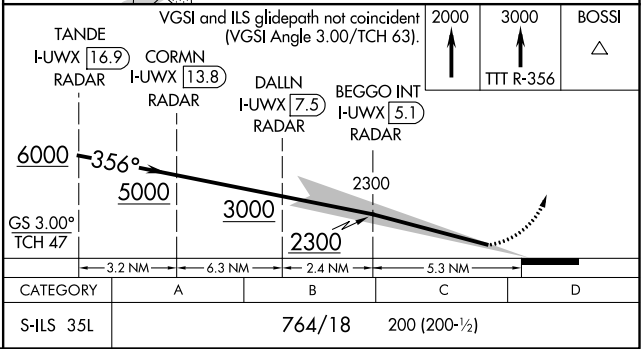
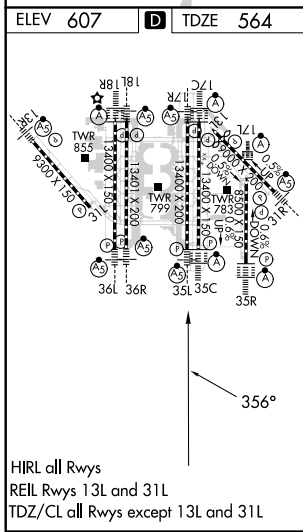
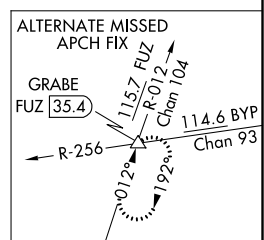
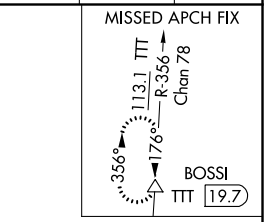
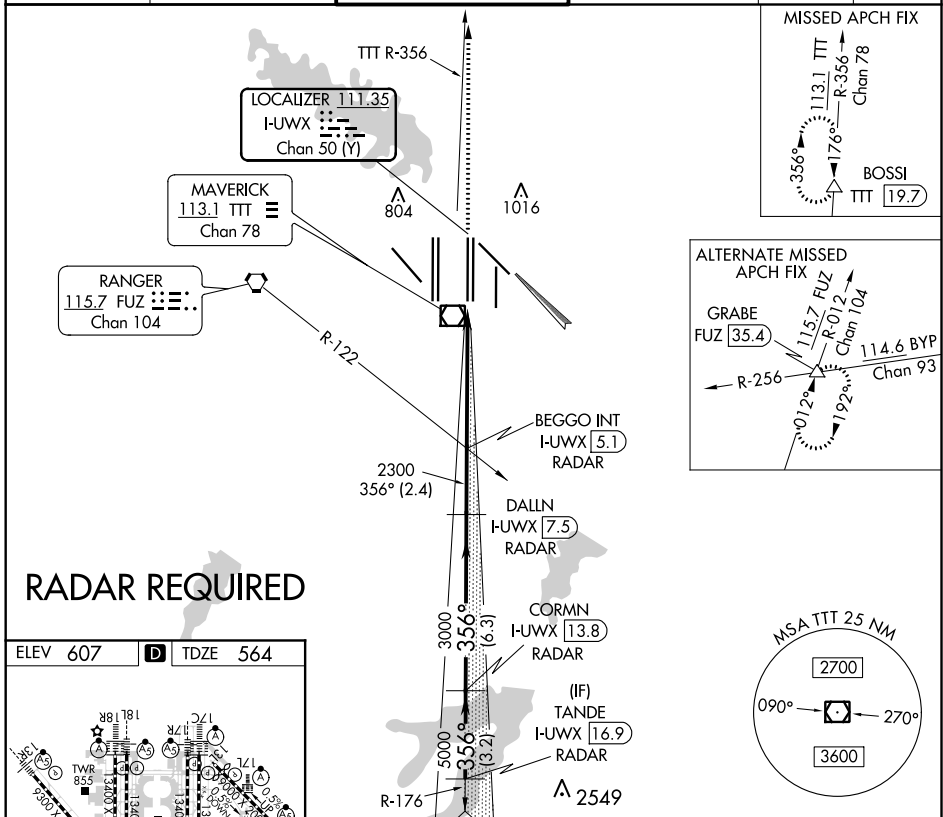


LOC/DME I-UWX <b>111.35</b> Chan <b>50 (Y)</b>	APP CRS <b>356°</b>	Rwy Idg <b>13400</b> TDZE <b>564</b> Apt Elev <b>607</b>
--	------------------------	--

# CONVERGING ILS RWY 35L

DALLAS-FORT WORTH INTL (DFW)

▼ DME or RADAR required. Simultaneous approach authorized with Converging ILS Rwy 31R.	MALSR 	MISSED APPROACH: Climb to 2000 then climb to 3000 on TTT VOR/DME R-356 to BOSSI/TTT 19.7 DME/RADAR and hold.	
		D-ATIS ARR <b>123.775</b> DEP <b>135.925</b>	REGIONAL APP CON <b>127.075</b>
CLNC DEL <b>128.25</b>	CPDLC		



SC-2, 07 OCT 2021 to 04 NOV 2021

SC-2, 07 OCT 2021 to 04 NOV 2021