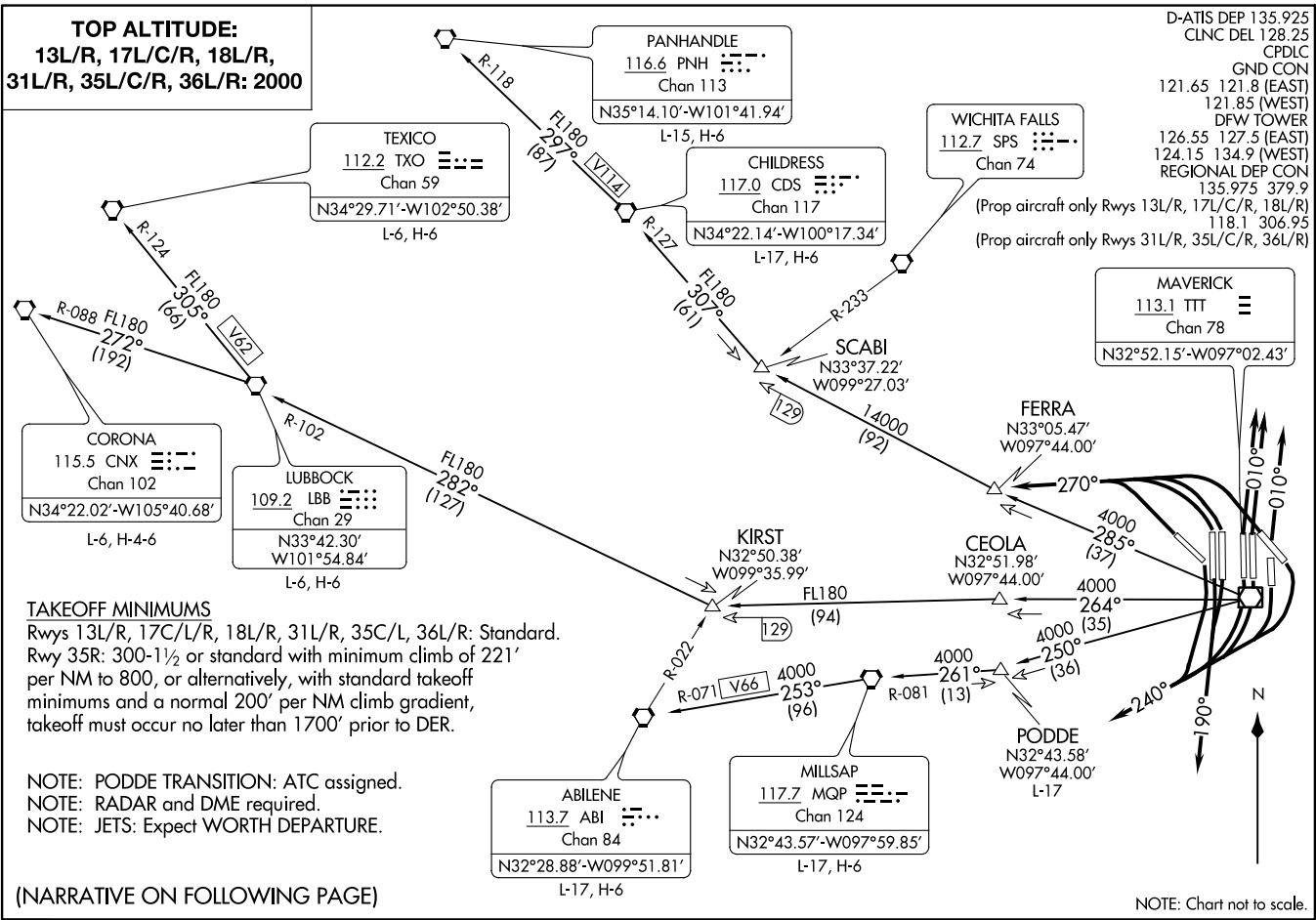


COYOTE TWO DEPARTURE
(CYOTE2.TTT) 21MAY20

DALLAS-FORT WORTH, TEXAS
DALLAS-FORT WORTH INTL (DFW)



(CYOTE2.TTT) 20142
COYOTE TWO DEPARTURE

AL-6039 (FAA)

DALLAS-FORT WORTH INTL (DFW)
DALLAS-FORT WORTH, TEXAS

COYOTE TWO DEPARTURE



DEPARTURE ROUTE DESCRIPTION

TAKEOFF RUNWAYS 13L/R, 17C/L/R: Climb on heading 240° for vectors to appropriate route, thence. . . .

TAKEOFF RUNWAYS 18L/R: Climb on heading 190° for vectors to appropriate route, thence. . . .

TAKEOFF RUNWAYS 31L/R, 36L/R: Climb on heading 270° for vectors to appropriate route, thence. . . .

TAKEOFF RUNWAYS 35C/L/R: Climb on heading 010° for vectors to appropriate route, thence. . . .

. . . .maintain 2000 and expect filed altitude 10 minutes after departure.

ABILENE TRANSITION (CYOTE2.ABI): From over TTT VOR/DME on TTT R-250 to PODDE, then on MQP R-081 to MQP VORTAC, then on MQP R-253 and ABI R-071 to ABI VORTAC.

CHILDRESS TRANSITION (CYOTE2.CDS): From over TTT VOR/DME on TTT R-285 to SCABI, then on CDS R-127 to CDS VORTAC.

CORONA TRANSITION (CYOTE2.CNX): From over TTT VOR/DME on TTT R-264 to KIRST, then on LBB R-102 to LBB VORTAC, then on LBB R-272 and CNX R-088 to CNX VORTAC.

LUBBOCK TRANSITION (CYOTE2.LBB): From over TTT VOR/DME on TTT R-264 to KIRST, then on LBB R-102 to LBB VORTAC.

MILLSAP TRANSITION (CYOTE2.MQP): From over TTT VOR/DME on TTT R-250 to PODDE, then on MQP R-081 to MQP VORTAC.

PANHANDLE TRANSITION (CYOTE2.PNH): From over TTT VOR/DME on TTT R-285 to SCABI, then on CDS R-127 to CDS VORTAC, then on CDS R-297 and PNH R-118 to PNH VORTAC.

PODDE TRANSITION (CYOTE2.PODDE): From over TTT VOR/DME on TTT R-250 to PODDE.

TEXICO TRANSITION (CYOTE2.TXO): From over TTT VOR/DME on TTT R-264 to KIRST, then on LBB R-102 to LBB VORTAC, then on LBB R-305 and TXO R-124 to TXO VORTAC.

SC-2, 07 OCT 2021 to 04 NOV 2021

SC-2, 07 OCT 2021 to 04 NOV 2021

COYOTE TWO DEPARTURE