

DALLAS EIGHT DEPARTURE (DALL8 TTT) 17JUN21 DALLAS-FORT WORTH INTL (DFW) DALLAS-FORT WORTH, TEXAS

D-ATIS DEP 135.925
CLNC DEL 128.25
CPDIC
GND CON
121.65 121.8 (EAST)
121.85 (WEST)
DFW TOWER
126.55 127.5 (EAST)
124.15 134.9 (WEST)
REGIONAL DEP CON
118.55 290.35

TOP ALTITUDE:
Rwys 13 L/R, 17 L/C/R, 18 L/R,
35 L/C/R, 36 L/R: 10000
Rwys 31 L/R: 5000

TAKEOFF MINIMUMS
Rwys 13L/R, 17L/C/R, 18L/R,
31L/R, 35L/C, 36L/R: Standard.
Rwy 35R: Standard with minimum
climb of 240' per NM to 1200.

LITTLE ROCK
113.9 UT
Chan 86
N34°40.66'-W92°10.83'
L-18, H-6

TEXARKANA
116.3 TXK
Chan 110
N33°30.83'-W94°04.39'
L-17, H-6

SULPHUR SPRINGS
109.0 SLR
Chan 27

BONHAM
114.6 BYP
Chan 93

COBUG
N33°17.38'
W95°37.68'

NOBLY
N33°04.94'
W96°19.96'

TRISS
N32°58.20'
W96°19.94'

SHERO
N33°04.49'
W95°33.78'

SOLDO
N32°51.92'
W96°19.94'
L-17

SHRLY
N32°44.60'
W94°18.17'

BELCHER
117.4 EIC
Chan 121
N32°46.28'-W93°48.60'
L-17, H-6

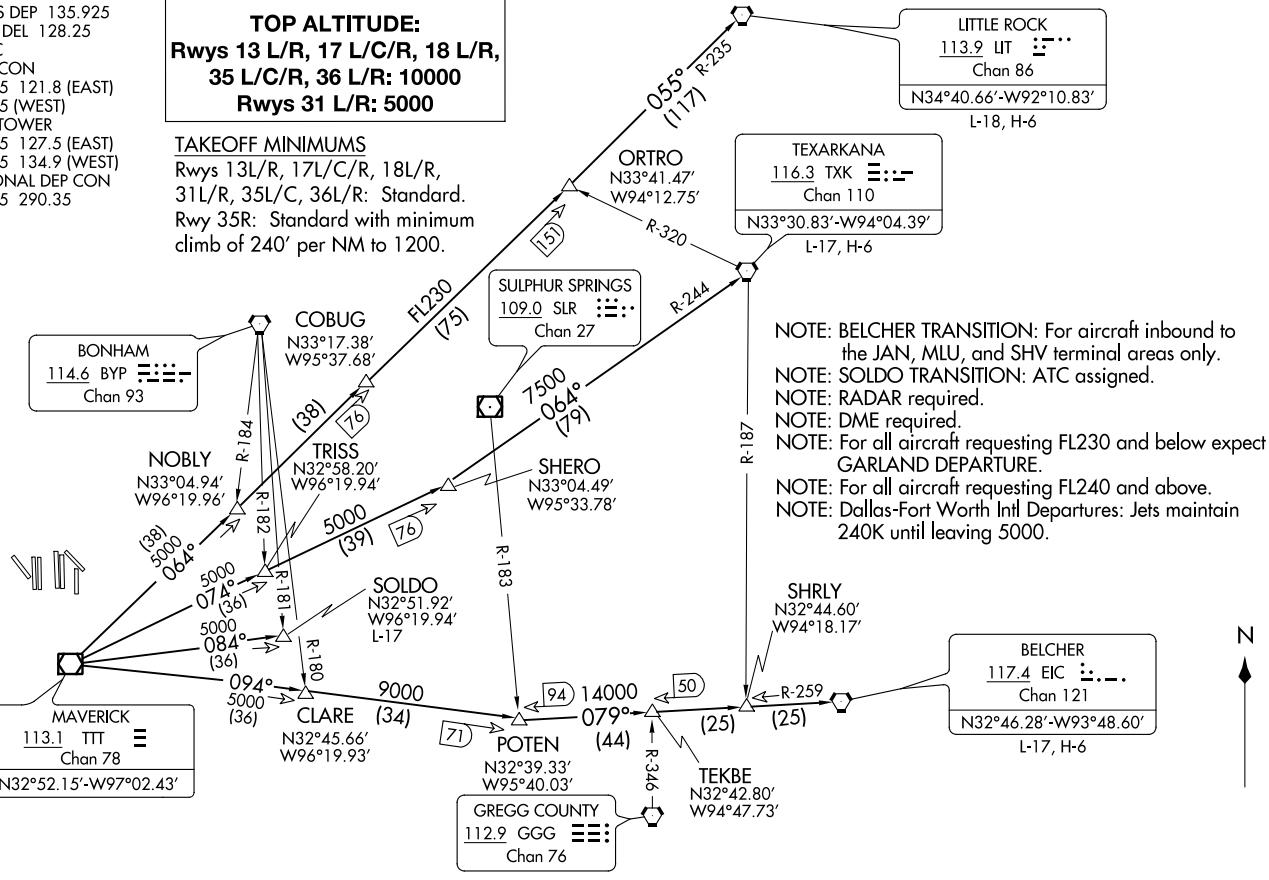
MAVERICK
113.1 TTT
Chan 78
N32°52.15'-W97°02.43'

CLARE
N32°45.66'
W96°19.93'

GREGG COUNTY
112.9 GGG
Chan 76

TEKBE
N32°42.80'
W94°47.73'

POTEN
N32°39.33'
W95°40.03'



(DALL8 TTT) 21168 DALLAS EIGHT DEPARTURE AL-6039 (FAA) DALLAS-FORT WORTH INTL (DFW) DALLAS-FORT WORTH, TEXAS

(NARRATIVE ON FOLLOWING PAGE)

NOTE: Chart not to scale.

DALLAS EIGHT DEPARTURE



DEPARTURE ROUTE DESCRIPTION

TAKEOFF RUNWAYS 13L/R, 17L/C/R, 18L/R, 35L/C/R, 36L/R: Climb on assigned heading, maintain 10000 thence. . . .

TAKEOFF RUNWAYS 31L/R: Climb on assigned heading, maintain 5000 thence. . . .

. . . .on vectors to appropriate route, unless otherwise advised maintain assigned altitude and expect filed altitude 10 minutes after departure.

BELCHER TRANSITION (DALL8.EIC): From over TTT VOR/DME on TTT R-094 to POTEN, then on EIC R-259 to EIC VORTAC.

LITTLE ROCK TRANSITION (DALL8.LIT): From over TTT VOR/DME on TTT R-064 to ORTRO, then on LIT R-235 to LIT VORTAC.

SOLDO TRANSITION (DALL8.SOLDO): From over TTT VOR/DME on TTT R-084 to SOLDO.

TEXARKANA TRANSITION (DALL8.TXK): From over TTT VOR/DME on TTT R-074 to SHERO, then on TXK R-244 to TXK VORTAC.

SC-2, 07 OCT 2021 to 04 NOV 2021

SC-2, 07 OCT 2021 to 04 NOV 2021

DALLAS EIGHT DEPARTURE