

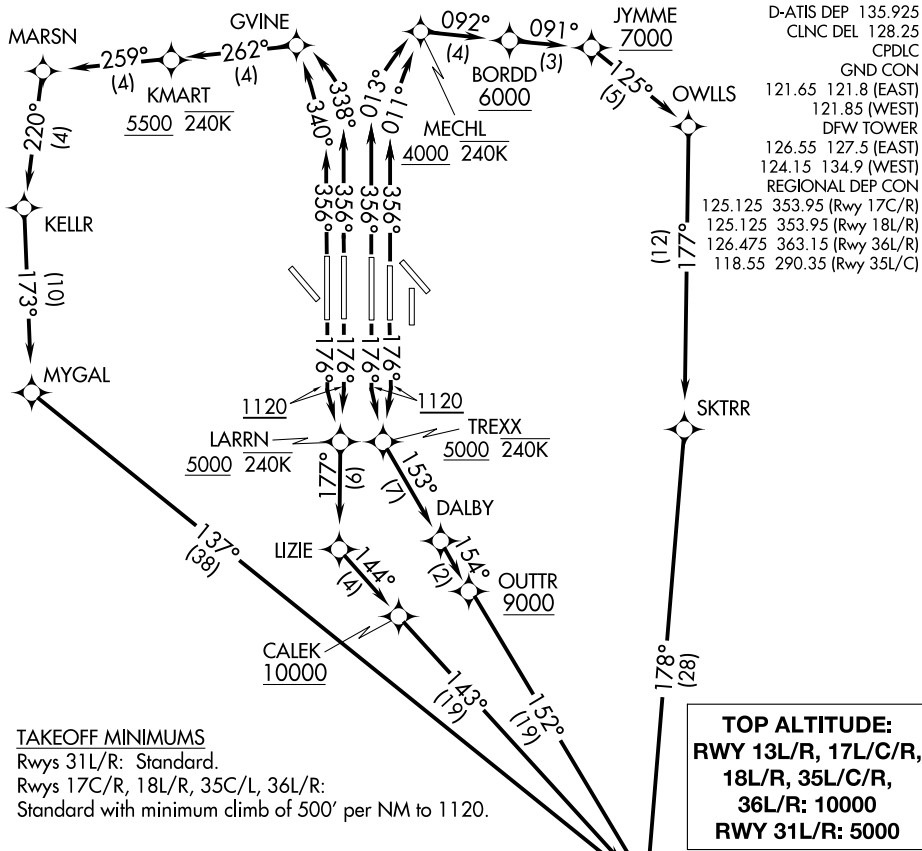
(DARTZ8.DARTZ) 19283

AL-6039 (FAA)

DALLAS-FORT WORTH INTL (DFW)

DARTZ EIGHT DEPARTURE (RNAV)

DALLAS-FORT WORTH, TEXAS



TAKEOFF MINIMUMS

Rwys 31L/R: Standard.
 Rwys 17C/R, 18L/R, 35C/L, 36L/R:
 Standard with minimum climb of 500' per NM to 1120.

TOP ALTITUDE:
RWY 13L/R, 17L/C/R,
18L/R, 35L/C/R,
36L/R: 10000
RWY 31L/R: 5000

NOTE: BILEE TRANSITION: For aircraft overlying BILEE intersection on J87 to overfly TNV VOR/DME.

NOTE: TORNN TRANSITION: For aircraft overlying TORNN intersection, then on the appropriate RNAV STAR to George Bush Intercontinental, Lone Star Executive, or David Wayne Hooks Memorial airports. Also for aircraft landing in the Lafayette, Lake Charles, or Beaumont/Port Arthur terminal areas.

NOTE: DME/DME/IRU or GPS required.

NOTE: RNAV 1.

NOTE: For use by turbo-jets only.

NOTE: RADAR required.

NOTE: Chart not to scale.

(NARRATIVE ON FOLLOWING PAGE)

DARTZ EIGHT DEPARTURE (RNAV)

(DARTZ8.DARTZ) 10OCT19

DALLAS-FORT WORTH, TEXAS

DALLAS-FORT WORTH INTL (DFW)

SC-2, 07 OCT 2021 to 04 NOV 2021

SC-2, 07 OCT 2021 to 04 NOV 2021

DARTZ EIGHT DEPARTURE (RNAV)



DEPARTURE ROUTE DESCRIPTION

TAKEOFF RUNWAYS 17C/R: Climb on heading 176° to 1120, then direct TREXX, cross TREXX at or above 5000 and at or below 240K, then on track 153° to DALBY, then on track 154° to cross OUTTR at or above 9000, then on depicted route to DARTZ, thence. . . .

TAKEOFF RUNWAYS 18L/R: Climb on heading 176° to 1120, then direct LARRN, cross LARRN at or above 5000 and at or below 240K, then on track 177° to LIZIE, then on track 144° to cross CALEK at or above 10000, then on depicted route to DARTZ, thence. . . .

TAKEOFF RUNWAY 35C: Climb on heading 356° to intercept course 011° to cross MECHL at or above 4000 and at or below 240K, then on track 092° to cross BORDD at or above 6000, then on track 091° to cross JYMME at or above 7000, then on depicted route to DARTZ, thence. . . .

TAKEOFF RUNWAY 35L: Climb on heading 356° to intercept course 013° to cross MECHL at or above 4000 and at or below 240K, then on track 092° to cross BORDD at or above 6000, then on track 091° to cross JYMME at or above 7000, then on depicted route to DARTZ, thence. . . .

TAKEOFF RUNWAY 36L: Climb on heading 356° to intercept course 340° to GVINE, then on course 262° to cross KMART at or above 5500 and at or below 240K, then on depicted route to DARTZ, thence. . . .

TAKEOFF RUNWAY 36R: Climb on heading 356° to intercept course 338° to GVINE, then on course 262° to cross KMART at or above 5500 and at or below 240K, then on depicted route to DARTZ, thence. . . .

TAKEOFF RUNWAYS 31L/R: Climb on heading assigned by ATC, for RADAR vectors to DARTZ, maintain 5000, expect filed altitude ten minutes after departure.

. . . .(transition) Maintain 10000, expect filed altitude ten minutes after departure.

BILEE TRANSITION (DARTZ8.BILEE):

NAVASOTA TRANSITION (DARTZ8.TNV):

TORNN TRANSITION (DARTZ8.TORNN):

SC-2, 07 OCT 2021 to 04 NOV 2021

SC-2, 07 OCT 2021 to 04 NOV 2021